



1948  
*Parda*













*The Darda,* 1948 Year Book . . .  
*Trevecca* Nazarene College  
*Nashville,* Tennessee

*Commemorating*

TREVECCA'S

47<sup>th</sup>  
YEAR OF  
PROGRESS

Briefly here we pause and linger—

This spot is only now our resting place;

Our stay on its cool sands will not be long.

Progress is the onward stride of God—

Forth we have come from low, not mean, estate;

Onward we fare to heights we dimly see.

The past we fondly view with deep thanksgiving;

God's future beckons on to firm thanks-living.









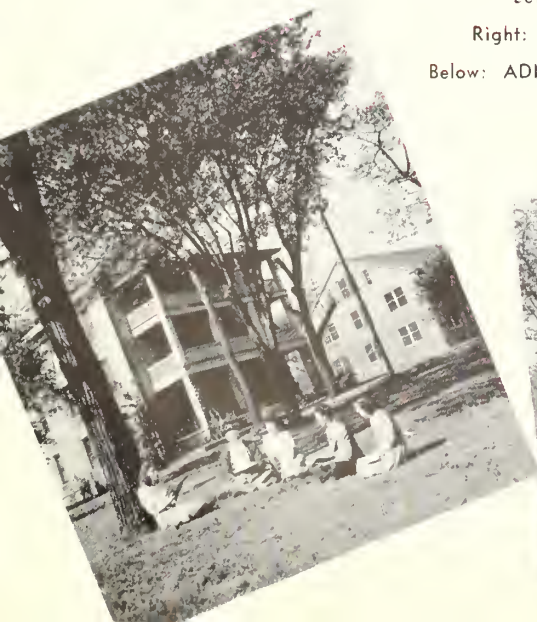
# SERVING THE *Southeastern Educational Zone*

*We* hail from the wide and sandy plains that fringe the blue Atlantic and the Gulf of Mexico; we were nurtured in ethereal air that floats atop the crisp Blue Ridge and the Cumberland Plateau; yes, home to us is a place high or low where the blue grass waves or where ferns and mountain laurel grow; and we've come to learn and we learn to serve, and the great Southeast is our parish-chancel as forward, forth we go.

Left: HARDY HALL

Right: McKAY DORMITORY

Below: ADMINISTRATION BUILDING







*Our Chief Purpose is to*  
**GIRDLE THE GLOBE**

*H*ere we daily tread the paths of learning—  
we work, play and study, we sing, pray, love and  
worship. Sometimes we look upon the world outside  
—we see that it is large, cold and sinful, that it has  
strife and chaos. Then we resolve to work as hard  
as the world is vast, to play and give our warmth for  
its coldness, to study that knowledge of the truth may  
drive out sin, to increase our songs, prayers, love and  
worship to give for strife and chaos God's love, mercy  
and salvation—around the world.







**NESS UNTO THE LORD**

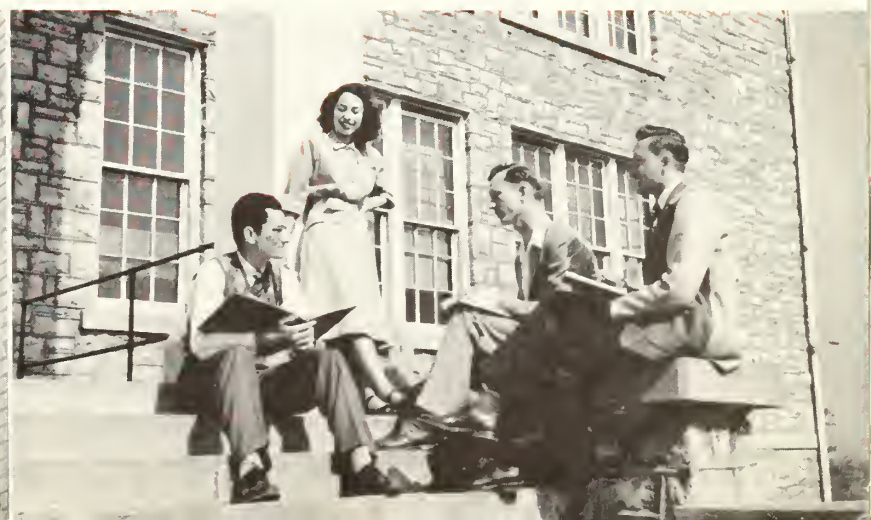
# 500 *Students To Promote* **THE KINGDOM**



We add our numbers, our prayers, and our faith, on each Lord's day, to sixteen Nashville churches; we sing and pray and testify, on a regular weekly schedule, in hospitals, jails, workhouses, and homes; we furnish student pastors for a score of churches, far and near; we take the story of the Christ who saves, in song and sermon and praise, week by week, to thousands on the streets and over the air. 500 students promote the Kingdom.











THE BRACKENS



*Their Noble Lives Have*  
**BROADENED OUR VISION**

They came to us from Bethany Peniel. They brought to us lives rich with the experience of years. They've given to us the lessons of those years. Lessons that Time alone knows how to teach. Lessons of love, of courage, of cooperation, of steadfastness. Lessons that the lexicon of life has taught them.

They see the student's viewpoint of things, too; (for were they not students themselves once?) and with a sensible, sympathetic guidance they lead them in the plain paths. They encourage the discouraged, cheer up the homesick, and straighten out theologies.

We thank you for these things and admire you for your accomplishments. To you, Dr. and Mrs. Bracken, we dedicate the 1948 DARDA.



## *Alma Mater*

On a hill stands old Trevecca, lined against the sky,  
Standing proud a Christian college, as the years go by.  
We will honor and we'll love her,  
We will stand for right,  
Always carry high her banner,  
Hail to the Purple and the White.  
Fellow students, let us honor her,  
May we always be,  
Sons and daughters she'll be proud of,  
Dear old T. N. C.

• • • • *Him We Serve at*



# *Ready To Do His Bidding*



I'll go where you want me to go,  
dear Lord,

Over mountain, or plain, or sea;

I'll say what you want me to say,  
dear Lord,

I'll be what you want me to be.



# T R E V E C C A

**A. B. MACKEY**





# PRESIDENT MACKEY SPEAKS . . .

The value of Trevecca College is equal to the value of the contribution which it makes to the lives of its students. The contribution which it makes is primarily dependent upon the type of student which attends. If our students have had a poor background for their college work, or if they have low intelligence, or if they fail to study while at the college, Trevecca will be considered a poor investment for the church. However, on the other hand, if the students who attend Trevecca College have been good students, have high intelligence and are industrious students while at Trevecca, the membership of our church will feel that what money they put into Trevecca College was well spent. Those who work in the vineyard of the Lord should be of the highest quality in every way and I hope that Trevecca College, its faculty and its students will be such as to attract the best. Some have had the impression that a holiness college should accept those students who might not pass their courses somewhere else. I hope that we can change that impression to the extent



The President and Wife at Home

that only the best can expect to enter our college and only those who do their best will be allowed to stay. We do not have room for the student who only wants to get by, but we want students who are wholly consecrated to God and who have an ambition to acquire an education equal to that of the best in the world and who are willing to work and have the courage to stay with the job until the goal is reached.

The President's Home



# WE CAME . . . FROM NORTH, EAST, SOUTH AND WEST



Fancy Meeting You Here!

Student-Faculty Reception on the President's Lawn







The Administration Building—



The Bookkeeper Takes Our Money

The Registrar Keeps Our Records



After We Stood In Line





# WE STUDIED



May I Look, Too?



Faye and Brock



A Studios

The McClurkan Memorial Hall







In the Lab

Ruth in the Library



Math Class

At Work in the Library

All Classes Are Interesting ? ? ?

Don't Forget to Return That Book





# WE WORKED



Don Fires Dr. Gresham's Furnace



"Dot" Prepares A Meal

The Books in the Library Are Catalogued







The Shelves in the Stacks Are Fixed



Dr. Mackey's Secretary

Men's Dormitory



Rosa—The School Barber



# WE MADE FRIENDS



We Studied Together



A Friendly Chat

The Women's Dormitory







Where All the "Gang" Meets

The Student Body Remembers A Dear Friend





# WE WORSHIPPED



CHAPEL EACH DAY WITH THE ENTIRE



★ ★ ★



S T U D E N T     B O D Y



Dr. John R. Church Speaks

Rev. L. B. Hicks Speaks











# WE GRADUATED

It doesn't seem too long ago when we unpacked our trunks for our first year at Trevecca. We readily tried to adjust ourselves, made friends, and became a part of a great institution. We have studied, we have worked, we have made friends, we have worshiped, and now we come to our graduation day. Many have been the lessons we have learned, the heartaches we have borne, and the joys we have shared. We have had our misunderstandings, our ups and downs, but now we suddenly come to the realization that we are ready to part and start in the vast field of life. As we go, we do so with a feeling of sadness, because of our parting, yet we go with a challenge to fill our place in the world, and meet a need. We are graduating but we take with us a spirit, an inspiration, a prayer to do our best for God and our Alma Mater.









A D M I N I S T R A T I O N



A. B. MACKEY  
M.A., LL.D.  
President, Psychology, Economics



L. P. GRESHAM  
M.A., Ph.D.  
Dean of College, History

Wayne and Lillian Raise the Flag







A. K. BRACKEN  
M.A., D.D.  
Dean of Religion, Theology, Philosophy



M. E. REDFORD  
M.A., B.D.  
Biblical Language



AMY L. PERSON  
M.A.  
Registrar, English, Bible



LILA THRASHER MACKEY  
M.A., B.S. in L.S.  
Librarian, Library Science, Modern  
Language



SADIE AGNEW JOHNSON  
M.A.  
Mathematics, Theology

# FACULTY



J. D. IRWIN  
M.A.  
Music Theory, Voice, Director of  
Choral Music



MARTHA DEWITT GRESHAM  
M.A.  
Biological Science



MATTIE E. BRACKEN  
M.A.  
Education, Biological Science,  
Psychology



W. M. GREATHOUSE  
A.B., Th.B.  
Theology



H. H. WISE  
Bible, Pastoral Theology



D. H. SPENCER  
A.B.  
High School Principal, Dean of Men



RUTH HARRIS BENNETT  
B.Mus.  
Piano, Voice

# FACULTY



ALTA LINDSAY REDFORD  
M.A.  
High School



MYRTLE V. HOOPER  
M.A.  
Speech



H. F. HAMMOND  
B.S.  
Music Theory, Voice, Piano



Lillian and June  
Answering Prospective  
Student Letters.



## COMMITTEES

### ADMINISTRATION

Dr. Mackey, Chairman, Dr. Bracken, Vice-Chairman, Dr. Gresham, Miss Person, Mrs. Bracken, Mr. Spencer.

### BUILDINGS AND GROUNDS

Mr. Richardson, Chairman, Mrs. Shelton, Mr. Redford, Mrs. Gresham.

### CALENDAR AND PROGRAMS

Mrs. Bennett, Chairman, Mr. Hammond, Vice-Chairman, Miss Hooper, Miss Person.

### FACULTY ACTIVITIES

Mrs. Gresham, Chairman, Miss Paschall, Mrs. Redford, Mr. Irwin.

### ORGANIZATIONS

Dr. Gresham, Chairman, Mrs. Mackey, Mrs. Bracken, Miss Paschall.

### PUBLICITY AND PUBLICATIONS

Miss Person, Chairman, Mrs. Mackey, Mr. Richardson, Dr. Gresham.

### RELIGIOUS LIFE

Dr. Bracken, Chairman, Mr. Redford, Mr. Greathouse, Mrs. Johnson.

### SOCIAL LIFE AND DISCIPLINE

Deans of Men and Women, Chairmen, Dr. Gresham, Dr. Bracken.



FERNE DOGGETT SHELTON  
B.S.  
Bible, Art, High School



EVERETT G. LIMERON  
High School Commercial



MADELYN F. PASCHALL  
M.A.  
Music Theory, Piano, High School



DORIS FORBES  
Nurse



V. NEIL RICHARDSON  
A.B., Th.B.  
Business Manager



EMMA BEAUGARD MURPHY  
Dean of Women

# FACULTY



MARGARET DOGGETT COOK  
Piano, Music Theory



ELIZABETH THOMPSON SPRUILL  
Principal of Demonstration School



FLORENCE EDEN MORRIS  
Violin





Dr. Strang Gives '47  
Baccalaureate Address



MRS. SCOTT HOWARD  
Dietician



C. T. DUCKETT  
M.A.  
English



CLARA BOHLER  
Bookkeeper



*Introducing . . .*

---

**COLLEGE**

---







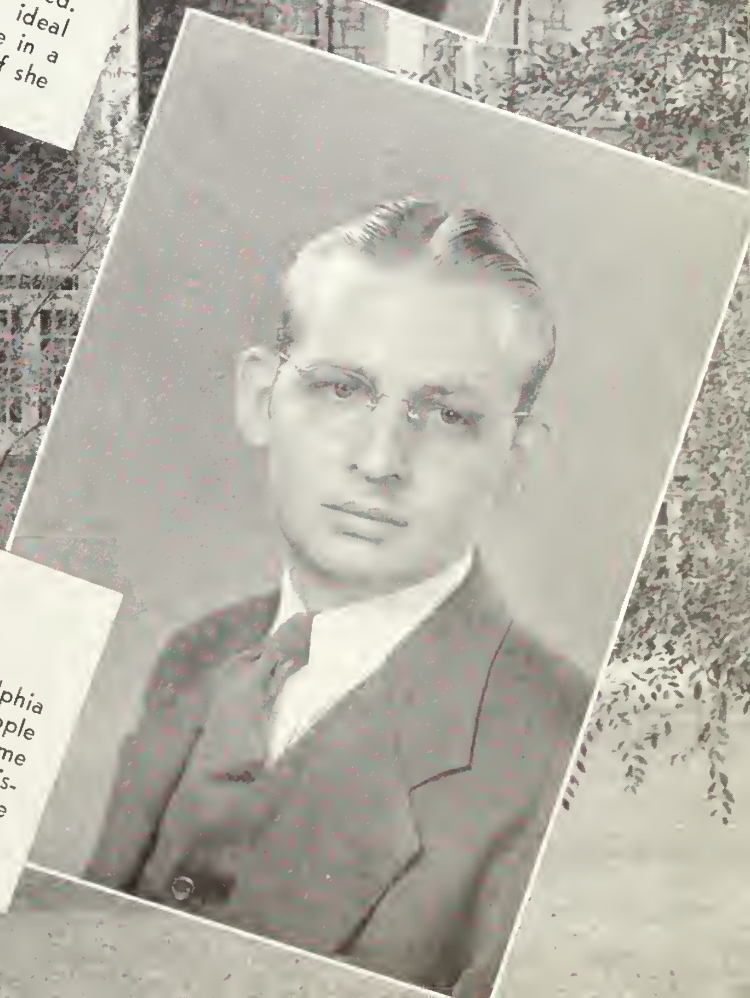






**RUBY BLACKBURN**  
A.B. Math.

The girl who keeps our billfolds empty (checks our food). Quiet disposition and level-headed. Always ready to help—neat and an ideal christian worker. Seems at times to be in a struggle, but we think she will succeed if she gets "Tuggle."



**PAUL BLACKMON**  
A.B. History

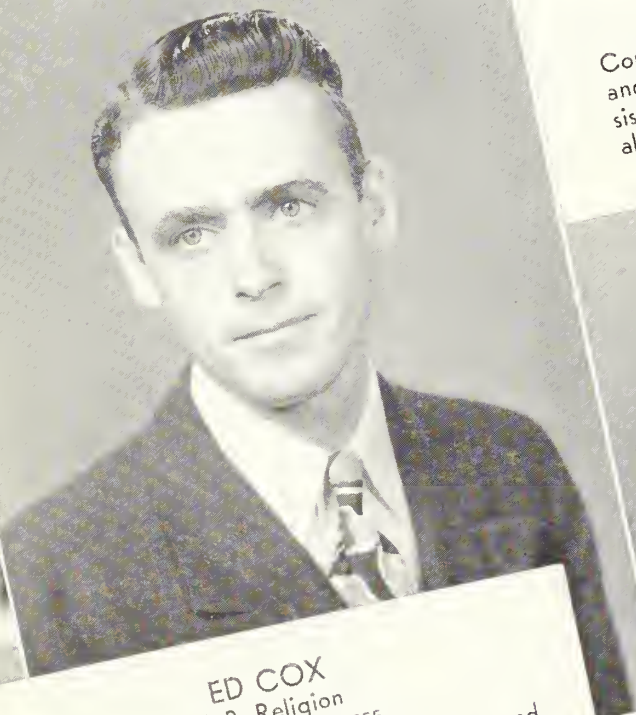
Dry wit; slow smile . . . look of a Philadelphia lawyer . . . doesn't understand why people don't enjoy history. hopes to teach it some day . . . Dr. Gresham's assistant . . . dis-appointed thirteen times in love, but made it the fourteenth time . . . preaches what he practices and practices what he preaches.





**JOHN CHAMBERS**  
A.B. Religion  
PRINCETON, FLA.

The man with the black Ford coupe—Has a laugh for everyone. Dependable, willing to help—lives for others;—His life has proven him to be a perfect gentleman. Incidentally, he is well-rounded.



**ED COX**  
A.B. Religion  
NASHVILLE, TENNESSEE

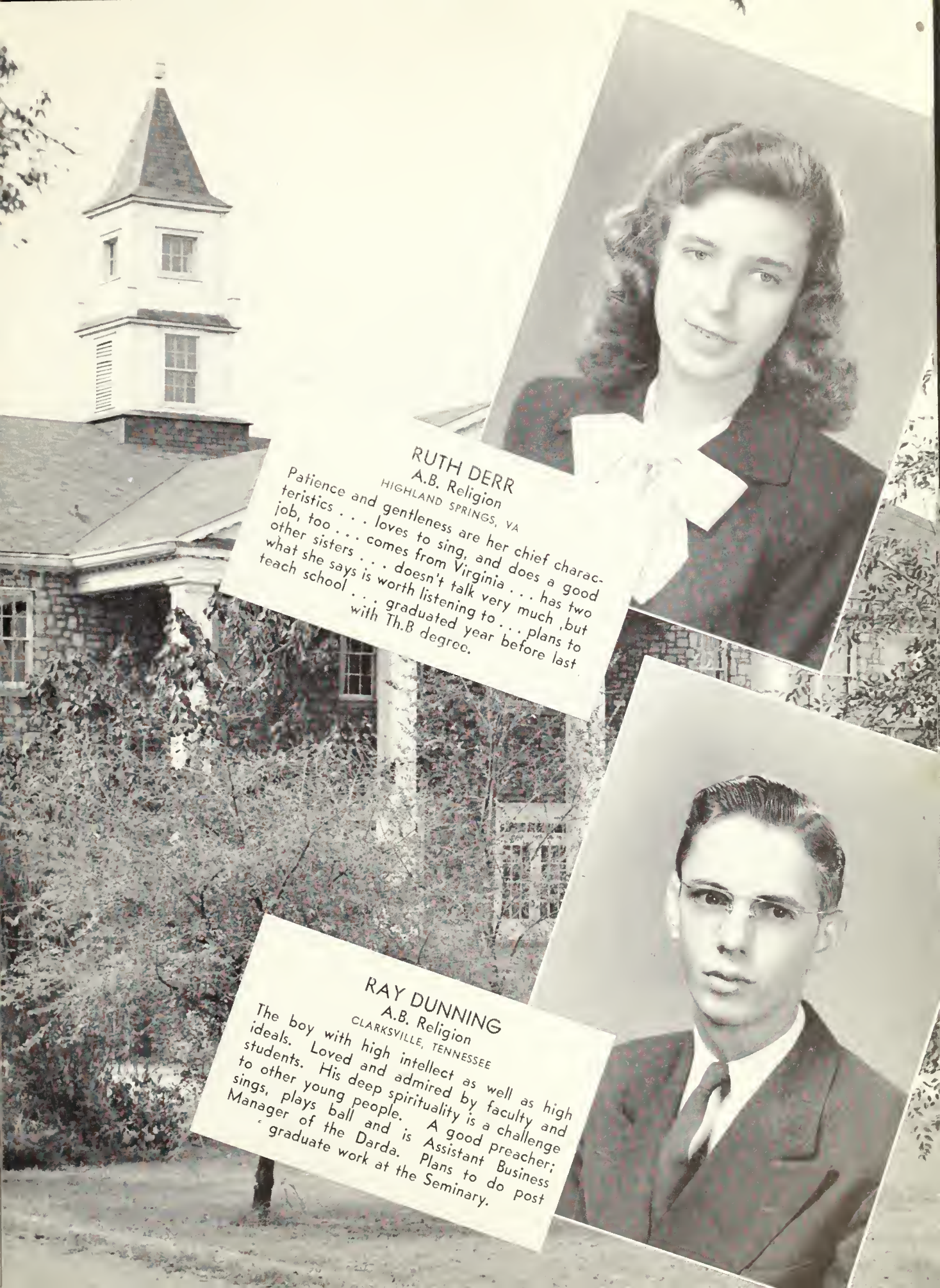
Slow and determinate . . . states his rights and stands up for them . . . just natural for him to make "A" grades . . . has a wife and one little girl . . . you never know what to expect when he speaks . . . enjoys writing letters, especially for the Darda.

**ELIZABETH DERR**  
A.B. Religion  
HIGHLAND SPRINGS, VA

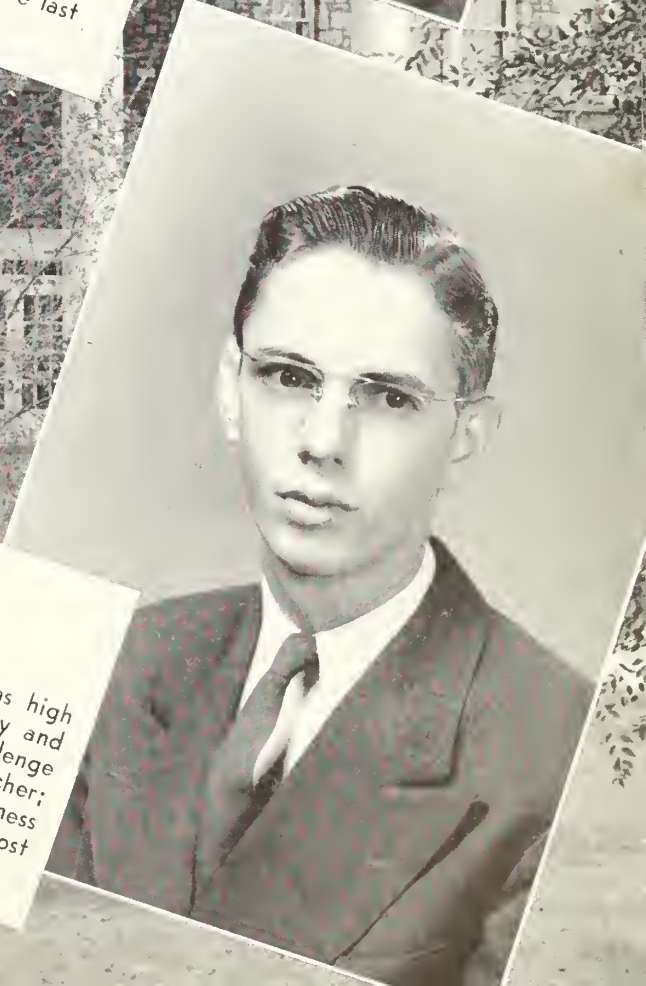
Comes to us from old Virgininny. Effecient and friendly. Sings in a trio with her two sisters. A member at South Side.—Faithful to all her tasks. Lives a consistent Christian life. Library assistant.







**RUTH DERR**  
A.B. Religion  
HIGHLAND SPRINGS, VA  
Patience and gentleness are her chief characteristics . . . loves to sing, and does a good job, too . . . comes from Virginia . . . has two other sisters . . . doesn't talk very much, but what she says is worth listening to . . . plans to teach school . . . graduated year before last with Th.B degree.



**RAY DUNNING**  
A.B. Religion  
CLARKSVILLE, TENNESSEE  
The boy with high intellect as well as high ideals. Loved and admired by faculty and students. His deep spirituality is a challenge to other young people. A good preacher; sings, plays ball and is Assistant Business Manager of the Darda. Plans to do post graduate work at the Seminary.



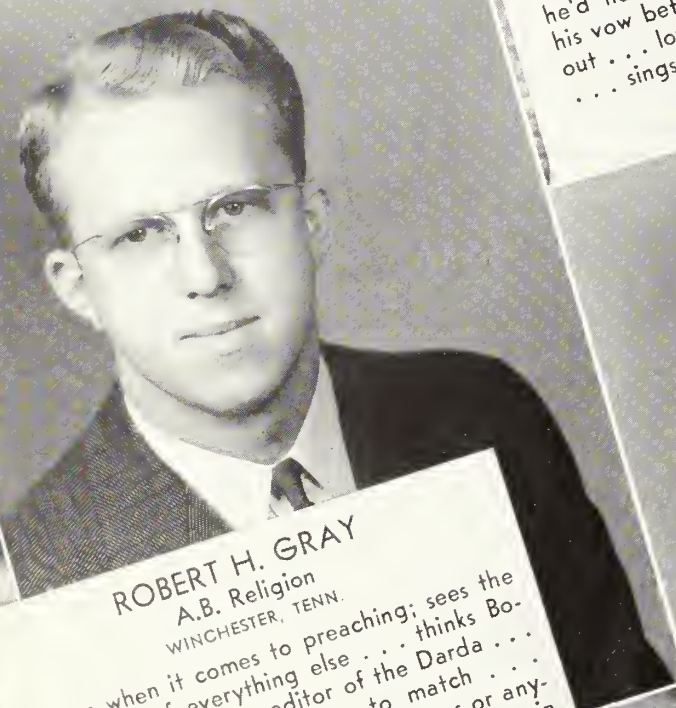


**DORIS FORBES**  
A.B. History  
ROANOKE, VA.

"Good as gold". Neat, quiet and reserved.  
Strives to ease our pains. Congenial, consistent and is kind. Faithful, dependable and a friend to all the boys. Does outstanding christian work. Loved by students and faculty.

**JASPER JENKINS**  
A.B. Religion  
CLEVELAND, MISS.

Doesn't mind people slinging mud; he comes from Mississippi . . . vowed and declared he'd never marry while in school . . . broke his vow before his second year in college was out . . . loves to tease the girls . . . preaches . . . sings . . . good-natured . . . doesn't like Greek (no discredit to him.)

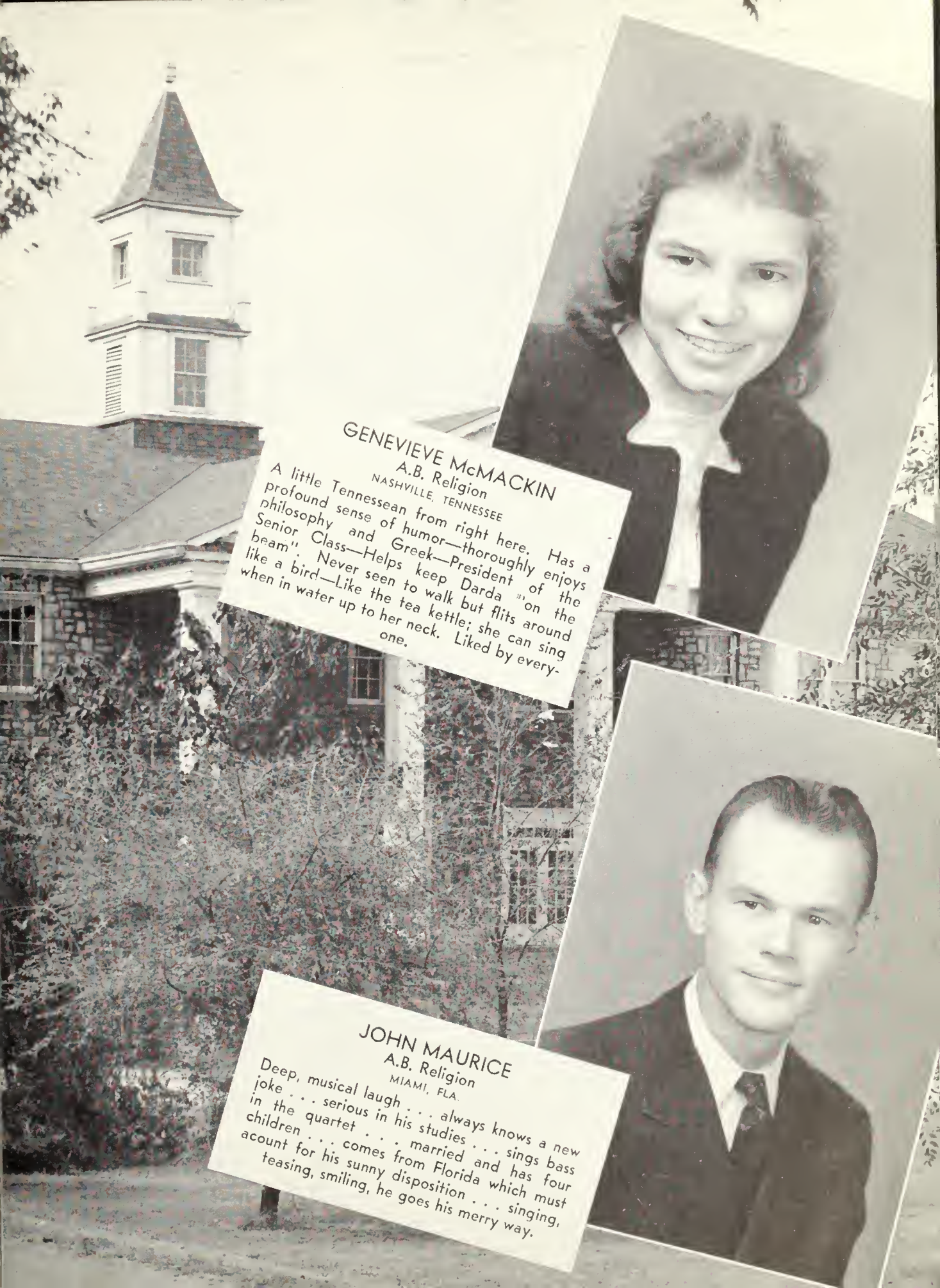


**ROBERT H. GRAY**  
A.B. Religion  
WINCHESTER, TENN.

Serious when it comes to preaching; sees the funny side of everything else . . . thinks Bontany is "wormy" . . . editor of the Darda . . . blonde hair with blue eyes to match . . . blushes easily . . . no marital problems or anything pertaining thereto . . . unswerving in what he thinks is right . . . president of Student Council one year . . . liked by everyone . . . that's Robert.







**GENEVIEVE McMACKIN**  
A.B. Religion  
NASHVILLE, TENNESSEE

A little Tennessean from right here. Has a profound sense of humor—thoroughly enjoys philosophy and Greek—President of the Senior Class—Helps keep Darda "on the beam". Never seen to walk but flits around like a bird—Like the tea kettle; she can sing when in water up to her neck. Liked by every-one.



**JOHN MAURICE**  
A.B. Religion  
MIAMI, FLA.

Deep, musical laugh . . . always knows a new joke . . . serious in his studies . . . sings bass in the quartet . . . married and has four children . . . comes from Florida which must account for his sunny disposition . . . singing, teasing, smiling, he goes his merry way.





**ALEXINE MUSE**  
A.B. English  
DELMAR, KY.

Eyes like heaven's own stars . . . hair that an  
angel would envy . . . quiet and serious . . .  
nothing ever turns her from her purpose . . .  
makes god grades . . . studying to be a  
preacher . . . neat as a pin . . . can't find a  
thing interesting in the boys . . . truly another  
"muse."

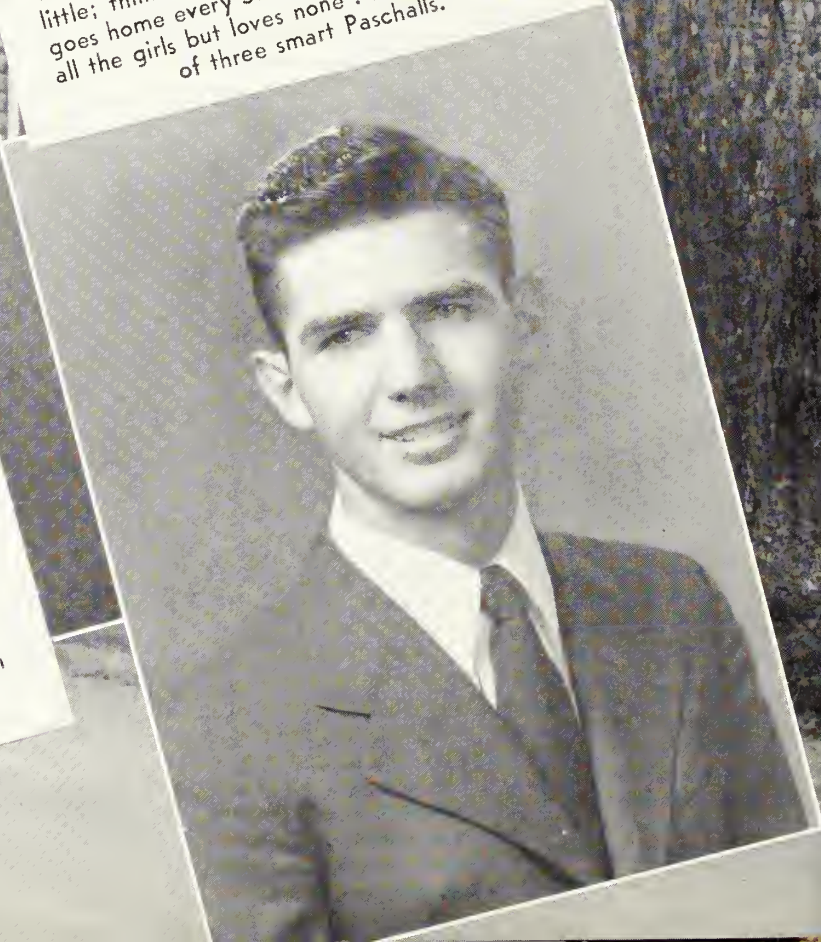


**HELEN NEISLER**  
A.B. English  
BUTLER, GA.

Came to us last year.—Gets along with every-  
one. Teaches in grade school—attends col-  
lege Hill Courch—Has a ringing testimony  
and a sweet personality. Thinks things through  
and is one we like to have around.

**HOMER PASCHALL**  
A.B. Science  
CLARKSVILLE, TENN.

Black wavy hair; blue, green or hazel eyes,  
either one you like . . . comes from Austin  
Peay . . . served in the Navy . . . deep dimples  
when he smiles . . . worries over French no  
little; thinks Science and Math are tops . . .  
goes home every Saturday . . . seemingly likes  
all the girls but loves none . . . last in a series  
of three smart Paschalls.







**DENNIS PEACOCK**

A.B. Religion  
COLUMBIA, S. C.

From South Carolina—Lives in a trailer—Was dean of men last year. Studious-likes to look into things—Pastored a church.—Served in the Army. Good preacher and Christian worker. Faithful.



**MARIE PEERY**

A.B. Religion  
PARIS, TENNESSEE

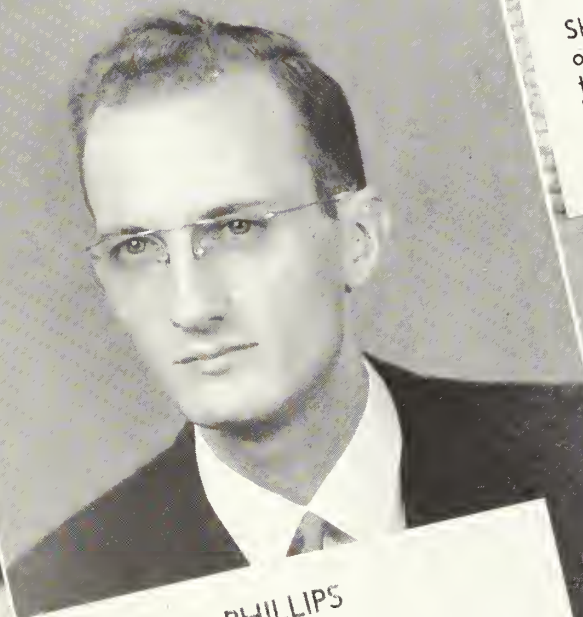
A brunette . . . hails from Paris (Tennessee, of course) . . . preaches all the funerals and weddings in the girls' dorm . . . especially enjoyed "funeralizing" Jessica and Junior, two dead birds . . . finds "Alfred" the Great interesting . . . sings tenor in a trio . . . enjoys life to the fullest . . . president of Tennessee Club.





**LEWIS PENNINGTON**  
A.B. Religion  
FOREST PARK, GA.

Called to preach—has optimism. Loves the Lord's work and is found faithful.—Has high standards. Rather tall with blonde hair and blue eyes. From Atlanta, Ga.



**ED PHILLIPS**  
A.B. Religion  
TUSCALOOSA, ALA.

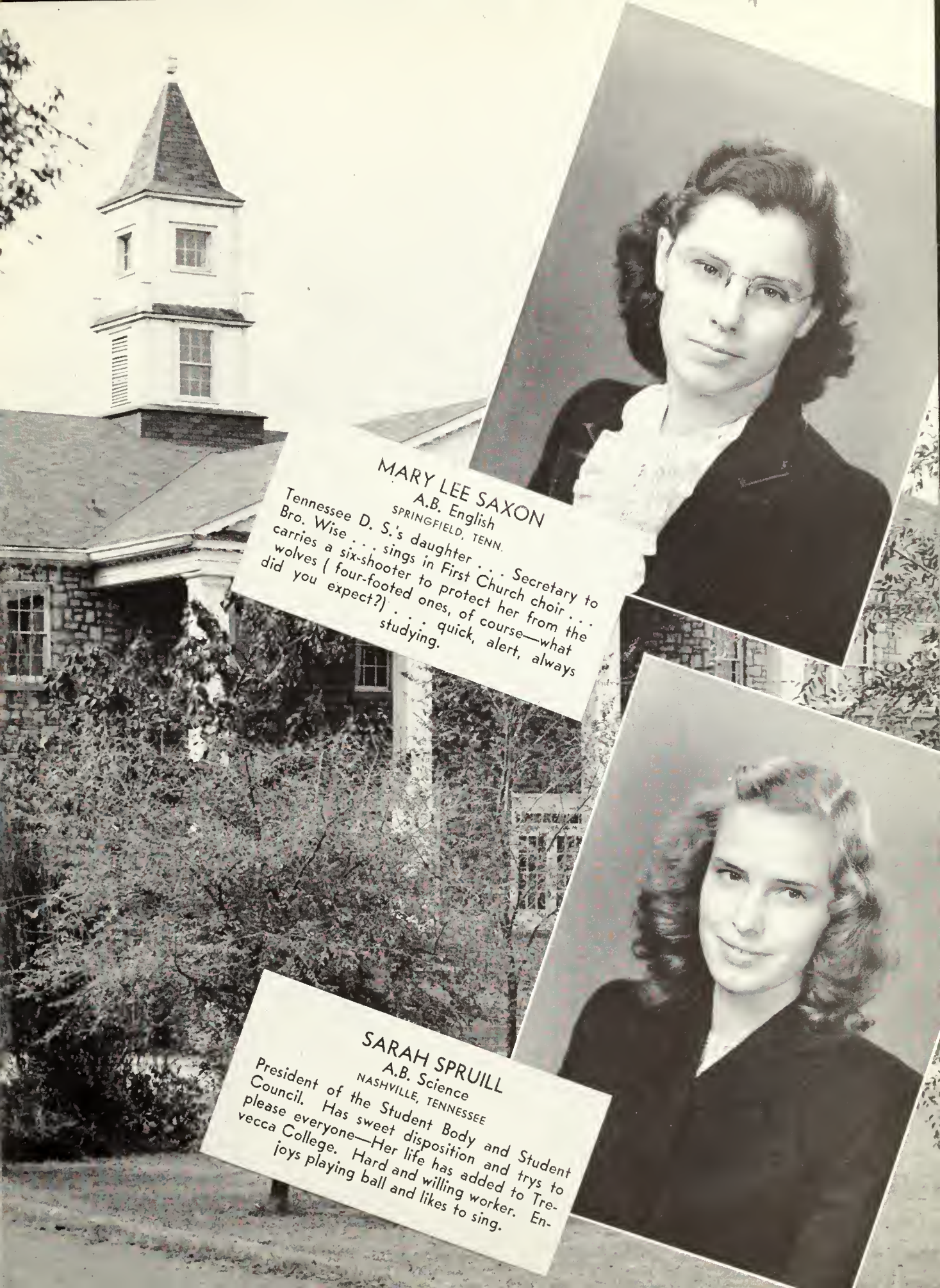
Always first in a crowd to get rained on, because his head is higher than most people's . . . loves to study, but usually not lessons . . . Prof. Spencer's assistant . . . was president of Junior class . . . thinks nothing of wearing flaming red neckties . . . sings with his sister . . . can beat piano keys until they're blue in the face.

**LUCILLE RIGGS**  
A.B. Religion  
ANNISTON, MO.

Short, neat and full of life. Holds confidence of all who know her. Sincere christian. Plans to do christian work and we know success will be her's. Not from Southeastern Educational Zone but still one of us. Friendly and enjoys being with others.





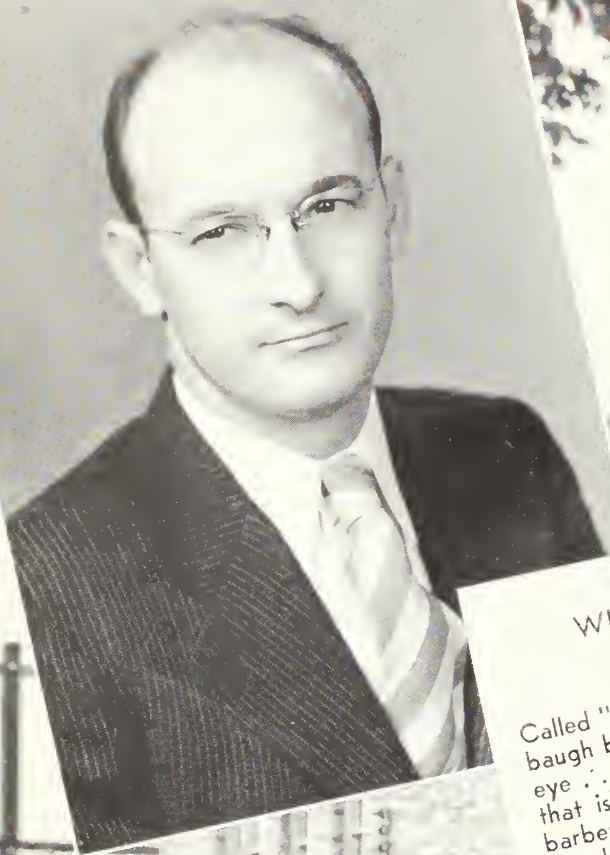


**MARY LEE SAXON**  
A.B. English  
SPRINGFIELD, TENN.  
Tennessee D. S.'s daughter . . . Secretary to  
Bro. Wise . . . sings in First Church choir . . .  
carries a six-shooter to protect her from the  
wolves (four-footed ones, of course—what  
did you expect?) . . . quick, alert, always  
studying.



**SARAH SPRUILL**  
A.B. Science  
NASHVILLE, TENNESSEE  
President of the Student Body and Student  
Council. Has sweet disposition and tries to  
please everyone—Her life has added to Tre-  
vecca College. Hard and willing worker. En-  
joys playing ball and likes to sing.





WILSON STRAUSBAUGH  
A.B. Religion  
FT. MYERS, FLA.

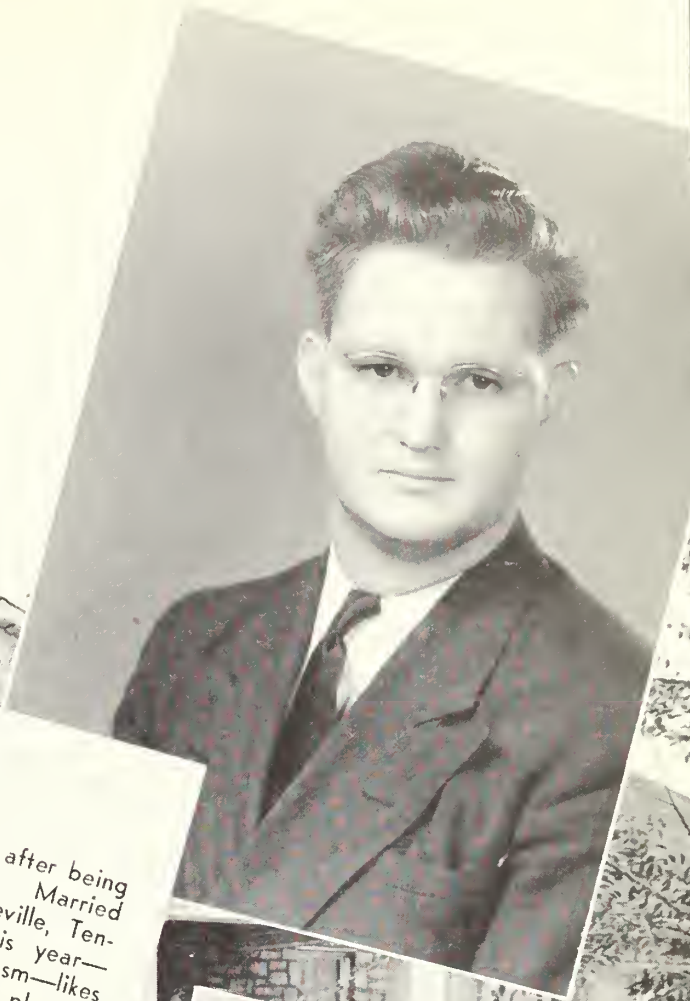
Called "baldy" by some; just plain old Strausbaugh by others . . . mischievous gleam in his eye . . . likes English Lit. (under Miss Person, that is) . . . drives what he calls a car . . . barber charges him for finding his hair instead of cutting it . . . takes few things seriously and never worries over anything five minutes.



ANNABELL WARD  
A.B. Religion  
CHARLESTON, W. VA.

A graceful blonde who carries herself with dignity sometimes and at others is frivolously light . . . sings in a trio . . . plays the piano . . . laughs and jokes with everybody . . . plans to do evangelistic singing . . . thinks that "all the world's a stage and all the men and women merely players," and her part not that of the tragedienne.





**BOB WIGGS**  
A.B. Religion  
BENTON, ILL.

Was in Trevecca before war and after being in service, came back to finish. Married Luella Russell—Pastored at Cookeville, Tennessee. Held several revivals this year—Very good preacher. Full of enthusiasm—likes to play ball. Intends to follow God's plan for His life.



**DOROTHY WILLIAMS**  
A.B. History  
COWAN, TENN

Lives up to the reputation of fat people being jolly . . . has her own philosophy of life . . . lives with the Brackens . . . when things don't suit her, she does them herself . . . a former Presbyterian, for which background she is oftentimes grateful.







# COLLEGE JUNIORS

**JUNE BOWES** hails from Milwaukee, Wisconsin. She not only is the proud wife of Marshall Bowes, but the secretary to the Business Manager of Trevecca, and a practice teacher in the Demonstration School. She is efficient in all these fields.

**MARSHALL BOWES** is the handsome husband of June Bowes. He has the dignity of a Bishop, the voice of an orator, and the ability to speak Greek (like one who has been in the same grade for four years.) He always is found with Kenneth Slifer, and Guy Glendenning, trying to rid the world of all its problems. He drives a red Hudson, that "Ollie" McCaskall can get at times to take his girl home. Marshall is from Ottawa, Illinois.

**SAMUEL BROWN** is one of those fellows proud of his state. Why shouldn't he be? He is from Kentucky. He is the husband of Lois Wigginton Brown. At present they are living in Nashville.

If you hear a laugh louder than the rest—well, that's **LOU OUIDA CARLTON**. She is solemn when the occasion demands such, but at other times she is happy and giving out cheer. She lives up to tradition that "fat" folk are jolly! She is from Thomasville, Georgia.

**MABEL CARR** is from Lancaster, Kentucky. She is always found in the crowd, gathering news, and giving out some. She enjoys (?) working at Olshines on Saturdays. Are you living up to the red head tradition, Mabel?

He is a quiet, inoffensive fellow, always "tending" to his own business. He has all the responsibilities of a married man, and is doing a fine job with them. Yes, it is **BURLE DeBORD**. Burle is from Boise, Idaho.









# COLLEGE JUNIORS

**GUY GLENDENNING** is from Paden City, West Virginia. He always has a smile. He served his country in the Army and did a good job of it. He brought back some "spoils" from war (a wife that is). "Guy," known to us, is a well-liked student and a good preacher—(thanks to Miss Hooper's speech class.)

**VERA HAMMOND** is the wife of Prof. Hammond. She is a good housewife, a good student, loves to help in box suppers, plays games, and instigates school projects; leads singing in College Hill Church, and helps make the community better.

If it is a gentleman with a brief case—and a scholarly look, that must be **WILFORD HAWKINS**. He and his brief case are inseparable. Wilford is a good sport, a gentleman at all times, and a good student. He is married and living at Nashville at present. His home originally is New Albany, Indiana.

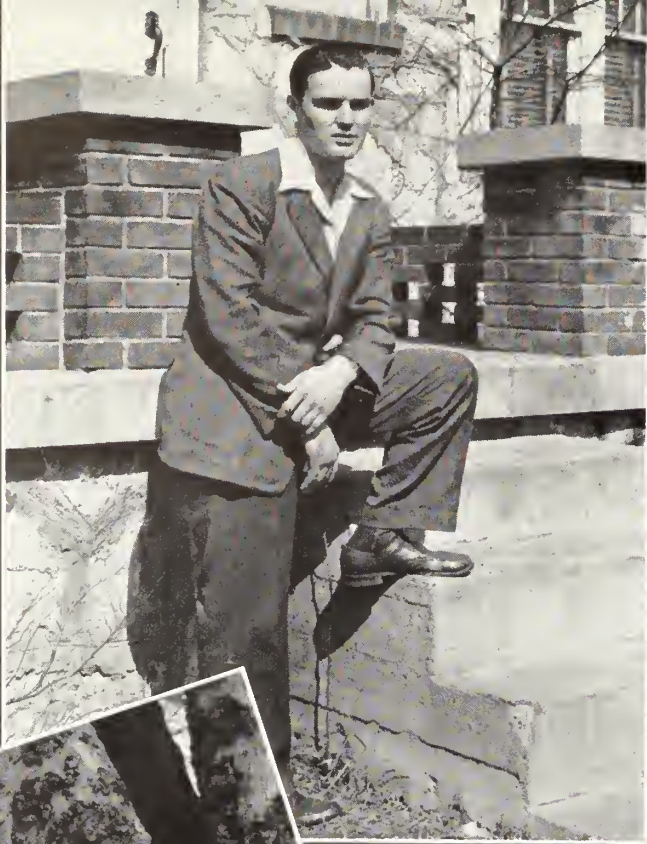
A tall, slender fellow who can portray the part of Paderewski any time, must be **RALPH HOWE**. He likes the scientific world, and cannot figure out if man is classified in the "vertebrate" or "invertibrate" family. The "World Book" and Ralph are synonymous. He also likes to "tinker" with radios—and now and then he gets one to run. But it takes Madelyn (Ralph's wife) to keep him on the run.

**MADelyn HOWE**—(yes, that's Ralph's wife) has the walk of a Tennessee hillbilly, the brogue of a West Virginian, the voice of an orator and the dramatics of a preacher who has lost his place in a sermon. She is on the Student Council. Madelyn lives in Nashville with her husband except what time she spends going to Charleston, West Virginia, her home.

She's always working hard in the kitchen keeping the place clean for us. She carries the load that she has like a queen. If I were the judge, I would say that there are some queens uncrowned. We all appreciate her contributions to our school and our life. She is poised, ambitious, a Christian in every respect. By doing a lot of little things she has become big. That's **CHRISTINE JENKINS** from Cleveland, Mississippi.









## COLLEGE JUNIORS

**W. A. JORDAN** is from the good state of Tennessee (Jackson is the city.) We just call him "W. A." He always finds a place to be useful. He makes a good husband, and father, works at Montgomery Wards, is a good man, helps in Sunday School and Church work, is at home with a group of boys in a Daily Vacation Bible School. We appreciate your clean life, W. A.

A prominent "Roman" nose, an ugly grin, and a feminine laugh; a car filled with boys on their way to Hail's College Grill, a group of girls all around him, the sound of shuffling loafers on the Ad Building floor—that's **ELDO LANG** from Corydon, Indiana.

**CARL POWERS** is our "Campus Cowboy." Why? Well, he is from that big state of Texas. Port Arthur to be exact. He has only been with us one year, but has proven himself. Carl has a wife who goes to school, cooks, gives readings, (remember Jonah), and keeps Carl moving.

**CORLAS ROBY** is from Sallis, Mississippi. He has conducted himself like a gentleman in our midst. We appreciate his clean cut ideas, and convictions. His philosophy is "better seen than heard."

She is neat in her appearance, keeps a clean, tidy apartment, makes a "homey" atmosphere for her husband, cooks everything well, especially cherry pie, makes you want to be better just by being around her and watching her clean life; is a good student, and admired by all. That's **WILLENE ROSA** from Nashville.

He has the privilege of being the husband of the one described above. He served his country in the Navy, lived a clean life while there accomplished things for God that sound like miracles of old, came back to Trevecca when Uncle Sam released him, married the girl he had lived true to all his life, set up the campus barber shop again, glides around in a '47 Studebaker, president of Christian Workers' Association—that's **ADRIAN ROSA**. Thanks for your clean cut ways and living, Adrian. We need more like you.









# COLLEGE JUNIORS

**JOSEPHINE SHIPPEY** is from Calhoun City, Mississippi. She enjoys clean fun, likes to study (?), tends to her own business, has the color of red hair that is admired. We appreciate your contributions, Josephine.

If she is with Paul Gomer, it must be **THELMA STREET**. It has been that way for a year or so now. She is studious, likes campus sports, writes for Bro. Wise's weekly Church paper, and serves on Trev-Echoes Staff at present. Thelma is from Nashville.

If he thrills at the sound of organ music, it must be **WALLACE THOMPSON**. Wallace is from Fitzgerald, Georgia, wears loud ties (?) or does he?—makes good grades, works hard at A. & P. Super Market, helps in Grace Church services. Can sing well and is at home playing the piano or organ. He cannot make up his mind about the girls.

**EDRELL WHITMON** is from Mobile, Alabama. She has the finest pastor you could find—Rev. Lawrence Hicks. Edrell used to carry the load of the world on her shoulders and move rather slowly in our midst; now she carries the love of Jack Sanders in her heart. Her roommates live pretty high because of the clouds that Edrell lives on while dreaming about Jack. You two be sure you get your "heads" as well as your "hearts" in this love affair.

**LAURA NELL WILLIAMS** is from Sciotoville, Ohio. She lives out in town and works at Walgreen's Drug Store. She is preparing to be a teacher (let's hope not an old maid), takes her work seriously and gets a thrill out of living.







Class Officers

First Row

ROSALEEN ADKINS ..... Midkiff, West Virginia  
 HUBERT BANKSTON ..... Jasper, Alabama  
 ERWIN BARDWELL ..... Ponchatoula, Louisiana

# C O L L E G E

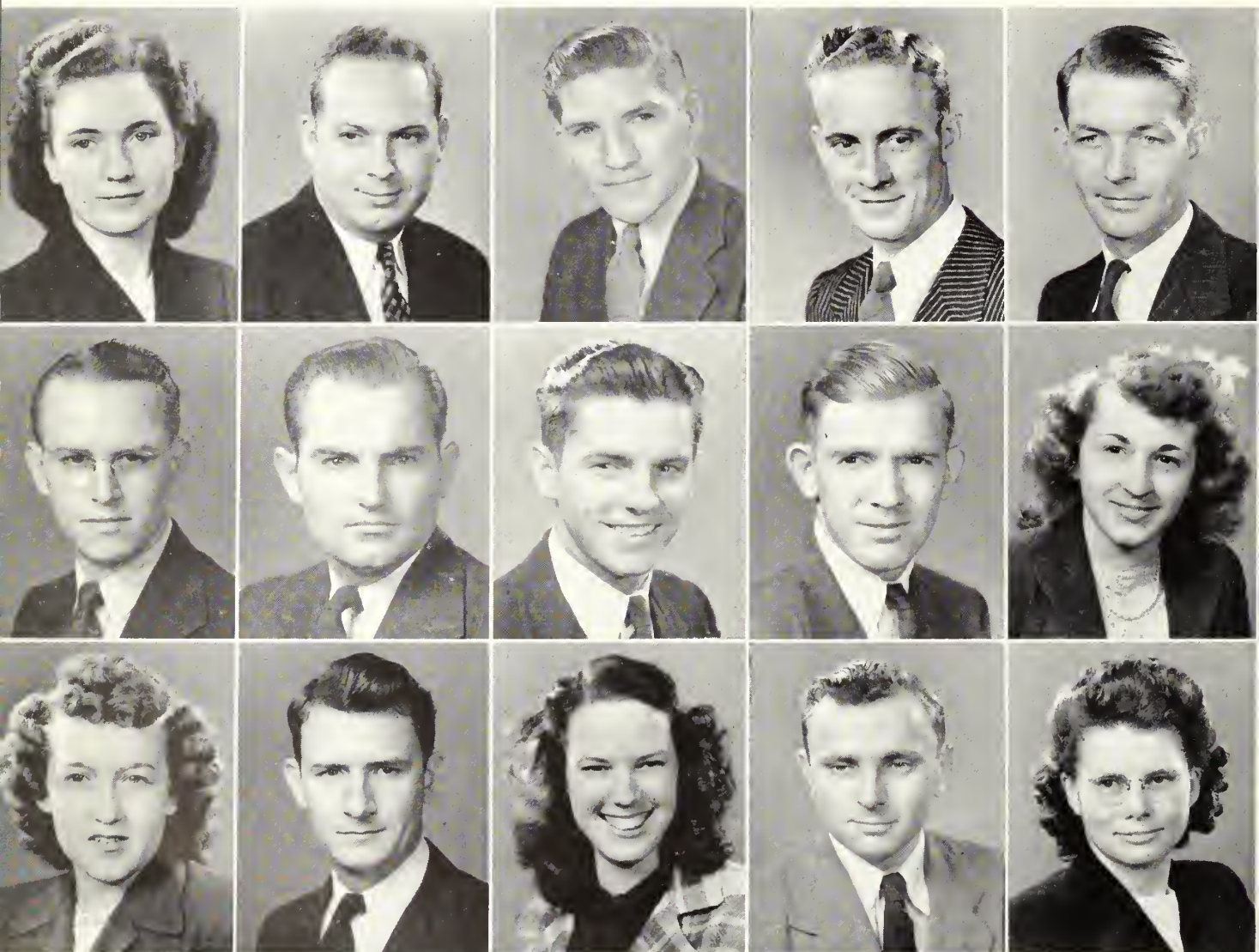
HOMER BENSON ..... Aliceville, Alabama  
 JOSEPH BENSON ..... Princeton, Florida

Second Row

AARON BESS ..... Nashville, Tennessee  
 A. D. BOONE ..... Jayess, Mississippi  
 FORD BOONE ..... Jayess, Mississippi  
 HERBERT BROWN ..... Nashville, Tennessee  
 PAULINE BUMPUS ..... Birmingham, Alabama

Third Row

LOIS CALKINS ..... Arlington, Virginia  
 WESLEY CAMPBELL ..... Nashville, Tennessee  
 GLEN ELLEN CASSELL ..... Miami, Florida  
 WILLIAM CHEEK ..... Graham, North Carolina  
 LILLIAN CHRISTENSEN ..... Miami, Florida





# SOPHOMORE CLASS

## First Row

DON CONRAD ..... Greensboro, North Carolina  
 TROY COOK ..... Nashville, Tennessee  
 JOHN DIX ..... Nashville, Tennessee  
 GRACE EBY ..... Miami, Florida  
 BILLIE EDWARDS ..... Miami, Florida

## Second Row

JANICE ENGLE ..... Richmond, Indiana  
 WILLIAM FIGHTMASTER ..... Nashville, Tennessee

VIRGINIA GRIGGS ..... Bennettsville, South Carolina

CAROLINE HALL ..... Columbus, Georgia

BETTY SUE HAMBY ..... Tuscomb, Alabama

## Third Row

CHARLES HANEY ..... Fairmont, West Virginia

MARY JOYCE HANSON ..... Bryon, Georgia

CLARABELLE HARDESTY ..... Conesville, Ohio

TOMMY HARDIN ..... Juliette, Georgia

ROSCOE HENDERSON ..... Nashville, Tennessee







Orientation Week—We Meet New Students

# COLLEGE

CLEMMIE KEELING ..... Donelson, Tennessee  
 JAMES McCASKELL ..... San Antonio, Texas

## Second Row

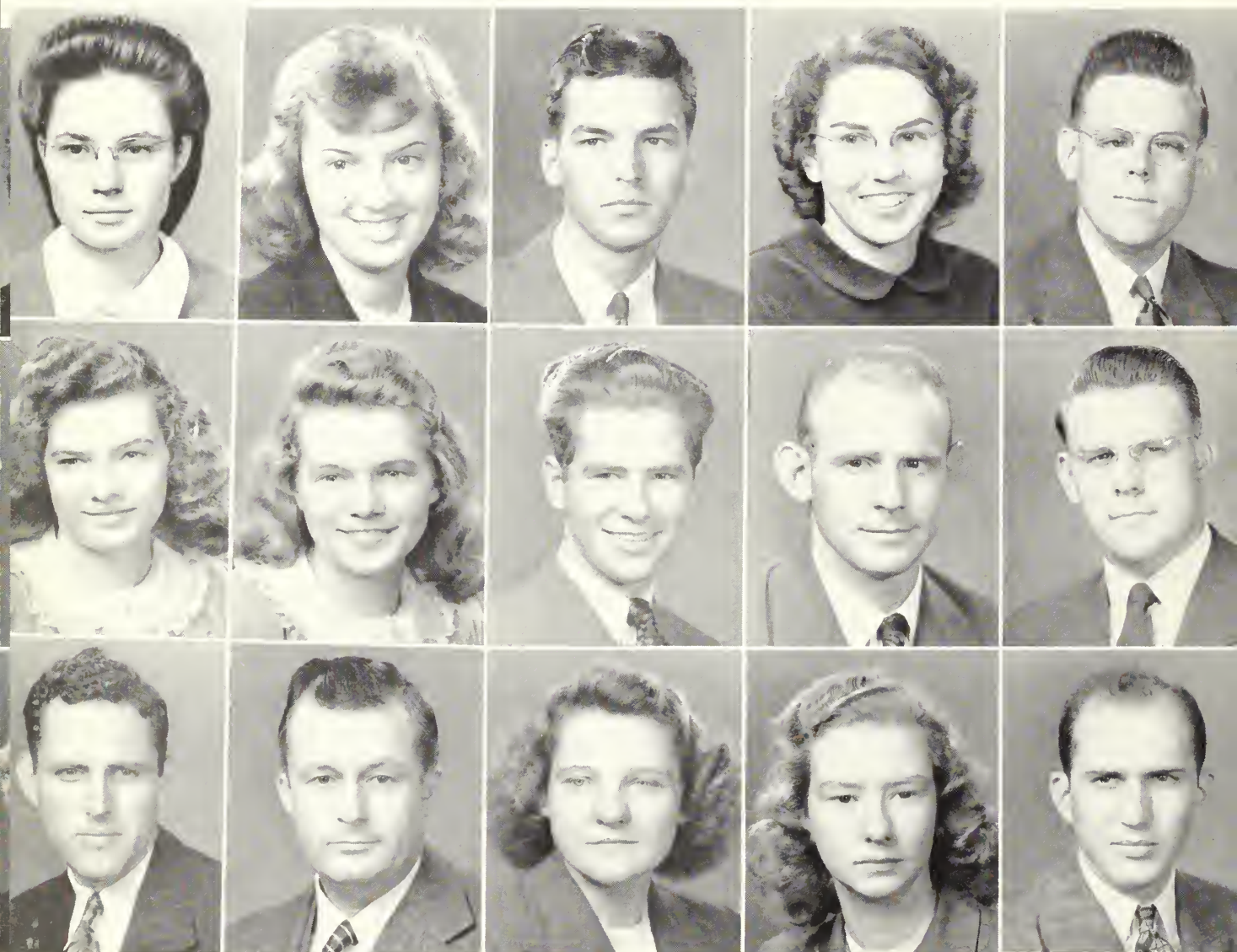
EVA FAY MACKEY ..... Nashville, Tennessee  
 NEVA GAY MACKEY ..... Nashville, Tennessee  
 ORMAN MARSH ..... Britian, Connecticut  
 RALPH MATTINGLY ..... Nashville, Tennessee  
 MILTON McCASKELL ..... San Antonio, Texas

## Third Row

FRED MOORE ..... Nashville, Tennessee  
 OWEN MORRIS ..... Plantersville, Mississippi  
 FLORENCE NAIL ..... Macon, Georgia  
 JOYCE OLIVER ..... Catlettsburg, Kentucky  
 MORRIS PEEPLES ..... Nashville, Tennessee

## First Row

IVA HUDSON ..... Pascagoula, Mississippi  
 FAYE IHRIG ..... Ft. Thomas, Ken'tuck  
 THOMAS JONES ..... Bowling Green, Kentucky





# SOPHOMORE CLASS

## First Row

CHARLES PHIPPS ..... Springfield, Tennessee

PAUL PIERCE ..... Kingsport, Tennessee

CARL PRATT ..... Nashville, Tennessee

BERTHA RIGHOUSE ..... Syracuse, Ohio

J. C. ROBERTS ..... Richmond, Kentucky

## Second Row

KENNETH SLIFER ..... Troy, Ohio

CLAYTON SMITH ..... Nashville, Tennessee

CARL SMITHSON ..... Franklin, Tennessee

BROCK SPEER ..... Nashville, Tennessee

JEAN SPRUILL ..... Nashville, Tennessee

## Third Row

MARY STOVALL ..... Highway Kentucky

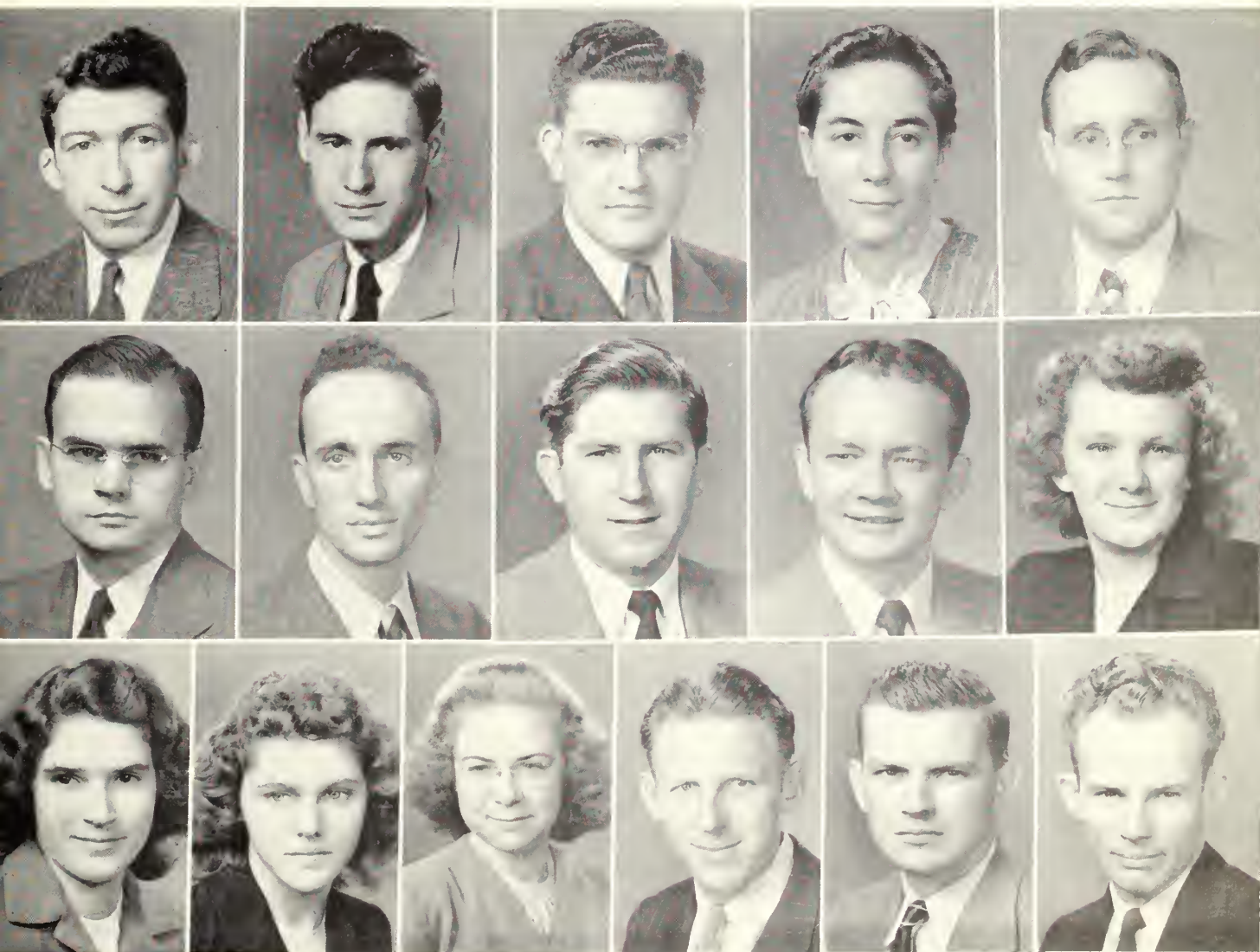
JANIE LEE TAYLOR ..... Bennettsville, South Carolina

PAULINE TAYLOR ..... Akron, Ohio

WALTER THOMPSON ..... Bigelow, Arkansas

J. C. TOUSLEY ..... Columbus, Mississippi

FRANK TUGGLE ..... Miami, Florida







Class Officers

First Row

JAMES AGEE ..... Old Hickory, Tennessee  
BOB ALLEN ..... Delmer, Kentucky

Second Row

MARVIN APPLEBY ..... Nashville, Tennessee  
LILLIE MAE ARNOLD ..... Selma, Alabama

Third Row

ROGER ATWOOD ..... Corydon, Indiana  
DON BALLARD ..... Nashville, Tennessee

Fourth Row

MARIE BANKSTON ..... Lucedale, Mississippi  
LOLA BASKETT ..... Greenville, Tennessee

OPPOSITE PAGE

First Row

SAMUEL BLAKE ..... Naval Base, South Carolina  
KEITH BOTTLES ..... Corydon, Indiana  
LILLIE MAE CALKINS ..... Arlington, Virginia  
LEWIS CARNES ..... New Castle, Indiana  
HARRY CARPENTER ..... Farmington, West Virginia

Second Row

BERNICE CARTER ..... Titusville, Florida  
LAVERNE CASE ..... Magnolia, Mississippi  
HAROLD COATS ..... Yukon, Oklahoma  
MARTHA COCKRELL ..... Birmingham, Alabama  
GEORGE COCORIS ..... Pensacola, Florida

Third Row

AVORY COOK ..... Lewisburg, Pennsylvania  
JOANNE COOK ..... Kennard, Indiana  
GEORGE CRAVENS ..... Hartville, Missouri  
MARTHA CURRY ..... Garlon, Ohio  
RUTH DAUGHERTY ..... Muncie, Indiana

Fourth Row

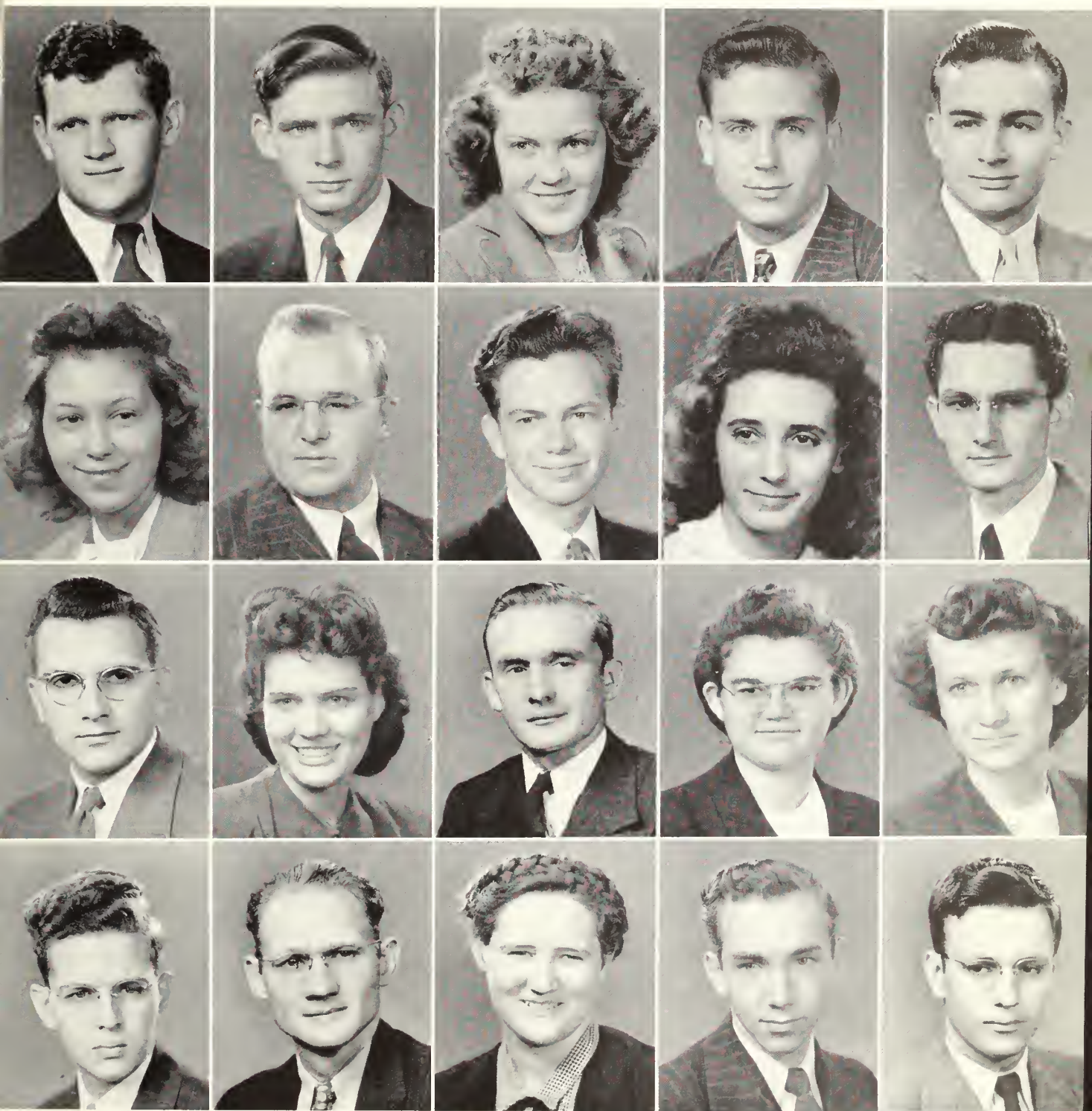
JAMES ERRICKSON ..... Clearwater, Florida  
MAURICE EVANS ..... Canton, North Carolina  
MELVA EVANS ..... Canton, North Carolina  
SMITTY FERGUSON ..... Nauvoo, Alabama  
CAREY FOSTER ..... Greensboro, North Carolina

# COLLEGE





# FRESHMAN CLASS





# COLLEGE FRESHMAN CLASS

## First Row

HILDA FREY ..... Greenbrier, Tennessee  
ALVINA FREDERICK ..... Tripps, South Dakota

## Second Row

VALEDA GERLING ..... Union, Mississippi  
PAUL GOMER ..... Nashville, Tennessee

## Third Row

MARGARET GRAVES ..... Franklin, Tennessee  
CARL GRAY ..... Glasgow, West Virginia

## Fourth Row

JANICE GULLETT ..... Catlettsburg, Kentucky  
CARL HADDIX ..... Elkins, West Virginia

## Fifth Row

DAVID HAIL ..... Chelyan, West Virginia  
DON HALE ..... Herondale, Florida

## OPPOSITE PAGE

## First Row

CLARINE HALL ..... Dayton, Ohio  
JOHN HAMBY ..... Tuscombua, Alabama  
CHARLOTTE HAMPTON ..... Atlanta, Georgia  
HARVEY HARRIS ..... Fairview, Montana  
LOYD HARRISON ..... Norfolk, Virginia

## Second Row

TSUNEO HOKADA ..... Honolulu  
AGNES HOLLY ..... Nashville, Tennessee  
EDEL HOLMAN ..... Merigold, Mississippi  
CHARLES HORNE ..... Moultrie, Georgia  
CORA HUDDLESTON ..... Atlanta, Georgia

## Third Row

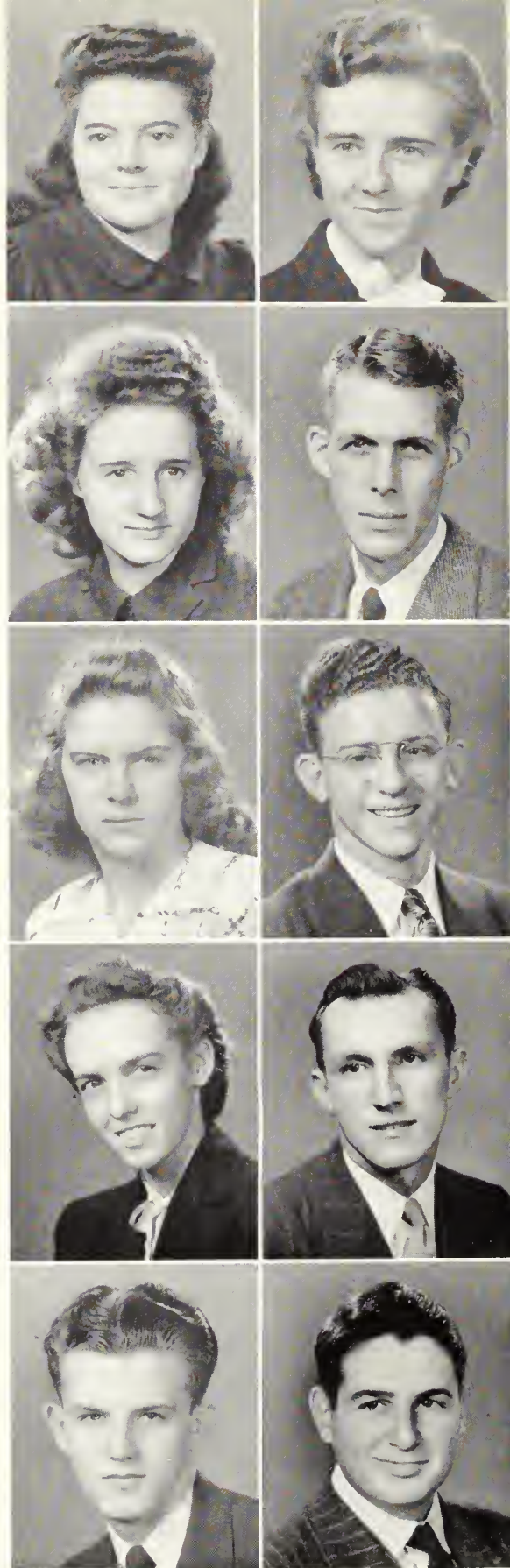
JOHN HUFF ..... Shawmut, Alabama  
GLEN JAKES ..... Nashville, Tennessee  
WILLIAM JAMES ..... Charleston, West Virginia  
BILLY JARED ..... Nashville, Tennessee  
DON JERNIGAN ..... Pensacola, Florida

## Fourth Row

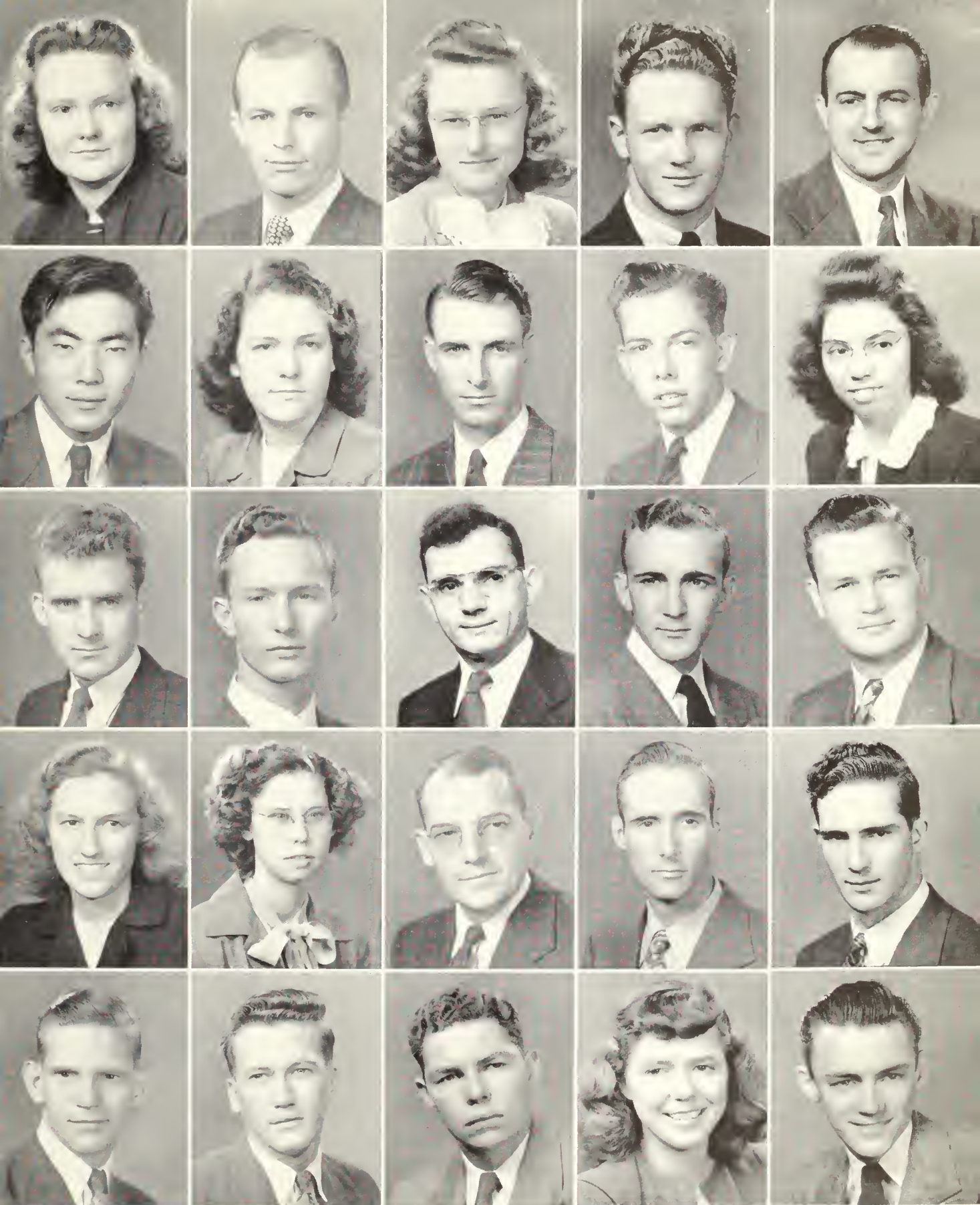
DORIS JEWELL ..... Nashville, Tennessee  
EDITH LANCASTER ..... Fulton, Kentucky  
LUKE LIGHT ..... Jonestown, Pennsylvania  
J. B. LINDSLEY ..... Nashville, Tennessee  
RICHARD LORD ..... Sanford, Florida

## Fifth Row

MARION LUMPKIN ..... Fairfax, Alabama  
MALCOLM MCNEER ..... Durant, Mississippi  
WILLIAM MARTIN ..... Columbia, South Carolina  
MARTHA MOORE ..... Charleston, West Virginia  
WALTER MOORE ..... Ashland, Kentucky









# COLLEGE FRESHMAN CLASS

## First Row

FAYE PAINTER ..... Belington, West Virginia  
LOTTIE PHILLIPS ..... Tuscaloosa, Alabama

## Second Row

MILDRED PITTMAN ..... Charleston, West Virginia  
GEORGE PITZER ..... Fairmont, West Virginia

## Third Row

ANN PLESSINGER ..... Phila, Pennsylvania  
VIRGINIA POWERS ..... Port Arthur, Texas

## Fourth Row

MAURICE RHODEN ..... Dismore, Florida  
BRUCE ROBERTS ..... Norfolk, Virginia

## Fifth Row

CARLEEN ROBERTSON ..... Paris, Tennessee  
CARLAS ROBY ..... Sallis, Mississippi

## OPPOSITE PAGE

## First Row

CHARLENE RUSHING ..... Sylacauga, Alabama  
TERRELL SANDERS ..... Barnesville, Georgia  
DOUGLAS SARTIN ..... Jayess, Mississippi  
NORMAN SAVAGE ..... West Helena, Arkansas  
ESTHER SAXON ..... Springfield, Tennessee

## Second Row

GEORGE SCHUTT ..... Nashville, Tennessee  
HELEN SEWELL ..... South Charleston, West Virginia  
NORMAN SITES ..... Onego, West Virginia  
HERMAN SLONECKER ..... Nashville, Tennessee  
CHARLES SLUSHER ..... Lincoln, Arkansas

## Third Row

CATHERINE SMITHSON ..... Dunbar, West Virginia  
DOROTHY STALLWORTH ..... Tuscaloosa, Alabama  
ROB STAPLES ..... Kirksey, Kentucky  
JAMES STEELE ..... Miami, Florida  
DOROTHEA STEVENSON ..... Lovelow, Kentucky

## Fourth Row

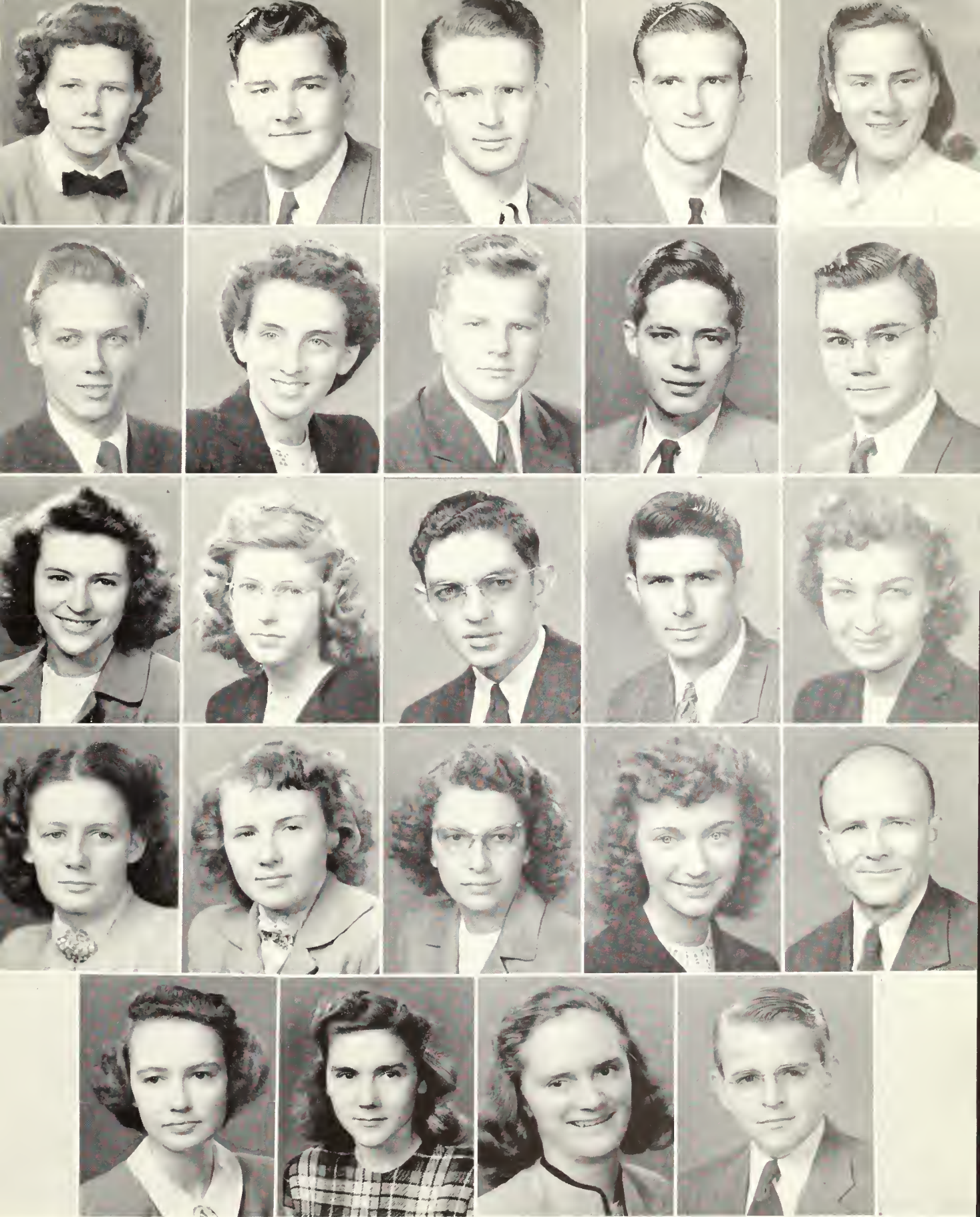
JEANNINE STEWART ..... Glasgow, Kentucky  
MARY LEWIS STRODE ..... Glasgow, Kentucky  
FREDDIE SWEENEY ..... Floyd, Virginia  
JUNE SWINFORD ..... Covington, Kentucky  
LUNDY THOMPSON ..... Augusta, Georgia

## Fifth Row

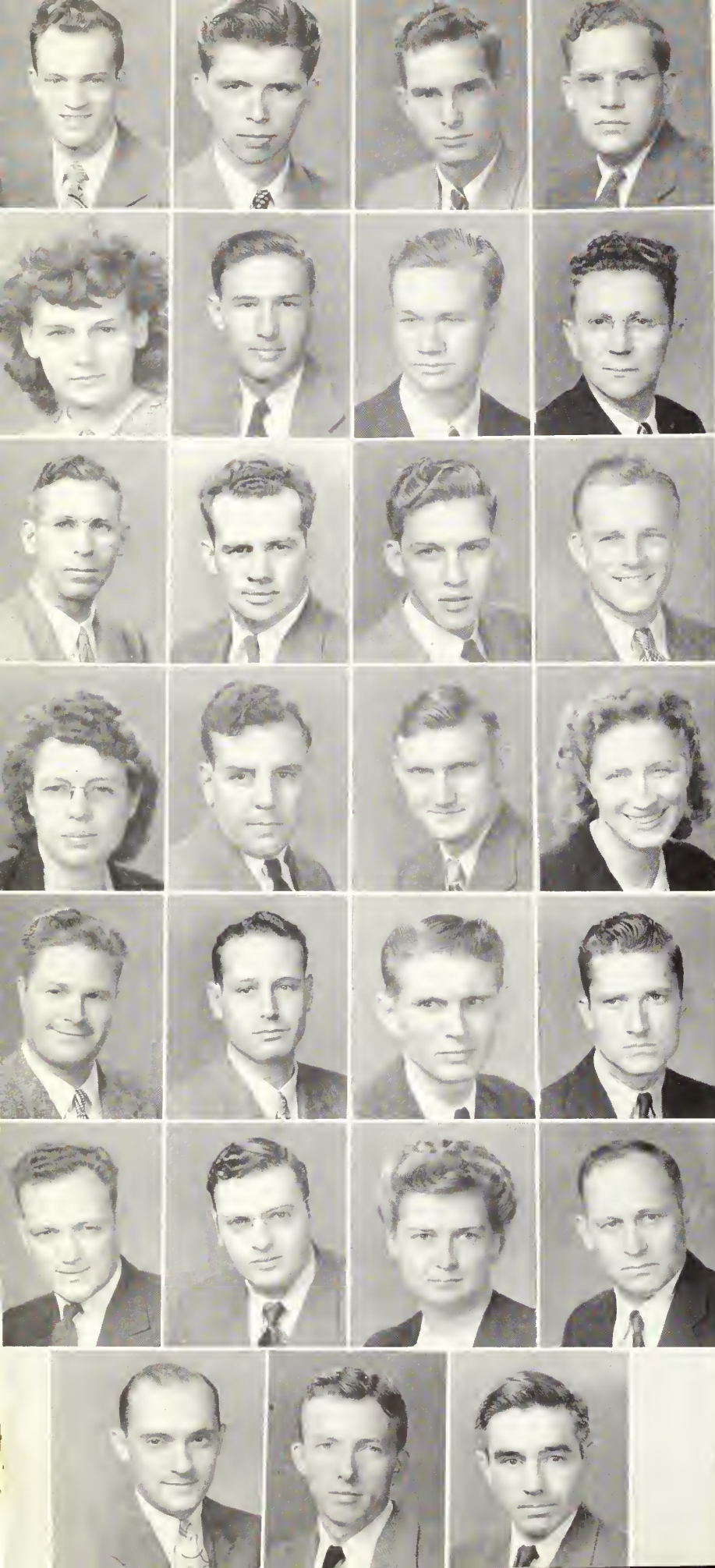
RUTH TOOPS ..... Osborne, Ohio  
REBECCA TOUSLEY ..... Columbus, Mississippi  
BETTY WATSON ..... Cullman, Alabama  
NILE WEST ..... Fairmont, West Virginia











# JUNIOR THEOLOGICAL

LAWRENCE ADAMS  
Zachariah, Kentucky

JOSEPH BANNISTER  
Memphis, Tennessee

BLENN BAUN  
Mercer, Pennsylvania

ARCHIE BRITT  
Floyd, Virginia

JUDITH CARO  
Yonkers, New York

HENRY COOPER  
White Springs, Florida

HERMAN FARMER  
Dolye, Tennessee

MARION FORSYTHE  
Rockhill, South Carolina

ERNEST GATES  
Halley, Texas

EARL GRIFFIN  
Renard Mills, Ohio

ROBERT GRIFFITH  
New Castle, Indiana

RAY GULLETT  
Nashville, Tennessee

DORA HANEY  
Magnolia, Mississippi

SCOTT HOWARD  
Nashville, Tennessee

BENNIE HULETT  
Catlettsburg, Kentucky

JEAN HULETT  
Catlettsburg, Kentucky

CECIL ISHEE  
Nashville, Tennessee

J. C. KELLEY  
Fairfax, Alabama

JARVIS OATES  
Memphis, Tennessee

EDWARD PALMER  
Augusta, Georgia

PIERCE REID  
Biloxi, Mississippi

WILLIAM SARANTHUS  
Selmer, Alabama

LUNELLE SHELBY  
Nashville, Tennessee

GILBERT SHOWS  
Nashville, Tennessee

OSCAR SMITH  
Logan, West Virginia

EARL STOREY  
Aurora, Indiana

ARTHUR UNDERWOOD  
Basham, Virginia





# H I G H   S C H O O L





# . . . THE

## First Row

MINTA ZELL AKERS . . . . . Charleston, West Virginia  
BILLY ANDERSON . . . . . Nashville, Tennessee

## Second Row

BOB BENSON . . . . . Nashville, Tennessee  
ANDY BENSON . . . . . Princeton, Florida

## Third Row

ADELINE BOYER . . . . . Hamlin, West Virginia  
EUGENE BROOKS . . . . . Flowery Branch, Georgia

## OPPOSITE PAGE

## First Row

EUGENE CAIN . . . . . Clarkson, Kentucky  
JOHN CHANDLER . . . . . Indianapolis, Indiana  
JUANITA EBY . . . . . Fort Lauderdale, Florida  
OMER HAMILTON . . . . . Irvine, Kentucky  
BULAH MAE HILL . . . . . Holt, Alabama

## Second Row

DELORES LOBB . . . . . Wurtland, Kentucky  
WILMA LOBB . . . . . Wurtland, Kentucky  
ROBERT McCLAIN . . . . . Cookeville, Tennessee  
DANIEL McNUTT . . . . . Valley Station, Kentucky  
ESTHER ODOM . . . . . Foley, Alabama

## Third Row

ODIE PAGE . . . . . Pompano, Florida  
PAUL STANLEY . . . . . Logan, West Virginia  
NELL SUTTON . . . . . Old Hickory, Tennessee  
BOB TAYLOR . . . . . Ardmore, Oklahoma  
ROBERT YATES . . . . . Hermitage, Tennessee

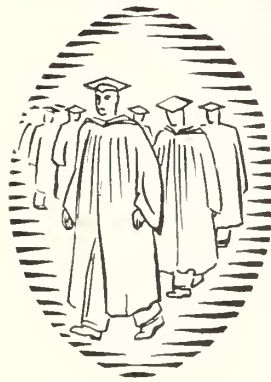
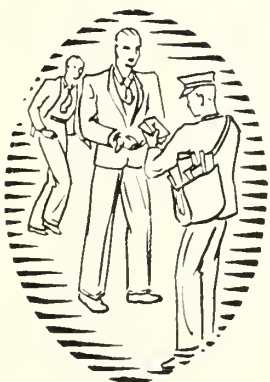
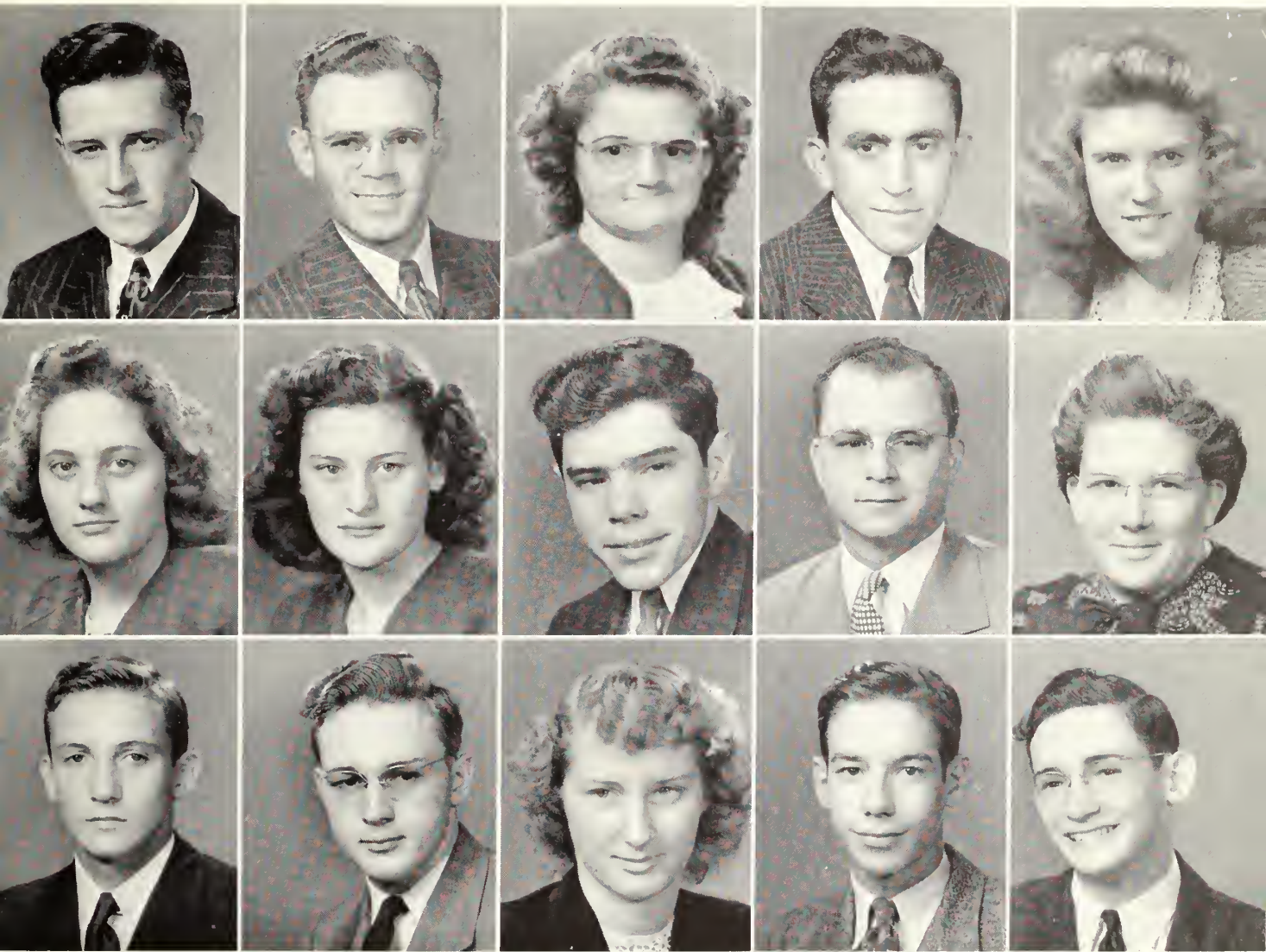


## CLASS OFFICERS

BILLY ANDERSON . . . . . President  
JUANITA EBY—OMER HAMILTON—WILMA LOBB  
MR. SPENCER . . . . . Sponsor



# HIGH SCHOOL SENIORS





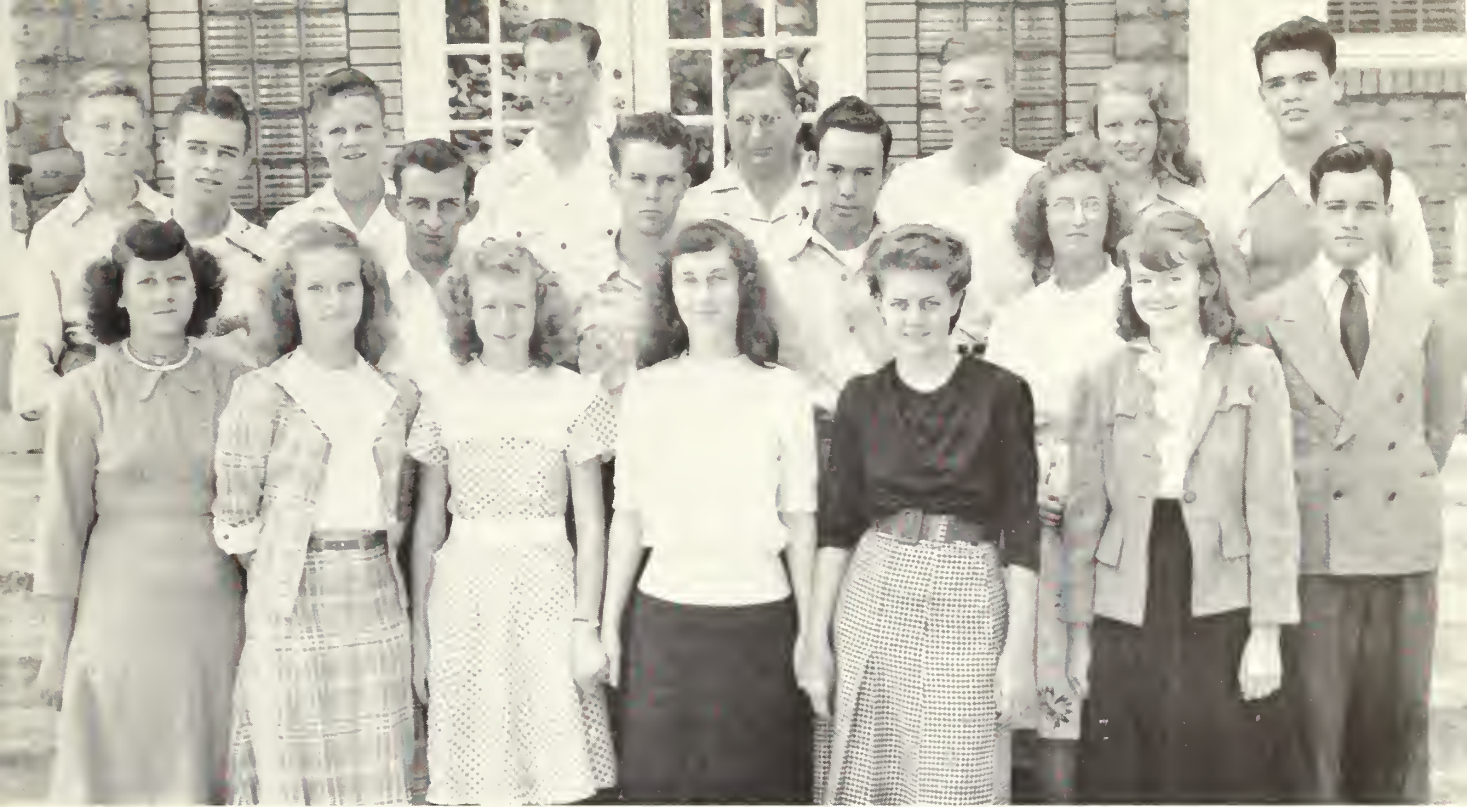


Top: Juniors

Bottom: Sophomores

# H I G H S C H O O L





Top: Freshmen

## JUNIORS

First Row: Geneva Mays, Betty Howard, Roy Philemon, Shirley VanLuven, Wanda Pinaire, Helen Allen.

Second Row: Galena Brown, Bob Parker, Charles Armour, Katherine Boone, Pauline McCosh.

Third Row: Bobby Hoots, Ben Murphy, Leo Williams, Ben Speer.

Third Row: Don Green, John Smith, Arden Haddix, Grant Browning, Edwin Nance, Wayne Shelton.

Fourth Row: Evelyn Smith, James Hall, Paul Taylor, Bill Dillon, Charles Duckett.

## SOPHOMORES

First Row: Sibyle Olive, Muriel Howard, Mary Laura Benson, Rebecca Spruce, Juanita Farley, Ramona Burke, Eddie Williams.

Second Row: Cannon Hassell, Janris McManus, Gwen Redford, Edna Shock, Joanne Richardson, Billy Crane, Mary Frances Parker.

First Row: Doris Smith, Becky Grayson, Geneva Gentry, Betty Bias, Jean Wood, Fay Layfield.

Second Row: Billy Byrd, Henry Temple, Gene Nicks, Douglas Harmon, Christene Draper, Conrad Parker.

Third Row: Billy Peacock, Harry Toney, Addison Warren, Oneida Allen, Richard Lindsley, Donna Mae Howard, Milton Gordon.

## FRESHMEN

# UNDERCLASSES





# DEMONSTRATION SCHOOL

Ruth Anderson

Billie Anne Apperson

John Bishop

Bobby Carlton

Ronald Caro

Charles Colquette

Tommy Davis

Patty Davis

Tillman Eby

Hilton Gillespie

Loren Gresham

Harry Haley

Edra Ann Hammond

Lewis Hassell

Jon Hassell

Sammy Holland

Meredith Howard

Patsy Jones

Betty Lou Lisanby

Nancy Joe Lisanby

Vira Nell Morris

Luvenna Ruth Murphy

Don McNabney

Sarah McNabney

John McNabney

Helen Paxton

Mary Lou Paxton

Mary Beth Richardson

Esther Ray Rodgers

Philip Rodgers

Marita Sue Slifer

Jackie Sue Smith

Glaphre Spencer

Howard Spruill

Billie Toney

Clyde Toney

Joan Vitatoe

## ASSISTANT TO THE PRINCIPAL

Helen Niesler

## PRACTICE TEACHERS

Mrs. Marshall Bowes

Mrs. M. H. Stocks

Geneva Miller

Mary Stovall



# SECOND QUARTER STUDENTS

ELLEANOR ABSTON

Junior, College

Nashville, Tennessee

FLAVIA BENBOW

College, Freshman

Spring Valley, Ohio

JOHN BISHOP

Special

Atlanta, Georgia

MARJORIE BOWES

College, Freshman

Ottawa, Illinois

BOB BUCHANAN

College, Freshman

Campbellsville Kentucky

JOSEPH BYERS

Unclassified

Huntingdon, Pennsylvania

RUTH CONNER

College, Freshman

Nashville, Tennessee

JAMES CROSSMAN

College, Freshman

Memphis, Tennessee

BERNICE DERR

College, Senior

Richmond, Virginia

HUGH FERGUSON

College, Freshman

Jefferson, North Carolina

EARL FOLEY

College, Freshman

Lexington, Kentucky

RUBY GEIGER

High School, Senior

Jacksonville, Florida

CALVIN GEORGE

College, Freshman

Beverly West Virginia

HILTON GILLESPIE

Junior Theological

Cairo, Georgia

ALTON JENKINS

College, Freshman

Cleveland, Mississippi

HALBERT JENKINS

College, Freshman

Cleveland, Mississippi

HARVEY JOHNSON

College, Freshman

Shawmut, Alabama

INA CLARA JONES

High School, Senior

Louisville, Kentucky

CURTIS KETTERMAN

Junior Theological

Frostburg Maryland

TED McNABNEY

High School, Freshman

Nashville, Tennessee

JEANETTE McNARON

High School, Freshman

East Gadsden Alabama

J. C. MARKHAM

College, Sophomore

Nashville Tennessee

JAMES MORGAN

College, Freshman

Sebring Florida

SHIRLEY PARDUE

High School, Sophomore

Port Arthur, Texas

GEORGE PRIVETT, JR.

College, Freshman

Mobile, Alabama

ANNE ROGERS

College, Freshman

Manassas, Georgia

J. W. ROSS

High School, Senior

Atlanta, Georgia

HARRY DOILE SMITH

Junior Theological

Clendenin, West Virginia

M. H. STOCKS

College, Freshman

Parrish, Alabama

JAMES TAYLOR

College Freshman

Akron, Ohio

J. R. VAUGHAN

Junior Theological

Nashville, Tennessee

WILLIAM WHITED

College, Freshman

Old Hickory, Tennessee





# SPECIAL STUDENTS



MATTIE BURRELL  
College, Freshman  
Sallis, Mississippi

ERMA CHENOWETH  
College, Freshman  
Elkins, West Virginia



WILLIAM DAVIS  
Junior Theological  
New Castle, Indiana

WALTON HURT  
Special  
Mt. Hope, West Virginia



ARNOLD MCKERLEY  
Special  
Jacksonville, Florida

LOVIE PENNYCUFF  
College, Freshman  
Seminary, Kentucky

JAMES WILLIAMS  
College, Freshman  
Ft. Myers, Florida





# ORGANIZATIONS





ALABAMA CLUB



CAROLINA CLUB





FLORIDA CLUB

GEORGIA CLUB





KENTUCKY CLUB



MISSISSIPPI CLUB





RAMBLERS CLUB



TENNESSEE CLUB





VIRGINIA CLUB

WEST VIRGINIA CLUB



# MINISTERIAL ASSOCIATION

The Ministerial Association is an organization composed of ministerial students, ministerial members of the faculty, and students preparing for any type of Christian service. Its purpose is to foster the spiritual life of the college and also to assist in carrying on a program of evangelism within the area directly touched by its membership.

For one week each quarter various members of the association furnish the chapel addresses.

In addition, the association sponsors a series of lectures on some phase of Christian work during the first quarter and another during the third quarter of each year.







# CHRISTIAN WORKERS ASSOCIATION



The Christian Workers Association is an organization of students who, as the name implies, are interested in Christian service, and not only are they interested but they actually engage in practical work from week to week. The various places regularly visited by students afford opportunities for valuable experience and at the same time receive much good from the singing, preaching, and testimonies of earnest and sincere young people. With a message to give, and a heart to give that message they go forth with the attitude that the world is in need, and Christ can meet that need. Their aim is ours, to spread scriptural holiness around the world.





# STUDENTS' WIVES ASSOCIATION

## OFFICERS

MRS. DOROTHY CONRAD

MRS. LENA BAUN

MRS. VIRGINIA UNDERWOOD

MISS AMY PERSON

President

Secretary

Treasurer

Sponsor

The purpose of the Students' Wives Association is to give to the wives of ministerial students a sampling of college life. It helps them to prepare for the future more fully when they will have to face those inevitable things that a preacher's wife cannot escape.

One night each week they meet to study the Bible, Parliamentary Law, and to participate in business meetings. There are also special speakers on topics that are current and helpful.





# TREV-ECHOES

## STAFF

GRACE EBY . . . . . Editor

HUBERT BANKSTON . . . . . Business Manager

D. H. SPENCER . . . . . Faculty Advisor

Trev-Echoes, a student publication, was organized under the sponsorship of the sophomore class of 1944-45. It proved so popular that it has become one of the regular student body activities and is now published under the auspices of the student advisory council. It reflects the current thought and life of the college.

The Staff celebrates the third anniversary of Trev-Echoes







#### STAFF

MADELYN HOWE ..... Secretary  
 WILLENE ROSA ..... Junior Class Representative  
 ROBERT ALLEN ..... Freshman Class Representative  
 EUGENE CAIN ..... High School Representative  
 GRANT BROWNING ..... High School Representative  
 HENRY COOPER ..... Junior Theological Representative

The Student Advisory Council is a group of seven students whose duty it is to promote the best interest of the student and of the college in general. Among other functions, it serves as a kind of liaison body between students and faculty. A president and secretary for the council are elected by the students with faculty approval, at an annual spring election; other members, representing the various classes and departments, are elected early in the fall quarter.



SARAH SPRUILL  
President

# STUDENT COUNCIL





ROBERT GRAY  
Editor

The DARDA is the college annual, published by a staff composed of students representing all major organizations of the institution.

# DARDA STAFF



ED COX  
Business Manager

CHARLES HANEY, Associate Editor; RAY DUNNING, Associate Business Manager; KENNETH SLIFER, Sales Manager; GENEVIEVE McMACKIN, Typist; ANNABELL WARD, Typist; DR. L. P. GRESHAM, Faculty Advisor.











## THE CHORUS

The chorus is a vital part of the school. It consists of both boys and girls who blend their voices together for the glory of God. They are active in presenting programs, recitals, and various numbers. Prof. J. D. Irwin has done a good piece of work in directing the chorus this year.

## A CAPPELLA CHOIR

A rather new thing on the campus, but a welcomed one, is the A Cappella Choir. The Choir, even in its infancy, has proven a good addition to Trevecca Nazarene College. They have participated in several school occasions, and some of the city churches. Prof. J. D. Irwin has accomplished much with his skill in directing the Choir.





# SPECIAL GROUPS

There will always be singing as long as Trevecca students are together. Some will be trios, some duets, some solos, but however large the group or small, the individual has a "song to sing." These groups have sung in revival meetings, have toured the Southeastern Educational Zone in the interest of Trevecca Nazarene College, have filled a place in the musical life of the school, and in all of this have proven inspirational.



THE GLAD TIDINGS TRIO IS TRADITIONAL  
(Composed of Annabell Ward, Marie Peery, Pauline Taylor)



## ANOTHER GOOD TRIO

(Caroline Hall, Ruth Daugherty, Charlotte Hampton)

Ray Dunning Sings—Miss Paschall at the Piano







**OFFICERS OF THE SPEECH CLUB**

Ballard, Bankston, Conrad, Cooper,  
Miss Myrtle Hooper, Teacher

# SPEECH CLUB

moted, interest in debating teams, orations, pulpit oratory, and extemporaneous speaking all have mounted to a high peak. After all, of all people who should try to improve their speech, why shouldn't it be the preachers. "And what some preachers we have," Miss Hooper would say. All is not dependent on the message, but there must be some attention given to the delivery. A big, and hard task has been Miss Hooper's, but she has tackled it with the spirit of a conqueror. We have all been impressed with the main views of the club; those to promote and improve the student's speaking ability.

The Speech Club has not been in existence but for a short while, but during that time many things have been accomplished that have proven beneficial to Trevecca Nazarene College. A program of better speech has been pro-





Summer School  
Faculty



## TREVECCA SUMMER SCHOOL

Trevecca Nazarene College is endeavoring to keep abreast of the needs of its constituency by increasing its offerings and by rendering year by year a more efficient service. The summer quarter, consisting of two six-weeks sessions, is a practical expression of this endeavor.

An effort is made by the college administration to make the summer sessions an integral part of the regular college program. Provision is made for college, junior theological, and high school students to continue their studies toward graduation from their respective curricula, while high school graduates may begin their college work with the prospect of securing degrees in three years and two additional summers. Public school teach-

ers may meet requirements for certification or for renewal of certificates.

In the summer quarter instruction is given in most of the regular departments of the college, and in the junior theological and high school curricula. Courses are offered to meet the various needs of students. College freshmen may get a sufficient program of classes to complete a first quarter of college work without interfering seriously with their normal schedule in the regular term following. Credits earned will apply toward the satisfaction of requirements for diplomas, certificates, and degrees awarded by the college. Requirements for teacher certification, for the ministerial course of study, and for Christian service training may also be met.





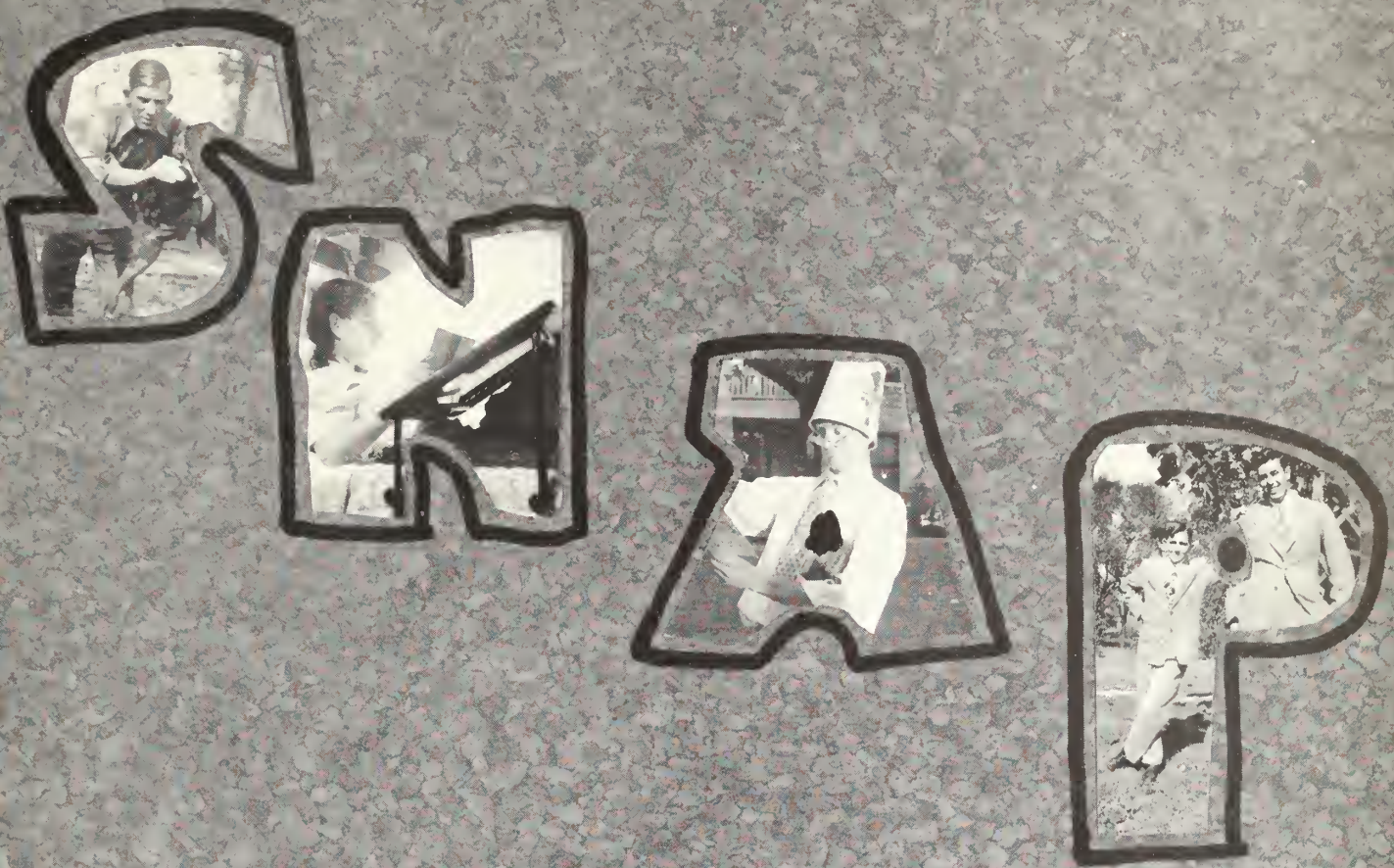
The Summer School Student Body

# TREVECCA SUMMER SCHOOL

Miss Paschall Teaches a Class on the Lawn











# Couples



?

?

?

?

?







*Married*



*Couples?*

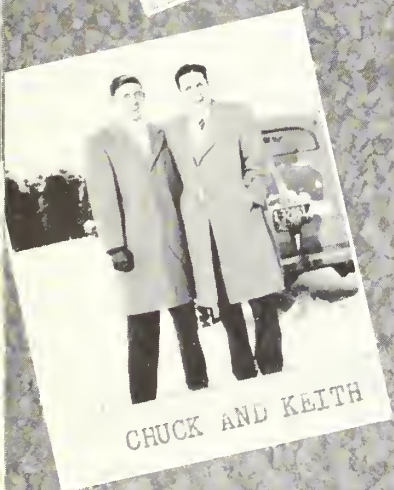




WHAT SMILES



HUM--WRONG KEY



CHUCK AND KEITH



IT WOULD PAY TO LOOK



THE DEAN'S FAMILY



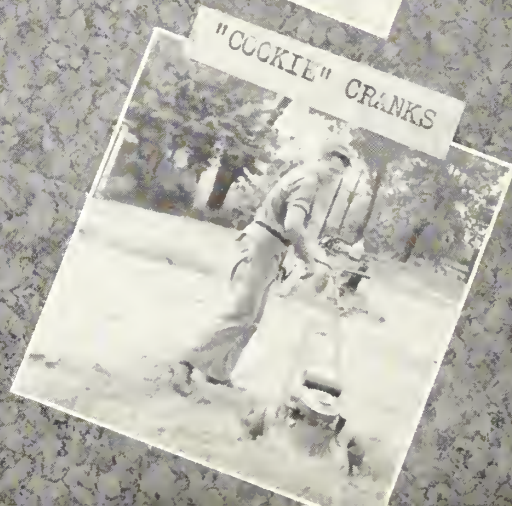
ABOVE ALL---



THE EDITOR

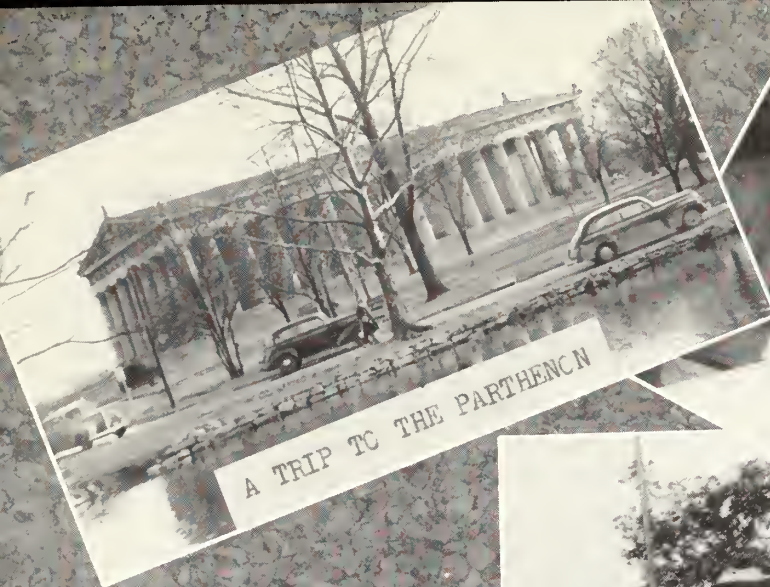


A COLD SHOULDER



"COOKIE" CRANKS





A TRIP TO THE PARTHENCN



WHAT? THEY EAT, TOO?



TWC OF A KIND



WAS THAT BUILT FOR TWC?



BYE !



WHAT? NO SLIFER?



A WHEELBARROW FULL





STILL SERVING



GOING HOME?



IT WORKS??



DON'T GET FRESH



THE KITCHEN SEXTET



WHAT? NO HOMER



FLASH! IT'S YATES



IN THE BRUSH



WHAT? NO STUDYING



THE CVERSEER OVERSAW



# ADVERTISEMENT



"HOLINESS BECOMETH THINE HOUSE O LORD FOREVER"

# INGLEWOOD CHURCH OF THE NAZARENE

Gallatin Road at Sunnymeade Drive

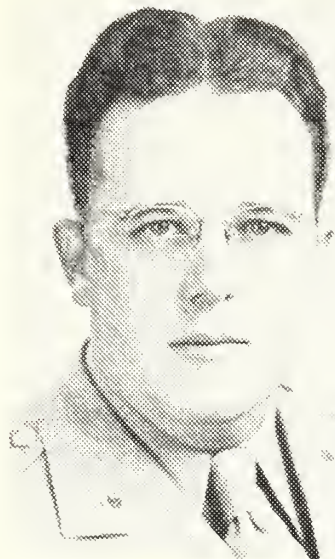
NASHVILLE, TENNESSEE



Pastor ..... REV. D. K. WACHTEL  
Director of Music ..... PROF. HILMAN BARNARD  
Orchestra ..... MISS JOHNNY JERNIGAN  
Sunday School Superintendent ..... MR. W. B. APPLE  
W. F. M. S. President ..... MRS. N. E. CANNON  
N. Y. P. S. President ..... MR. JIMMY TATE

We welcome any opportunity to serve TREVECCA, her faculty, and her student body.





LLOYD W. HAIL  
Pastor

# CHURCH OF THE NAZARENE

FAIRMONT, WEST VA.



RAYMOND F. HANEY

Sunday School Supt.

BERNARD BOYERS

N. Y. P. S. Pres.

MRS. F. F. MCGIRR

W. F. M. S. Pres.

Boosters For T. N. C.



"The Friendly Church In The Friendly City"



# THE FLORIDA DISTRICT

AND



JOHN L. KNIGHT  
District Superintendent

*Congratulations Trevecca*

ADMINISTRATION • FACULTY • STUDENTS

You're Ours—We're Yours



# CHURCH OF THE NAZARENE

249 Broadway

IRVINE, KENTUCKY



REV. J. B. ROOT



JACK HAMILTON

NETTIE HAMILTON . . . . . N. Y. P. S. President  
MRS. T. J. REYNOLDS . . . . . W. F. M. S. President  
PATSY WEST . . . . . Hi. N. Y. Supervisor  
MRS. J. B. ROOT . . . . . Junior Leader

*A Better School for Better Churches*



# FIRST CHURCH OF THE NAZARENE

510 Woodland Street

NASHVILLE, TENNESSEE

•

## H. H. WISE

Minister

The present pastor is closing his twenty-sixth year as pastor of this church.

•

### TREVECCA STUDENTS ARE WELCOME

•

The Church with a heart interest in humanity.



THE PROPOSED NEW CHURCH



# MISSISSIPPI DISTRICT

## CHURCH OF THE NAZARENE

REV. CECIL KNIPPERS . . . . . District Superintendent  
REV. L. S. MILLER . . . . . Chairman, Church Schools  
REV. J. BLANTON COOK . . . . . N.Y.P.S. President  
MRS. THELMA THARPE . . . . . W.F.M.S. President  
REV. V. W. SMITH, JR. . . . . District Secretary-Treasurer



*We Invite You*

### DISTRICT N. Y. P. S. CAMP AND INSTITUTE

Percy Quin State Park, McComb, Mississippi  
July 19-24

### SARTINSVILLE CAMP MEETING

Sartinsville, Mississippi  
July 30—August 8

### DISTRICT ASSEMBLY

October 6-7

F O R W A R D   W I T H   T R E V E C C A



# FIRST CHURCH OF THE NAZARENE

LOUISVILLE, KENTUCKY

"The Friendly Church"



REV. ORVILLE L. MAISH  
Pastor



24TH AND HOWARD STREETS

When you are in Louisville, worship with us.



# GEORGIA DISTRICT

## ADVISORY BOARD

H. J. EASON

J. F. CHILTON

T. A. BURTON

G. L. THOMPSON

## OFFICERS

W. LEE GANN . . . . . Secretary

BRUCE B. HALL . . . . . Treasurer

Boosting a Greater T. N. C.



REV. MACK ANDERSON  
District Superintendent

## DEPARTMENT HEADS

W. H. DAVIS . . . . . Chairman Church School Board

MRS. IRVIN KENNEDY . . . . . President W. F. M. S.

T. A. BURTON . . . . . President N.Y.P.S.

## CAMP MEETING

July 22—August 1, Adrian, Ga.



District Parsonage



# FIRST CHURCH OF THE NAZARENE

1601 N. 21st Street  
RICHMOND, VIRGINIA



A. D. HOLT, Pastor

## SERVICES

SUNDAY SCHOOL . . . . . 9:45 A. M.  
PREACHING . . . . . 11:00 A. M. and 7:45 P. M.  
N. Y. P. S. . . . . 7:00 P. M.  
PRAYER SERVICE . . . . . Wednesday—8:00 P. M.

COMPLIMENTS

FROM THE

# CHURCH OF THE NAZARENE

748 Benson Avenue  
FRANKFORT, KENTUCKY



REV. W. P. WILHOYTE  
PASTOR

COMPLIMENTS

OF

# FIRST CHURCH OF THE NAZARENE

NEWPORT, KENTUCKY

Seventh St., at Putnam

REV. R. L. IHRIG

Pastor

Parsonage—36 S. Grand Ave., Ft. Thomas, Ky.

Phone HE 4146





REV. MISS LEILA DELL MILLER  
Evangelist

★

*A Friend of*  
*J. N. C.*

★

"We Specialize in Friendliness"

## CHURCH OF THE NAZARENE

LANETT, ALABAMA

REV. WALLACE BELL, Pastor

DOUGLAS MITCHUM, S. S. Supt.

## SOUTH SIDE CHURCH OF THE NAZARENE

704 South Parkway East

J. E. BECKUM  
Pastor

1436 Taylor Street

Phone 9-3580

MEMPHIS, TENNESSEE

We invite you to visit our church when in  
our city.

Friendliness our motto—You are welcome.



CONGRATULATIONS TO CLASS OF 1948

FROM

# WEST VIRGINIA DISTRICT

CHURCH OF THE NAZARENE

**Trevecca Trustees**

EDWARD C. ONEY  
ROY T. McKINNEY  
LLOYD W. HAIL  
EARL SHULTZ  
DENNIS E. WYRICK



**District Advisory Board**

EDWARD C. ONEY  
EARL SHULTZ  
RALPH SCHURMAN  
GEORGE ARMSTRONG  
CLYDE PRITT

**District Superintendent**

EDWARD C. ONEY  
5008 Virginia Ave.  
Charleston 4, W. Va.

**DISTRICT CENTER**

Nazarene Camp Grounds, Summersville, W. Va.

**THIRD ANNUAL DISTRICT CAMP**

July 1st-11th

**SECOND ANNUAL N. Y. P. S. INSTITUTE**

August 23rd-27th



COMPLIMENTS  
OF  
**ALABAMA DISTRICT**



OTTO STUCKI  
District Superintendent

A. P. PONCE  
District N. Y. P. S. Pres.

We are at your service in every time of  
need.

**THE  
CHURCH OF THE NAZARENE**

V. W. CHANDLER, Pastor

"A good place to go to church"

P. O. Box 823

Telephone 570-W

115 W. Brown Street Lake City, Florida

**FLOYD  
CHURCH OF THE NAZARENE**

FLOYD, VIRGINIA

EARNEST W. McDOWELL  
Pastor

"The young church with the old Gospel"

"A Live Church With a Living Message"

**FIRST CHURCH  
OF THE NAZARENE**

2501 Northwest Seventh Street

MIAMI (35), FLORIDA

CHESTER A. SMITH, Pastor

727 N.W. 26th Avenue

Telephone 48-3114



COMPLIMENTS  
OF  
CENTER  
CHURCH OF THE NAZARENE

W. A. LAYFIELD  
Pastor

Naval Separation Center  
NASHVILLE, TENNESSEE

FIRST  
CHURCH OF THE NAZARENE

PRINCETON, FLORIDA

•  
C. F. CRAUSWELL  
Pastor

CHURCH OF THE NAZARENE  
MAN, WEST VIRGINIA

JOHN R. BROWNING . . . . . Pastor  
FRANCES JENNINGS . . . . . Sunday School Superintendent  
DOYLE D. "BILL" ROBINSON . . . . . N. Y. P. S. President  
MRS. JOHN R. BROWNING . . . . . W. F. M. S. President

We Support Trevecca Nazarene College with

—OUR FINANCES  
—OUR PRAYERS  
—OUR YOUNG PEOPLE

CHURCH  
OF THE NAZARENE

SHAWMUT, ALABAMA

"The singing church in the valley."



L. E. HUMRICH  
Minister



•

COMPLIMENTS  
OF  
**OLD HICKORY CHURCH**

CARL BROWN  
Pastor

7th and Jones

OLD HICKORY, TENNESSEE

•

The Gospel in  
**SERMON • SONG • ART**



EVANGELIST CLYDE B. RODGERS  
Care Trevecca Nazarene College  
Nashville 4, Tennessee

# THIRD CHURCH OF THE NAZARENE

1622 10th Avenue, North  
NASHVILLE 8, TENNESSEE

MILTON TURNEY  
Pastor

MR. JOHN DIX  
S. S. Superintendent  
MRS. LUNA BILBRA  
W. F. M. S.  
MISS VIVIAN GRAVES  
N. Y. P. S.  
REV. W. A. JORDAN  
Hi. N. Y.  
REV. AMOS T. EBY  
Choir Director

Sunday School, 9:30  
Morning Worship, 10:45  
N. Y. P. S., 6:30  
Hi. N. Y., 6:30  
Evening Service, 7:30  
Midweek—Wednesday, 7:30

**WELCOME—WHEN IN NASHVILLE WORSHIP WITH US**



## CHURCH OF THE NAZARENE

PARIS, TENNESSEE

Corner Porter and Blythe Sts.

REV. J. H. DEAL

Pastor

"The Friendly Church"

COMPLIMENTS

OF

## DONELSON NAZARENE CHURCH

WILLIAM FIGHTMASTER

Pastor

## WOODBINE CHURCH OF THE NAZARENE

2710 Nolensville Road

NASHVILLE, TENNESSEE

HAROLD TINGLE . . . . . Pastor

JASPER JENKINS . . . . . N. Y. P. S. President

LEROY RHYNE . . . . . Sunday School Superintendent

MRS. G. J. PRATT, SR. . . . . W. F. M. S. President

The Church with a welcome to Trevecca College

COMPLIMENTS

OF

## COLLEGE HILL CHURCH

•

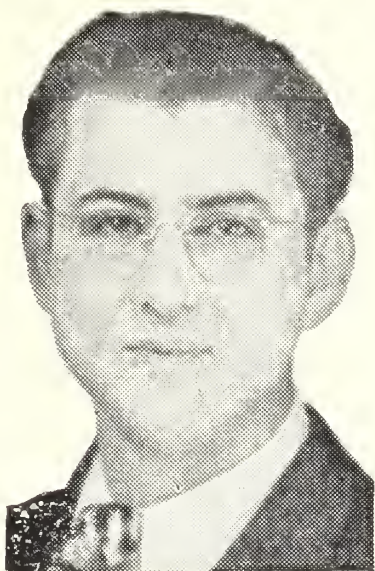
A. K. BRACKEN

Pastor

Lester at Hart St.

Nashville 4, Tenn.





# CAROLINA DISTRICT

C. E. SHUMAKE  
District Superintendent

## GOALS FOR 1948

- 5 New Churches
- 20% Increase in Membership
- 25% Increase in S. S. Attendance
- A Dollar Per Member For Trevecca

H. C. THOMAS

Church Sch. Chair.

MRS. C. E. SHUMAKE

President, W.F.M.S.

JOHN STEPHENSON

Treasurer

REEFORD CHANEY

Secretary

*Slogan — "Carolina For Christ"*

## THE N. Y. P. S. GREET'S YOU

### DISTRICT OFFICERS

District President

REEFORD CHANEY

1st V. President

C. E. MCKENZIE

H. S. Sup.

MAGDALENE CRUMPLER

Jun. Sup.

MRS. H. E. CARLYLE

Secretary

MRS. H. C. THOMAS

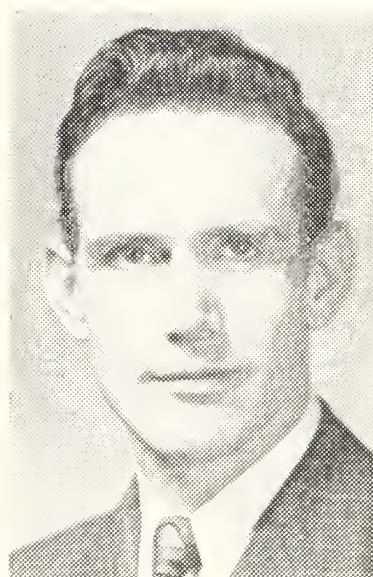
Treasurer

VERNON JONES

Special Project, 1948

YOUTH CAMP AND INSTITUTE

July 5-11

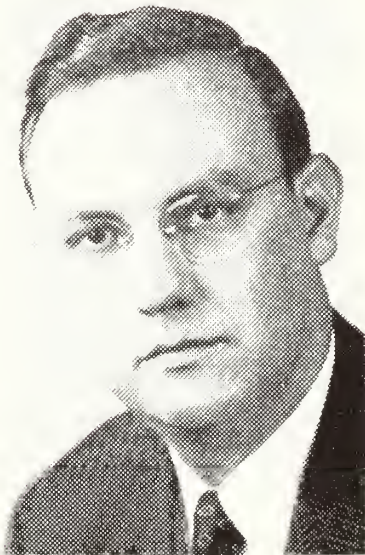




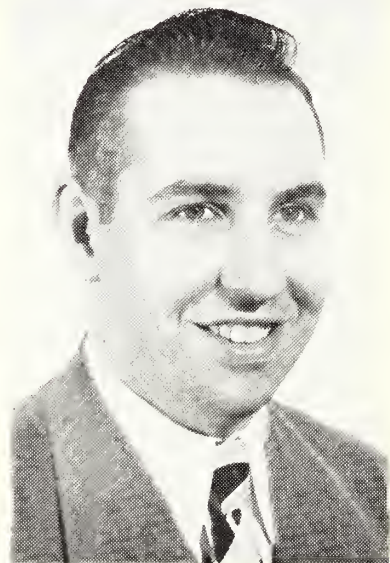
# FIRST CHURCH OF THE NAZARENE

Central and Florida Streets

CHARLESTON, WEST VIRGINIA



EARL SHULTZ  
Minister



DAN F. ARMSTRONG  
Music Director

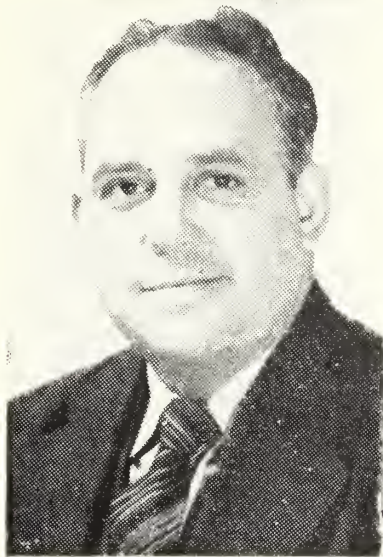
GEORGE ARMSTRONG . . . . . Sunday School Superintendent  
Church Secretary

MRS. MAUDE TAYLOR . . . . . Church Treasurer

MRS. BERTHA BOWLES . . . . . W. F. M. S. President

MRS. JESSIE WOOFER . . . . . N. Y. P. S. President





W. H. DAVIS  
Minister

## FIRST CHURCH OF THE NAZARENE

125 Moreland Ave., S. E.  
ATLANTA, GEORGIA

Atlanta students attending Trevecca:

MISS CHARLOTTE HAMPTON

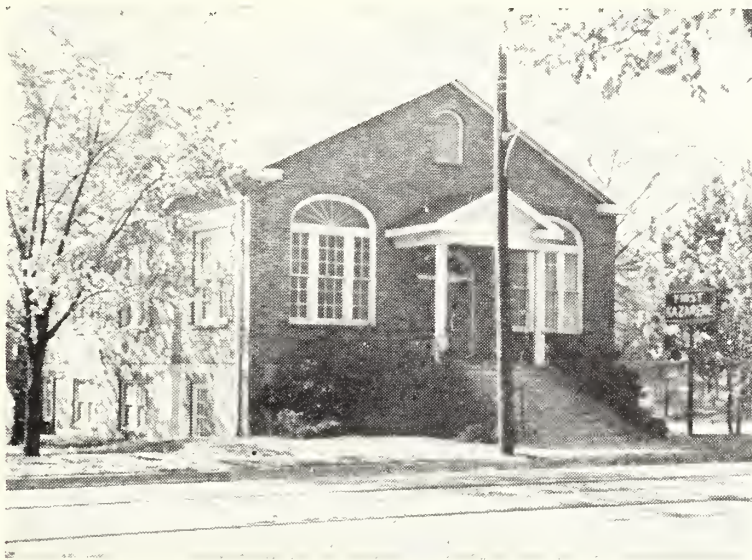
MR. LEWIS PENNINGTON

MR. JOHN BISHOP

MISS CORA NELL HUDLESTON

MR. J. W. ROSS

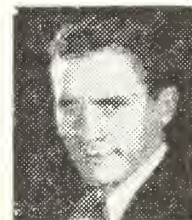
"When in Atlanta, visit First Church where  
everyone is friendly."



## BIRMINGHAM FIRST CHURCH

congratulates

TREVECCA



DALLAS BAGGETT  
Pastor

"SALUTING OUR OWN YOUTH ON THE CAMPUS"

Clara Bohler, Ed Cox, Pauline Bumpus, Martha Cockrell.



A Happy, Singing, Friendly Church

## BETHEL CHURCH OF THE NAZARENE

409 Trinity Lane  
NASHVILLE, TENNESSEE

B. G. WIGGS, Pastor

Residence—432 Trinity Lane

Phone 2-2929

### FIRST CHURCH OF THE NAZARENE

Burlington, North Carolina  
C. W. ELKINS, Pastor

### NASHVILLE'S MOST COMPLETE BOOK STORE

Fiction, Non-fiction, Business and Technical,  
Religious, Devotional, Bibles, Gifts, Sta-  
tionary and Novelties.

### CHURCH OF THE NAZARENE

LINDON L. SCALES, Pastor  
West Madison Street      Russellville, Alabama

### THE METHODIST PUBLISHING HOUSE

Telephone 6-2641      810 Broadway

## FIRST CHURCH OF THE NAZARENE

21st and N. Troy Sts.  
ARLINGTON, VIRGINIA  
FLOYD N. BRADLEY, Pastor



When in Washington, D. C. cross the river and visit us.



# VIRGINIA DISTRICT

## CHURCH OF THE NAZARENE



REV. JAMES H. GARRISON  
District Superintendent



MRS. C. E. WINSLOW  
W.F.M.S. President

JOHN E. COMPTON  
N.Y.P.S. President



REV. VERNON W. LITRELL  
Chairman Church School Board



# KENTUCKY DISTRICT

CHURCH OF THE NAZARENE



REV. L. T. WELLS  
District Superintendent



MRS. L. T. WELLS  
W. F. M. S. President



REV. G. A. GOUGH  
Chairman Church School Board



REV. KLINE DICKERSON  
N. Y. P. S. President



COMPLIMENTS  
OF  
**CHURCH OF THE NAZARENE**  
BELLE, WEST VIRGINIA

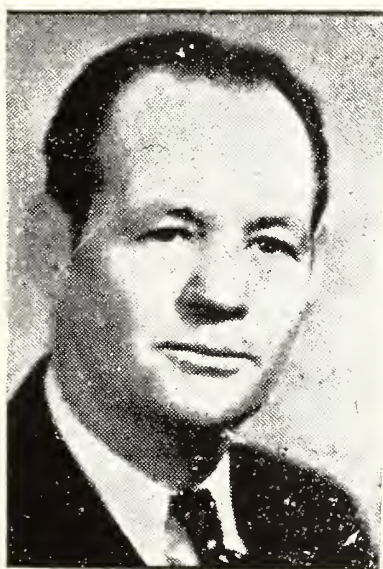
EUGENE SANFORD . . . . . Sunday School Superintendent  
JACK MILEY . . . . . N.Y.P.S. President  
MRS. CATHERINE BOOTH . . . . . W.F.M.S. President

We Believe in T. N. C.



H. HARVEY HENDERSHOT  
Minister

**CHURCH OF THE NAZARENE**  
TITUSVILLE, FLORIDA



ROBERT H. SPEAR  
Pastor

"One time student of Trevecca"

THANKS TO  
  
OUR  
  
FRIENDS

PATRONIZE OUR  
ADVERTISERS

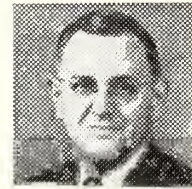


# GRACE CHURCH OF THE NAZARENE

2518 Gallatin Road  
NASHVILLE (6) TENNESSEE



S. W. STRICKLAND  
Pastor



B. M. SMOTHERMAN  
S.S. Superintendent

I know of a church at the edge of the town  
Where heaven and earth seem to blend;  
For within the wide door waits the Christ we adore  
With a blessing for all who attend.

Then come to the church at the edge of the town  
And join with the worshiping throng,  
And tomorrow you'll face with a confident grace  
And a faith that is steadfast and strong.



J. D. IRWIN	Music Director
MRS. EDITH WEAVER	President W.F.M.S.
MISS RUBY SHELTON	President, Esther Carson Winans
MRS. MARY SPENCER	President Y.W.F.M.S.
C. M. PEEPLES	President N.Y.P.S.



# CAVALRY CHURCH OF THE NAZARENE

Third Avenue South and Ash Street  
NASHVILLE 10, TENNESSEE

"The Church With a Heart Interest in Humanity"



REV. M. E. REDFORD  
Pastor



We Appreciate Trevecca and Her Students

WHEN YOU ARE IN NASHVILLE, WE WANT YOU TO WORSHIP WITH US

A Warm Welcome Awaits You!



# FIRST CHURCH OF THE NAZARENE

MOBILE, ALABAMA

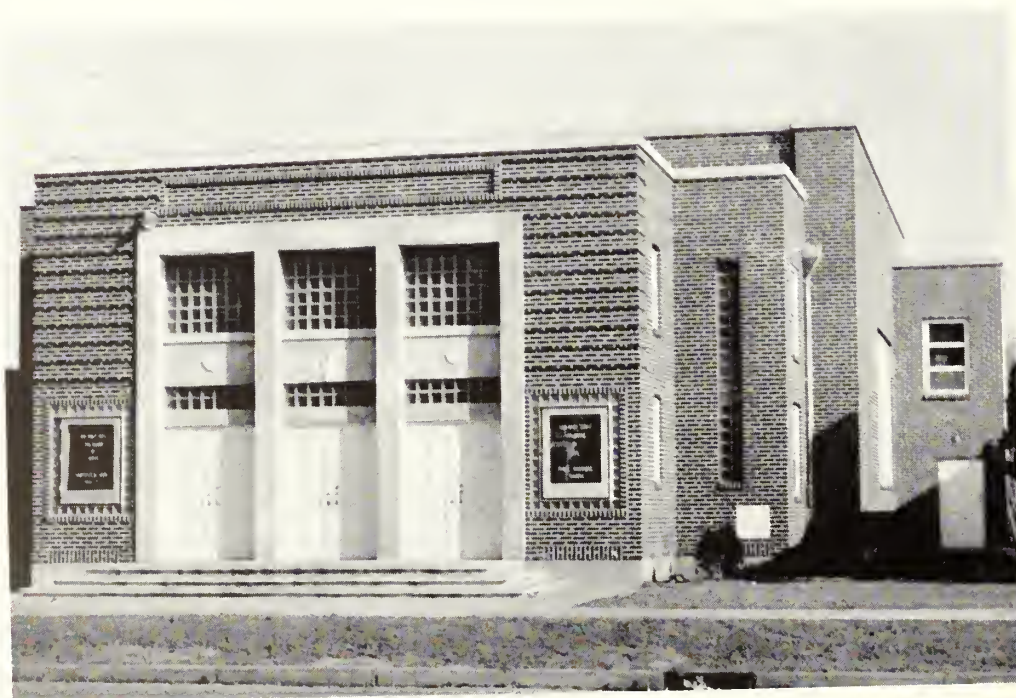
JOHN OWENS  
Sunday School Superintendent

MRS. W. R. DUNCAN  
N.Y.P.S. President

MISS SUSIE WILCOX  
W.F.M.S. President



REV. L. B. HICKS  
Pastor





**M. E. DERRYBERRY  
AND  
SPOT CASH COMPANY**

**Wholesale Grocers**

NASHVILLE, TENN.

**DAVID JACKSON  
& SON**

**TEXACO PRODUCTS**

337 Murfreesboro Road      Ph. 5-8636

Compliments of  
**HI-HO RESTAURANT**

Compliments of  
**ROSA'S BARBER SHOP**  
ADRIAN ROSA—Barber  
Located on College Campus

**G. C. THOMPSON LUMBER CO.**

**Rough and Dressed Lumber**

ROOFING • PAINTS • INSULATION BOARD

400 Murfreesboro Road

Telephone 6-1261

**HAIL'S COLLEGE GRILL**



Located At The Foot of The Hill

Owned and Operated by DAVID F. HAIL, Student



GREETINGS

FROM

**THE N. Y. P. S.**

FITZGERALD, GEORGIA

CURTIS THOMPSON, President

COMPLIMENTS

OF

**LIBERTY PHARMACY**

S. R. LUSTER, Prop.

Phone 5-8489

149 Murfreesboro Rd.

Nashville, Tenn.

**NICHOLSON HATTERS**

228 Fourth Ave., N.

(Opposite Arcade)

Telephone 6-9211

THOROUGH

PROGRESSIVE

DEPENDABLE

**NASHVILLE, BUSINESS  
COLLEGE**

**APPEALING TO THOSE WHO  
WANT THE BEST**

Y. M. C. A. Building

NASHVILLE, TENNESSEE

Congratulations to the 1948 DARDA Staff

*Wiles—Hood*

**A** NYTHING  
NYTIME  
NYWHERE

6-5383

STEVE E. HOOD

27 Arcade—Nashville 3, Tenn.

Official Photographer for

**DARDA**



# LOGAN'S SUPER MARKET

Fine Foods, Courteous Service, Fair Prices

There is a Logan Super Market  
Near You.

Offices and Warehouse, 312 Jefferson Street

1. 3701 GALLATIN RD.
2. LEBANON RD., DONELSON
3. 363 MURFREESBORO RD.
4. 1224 MERIDIAN ST.
5. 2608 FRANKLIN RD.
6. 2624 WEST END AVE.
7. 2707 12TH AVE., SOUTH
8. 407 GALLATIN ROAD



COMPLIMENTS

OF

## PURITY DAIRIES,

Incorporated

Nashville's Finest

Milk



# ALAMO PLAZA HOTEL COURTS



*The Highway's Finest*



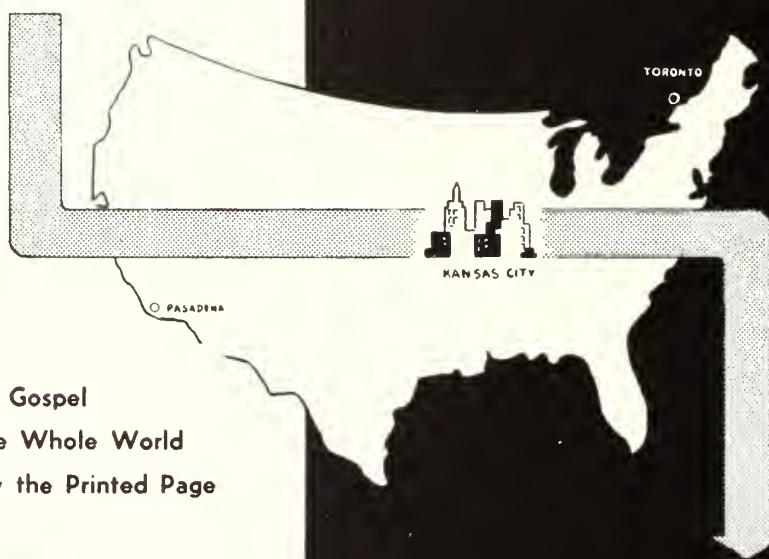
Highways 70-S and 41

NASHVILLE, TENNESSEE

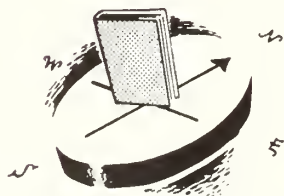


# YOUR SHOPPING CENTER

SHOP BY MAIL  
"The Easy Way"



- The Full Gospel
- To the Whole World
- By the Printed Page



SERVICE

YOUR

Nazarene Publishing House  
and its two branches are as  
close to you as the nearest  
MAIL BOX

## NAZARENE PUBLISHING HOUSE

2923 Troost Ave., Box 527, Kansas City 10, Mo

102 East Colorado St.  
Pasadena 1, California

1592 Bloor St West  
Toronto, Ontario



World's Largest Publishers

THIS BOOK DESIGNED AND PRINTED BY

*Benson*

PRINTING COMPANY ☆ NASHVILLE

of College Annuals















