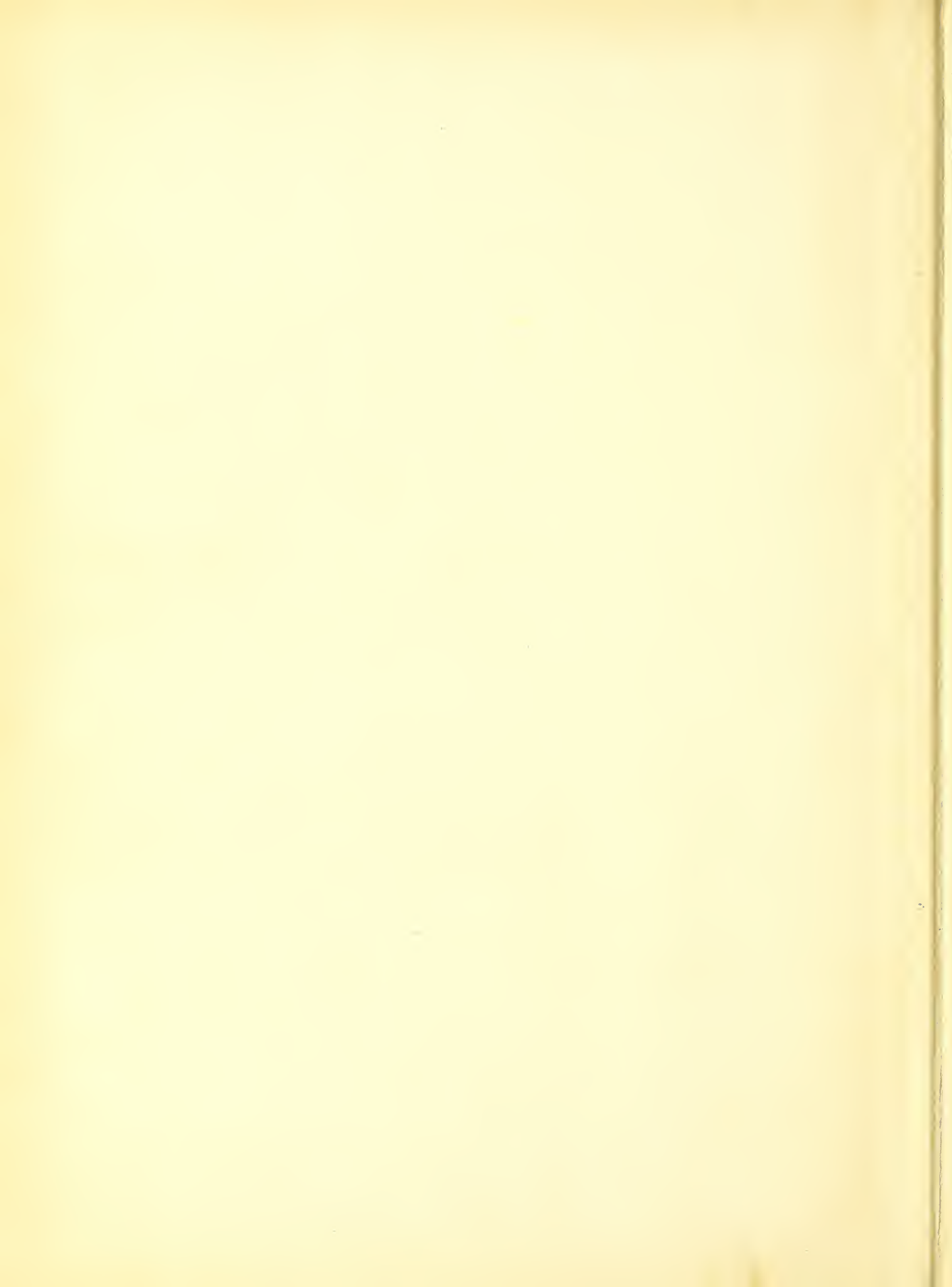


Special  
LD  
5356  
.T75  
1943

1943

THE DARDA





Digitized by the Internet Archive  
in 2014

<https://archive.org/details/darda1943trev>



TREVECCA COLLEGE LIBRARY

# TREVECCA

THERE'S SOMETHING ABOUT  
THE PLACE WE LOVE ★ ★

---

CLAUDE GALLOWAY, EDITOR • • • HOMER ADAMS, BUSINESS MANAGER



# IT'S THE FRIENDSHIPS

TRUE FRIENDSHIPS FORM THROUGH PATIENT GROWTH; THEY ARE NOURISHED OF ADVERSITY; THEIR ESSENCE "MEN OF INFERIOR INTELLECT CAN TO THEM A SILENT COLLEAGUE. WE HERE WOULD FOSTER THESE THEIR NURTURE EACH ESSENTIAL ELEMENT: SLOWNESS, SHOCKS,

---



# TRUE ★ ★

OFTTIMES ON THE SHOCKS  
NEVER TASTE"; GOD IS ALWAYS  
TENDER PLANTS—GIVING FOR  
INTELLECTUAL STIMULI, GOD.



THE GODLY COUNSEL  
**Of Our Spirit Filled Faculty**







Education is the process of producing changes in human personality. To achieve this end requires proper direction. Trevecca believes that the best education implies the spiritual aspect of life, a process that makes one an efficient, clean, loyal, true citizen of the world and a humble servant of God and man.





IT'S THE ★ ★  
DEVOTION  
TO GOD ★ ★  
COUNTRY

---

---



Treveccans feel it important to be faithful to their country as well as to their God. Many have proved their devotion by entering the armed services in defense of those principles upon which it was founded. We want to be examples of loyalty to the country giving us the freedom of worship we so deeply enjoy.





THE WILL TO AC  
High Scholastic Atta



Aptitude, attitude, and  
perseverance make a won-  
derful combination.

**BELIEVE**  
**in me nt**



# THE WILL TO WORK AND **E a r n O u r W a y**

"He that learneth to work well when he is young shall have plenty when he is old."

"He that doeth small things well shall be given greater things to do."

At Trevecca much emphasis is placed on the values of work as expressed in these proverbs until they have become a part of our thinking, and abundant opportunities are offered to put them into practice.







"Go ye—and preach the gospel to every  
creature."



# THE PASSION

## To Serve Mankind

Trevecca students are on the alert for a chance to win the lost to Christ and help others to get a better knowledge of Him.

Some of them bring in reports of Christian work done in jails, work-houses, and hospitals, and of personal work in homes and on the streets.

Those who are called into the ministry preach in missions, chapels, churches or wherever occasion affords throughout the area nearby.

Sometimes a student, peculiarly fitted for such an experience, preaches on the train or bus. People usually give earnest and respectful attention, and the salvation of a soul is sometimes the result.

These things add thrill and zest to life at Trevecca.



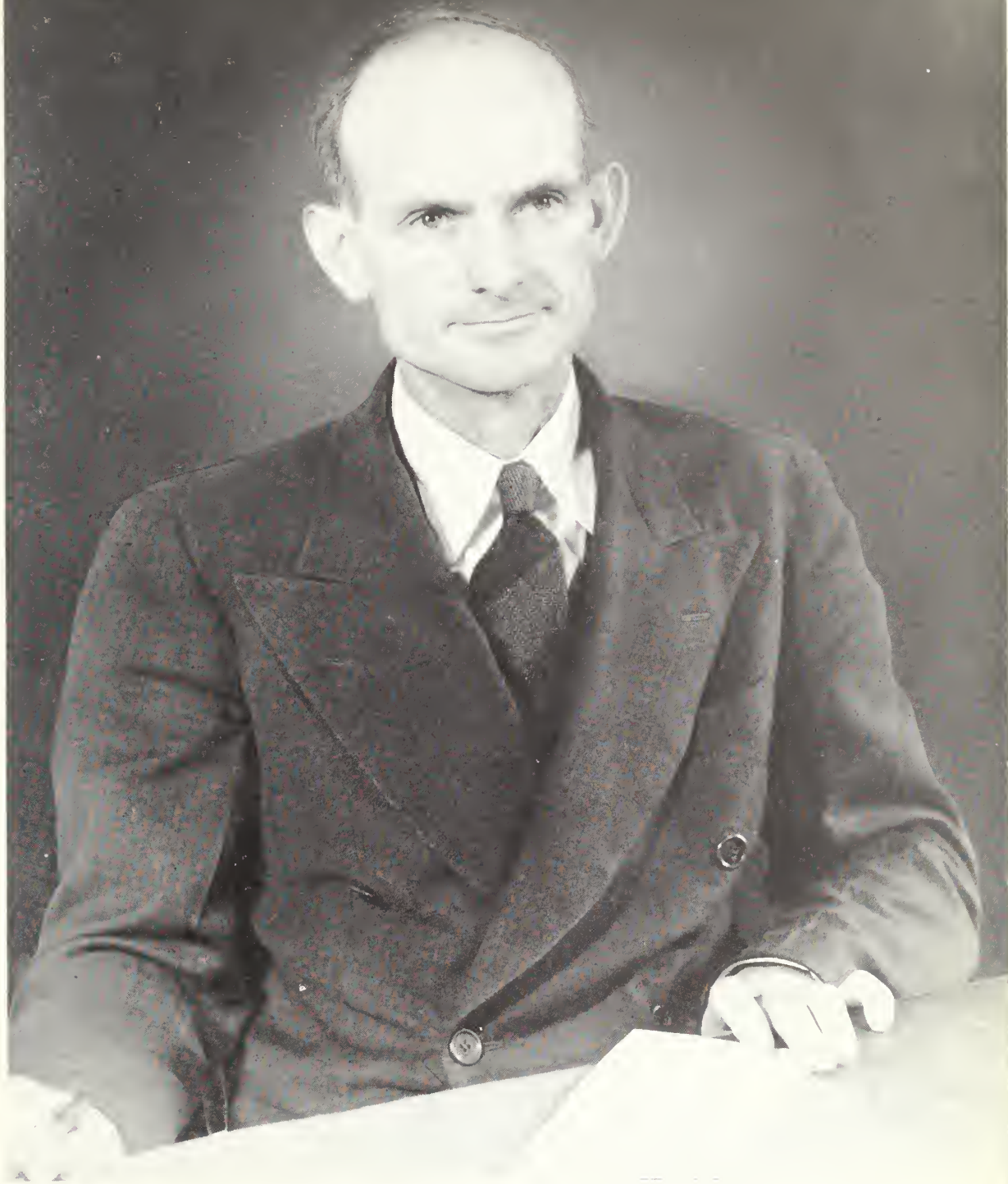
THIS IS OUR  
ALMA MATER  
T R E V E C C A

N A Z A R E N E C O L L E G E  
N A S H V I L L E, T E N N E S S E E  
A S T O R Y I N W O R D A N D P I C T U R E  
C O N C E R N I N G T H E F A C U L T Y A N D  
S T U D E N T S P R E S E N T E D B Y T H I S, T H E

1 9 4 3 D A R D A

P U B L I S H E D A N N U A L L Y B Y T H E  
S T U D E N T B O D Y I N A L I M I T E D E D I T I O N

---



# PRESIDENT

A . B . M A C K E Y



Dr. Mackey, intensely interested in building strong Christian character, has a keen insight into youth's problems. A unique personality, a natural philosopher, a Christian gentleman, his exemplary Christ-likeness inspires students to serve God and humanity.

# DEPARTMENTAL HEADS

The men who serve as heads of the three departments, and the college pastor, are recognized as leaders in their fields by faculty and students alike. They

have served faithfully, and we appreciate their labors in our behalf.

May God reward them for their efforts.



A. L. SNELL  
Ph.B., B.S., M.A.  
Dean of College

M. E. REDFORD  
B.S., M.A., B.D.  
Dean of School of  
Religion



A. K. BRACKEN  
M.A., D.D.  
College Pastor

L. PAUL GRESHAM  
A.B., M.A.  
Principal of High  
School



# FACULTY AND STUDENTS

# FACULTY

**H. H. WISE**

Chairman, Board of Trustees  
Bible



**SADIE AGNEW JOHNSON**

A.B., M.A.  
Mathematics, Theology



**LILA THRASHER MACKEY**

A.B., M.A.  
Modern Languages, History

**AMY L. PERSON**

A.B., M.A.  
Registrar  
English, Bible  
Editor of Messenger



**LAVELLE BERRY YARBROUGH**

A.B.  
Piano, High School Spanish

**D. A. YARBROUGH**

B.S., A.B.  
Head of Music Department  
High School History

**ADA BLACKBURN**

Dietician



**ADRON E. HOLLINS**

Dean of Women

**FERNE DOGGETT SHELTON**

B.S.  
Art, High School English



**MRS. M. R. MERRIMAN**

R.N.  
Nurse



# FACULTY

**KOY W. PHILLIPS**

Th.B., B.S.

High School English

High School Economics



**MARTHA DeWITT GRESHAM**

A.B., M.A.

Biological Science

High School Home Economics

**ALTA LINDSAY REDFORD**

B.S., M.A.

High School Science

Mathematics



**MRS. GRADY SCOTT**

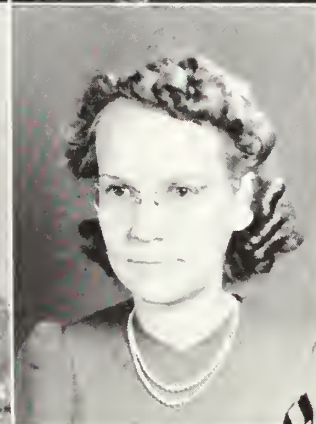
Commercial

**ANNA LLOYD WENDELL**

Assistant Piano

**L. D. SHELTON**

Dean of Men



**MRS. M. A. MACKEY**

Assistant Grade Teacher

**NONA EDWARDS**

Commercial



**MRS. A. K. BRACKEN**

A.B., M.A.

Supervisor of Grade School

Education



## COLLEGE SENIORS

MRS. GLENN CASS

HUBERT MEREDITH

LOTTIE BLACKBURN



## COLLEGE JUNIORS

BERNICE BRADLEY

SHIRLEY LEE

GLADYS OWEN



## COLLEGE SOPHOMORES

LEON CHAMBERS

NONA EDWARDS

ROBERT SUMNER



## COLLEGE FRESHMEN

JACK WALLING

BOB MOORE

LEOTA COOK

PATRICIA CARTE

# THE CLASS



## HIGH SCHOOL SENIORS

DORIS FORBES  
WILLENE AGEE  
HERBERT BROWN



## HIGH SCHOOL JUNIORS

WILLARD BROWN  
SARAH SPRUILL  
BROOKSIE CROCKARELL  
LUCILLE RIGGS



## HIGH SCHOOL SOPHOMORES

JAMES McLELLAND  
LOUISE BRAKEFIELD  
MAE KIMBRO  
NINA SHARPE



## HIGH SCHOOL FRESHMEN

J. H. STEWART  
VERA WHITE  
FAYE IHRIG  
IVA MAE GRANT



# OFFICERS

# SENIORS



LOTTIE BLACKBURN . . . . . Robertsdale, Alabama

A.B., Economics

"She is just the quiet kind whose nature never varies."

Secretary of Senior Class, '42-'43.



MARY FRANCES CASS . . . . . Sanford, Florida

A.B., English

"Exhausting thought,

And having wisdom with each studious year."

Th.B., Trevecca College; President, Senior Class, '43; Honor Society,

'41-'42-'43.



CLAUDE W. GALLOWAY . . . . . Nashville, Tennessee

Th.B., Religion

"He serves God well,

Who serves his creatures."

A.B., Asbury College; Editor-in-Chief, Darda, '43.



W. M. GREATHOUSE . . . . . Franklin, Tennessee

Th.B., Religion

"A soul of power, a well of lofty thought."

A.B., Lambuth College.





# S E N I O R S



EUDON LATHAM . . . . . Columbus, Georgia  
A.B., Economics

"He is complete in feature, and in mind,  
With all grace to grace a gentleman."



ERNEST McDOWELL . . . . . Brooksville, Tennessee  
Th.B., Theology

"Rare compound of quality, noble and true,  
With plenty of sense and good humor, too."  
A.B., God's Bible School.



HUBERT MEREDITH . . . . . Owensboro, Kentucky  
Th.B., Theology

"It is a good thing to be zealously affected, always in a good thing."  
Vice-President, Senior Class, '43.

M. R. MERRIMAN . . . . . Nashville, Tennessee  
Major, Theology

"Whatever makes men good Christians, makes them good citizens."  
A.B., Asbury College.

# JUNIORS



HOMER JAMES ADAMS  
Pensacola, Florida

EVA BLACKBURN  
Robertsdale, Alabama

SHIRLEY LEE  
E. Brewton, Alabama

BOYD W. DAVIS  
Hagerstown, Maryland

FRIEDA NESBITT  
Paris, Tennessee

BERNICE BRADLEY  
Hattiesburg, Mississippi

DELIA SHAW  
Orlando, Florida

LUCY MAE FARIS  
Victoria, Virginia



# JUNIORS



GLADYS OWEN

Mt. Sterling, Kentucky

CONNIE KELLY

Columbia, South Carolina

B. WADE DOWNING

Ovett, Mississippi

VIRGINIA RIGSBEE

W. Chazy, New York

EUEL FOX

Victoria, Virginia

NORMA MUSE

Delmer, Kentucky

IRLENE STOVALL

Highway, Kentucky



# SOPHOMORES



REYNDAL RUSSELL  
Columbus, Mississippi

BEATRICE BRAKEFIELD  
Birmingham, Alabama

LEILA DELL MILLER  
Columbus, Georgia

RUPERT CRAVENS  
Hartville, Missouri

BOB WIGGS  
Benton, Illinois

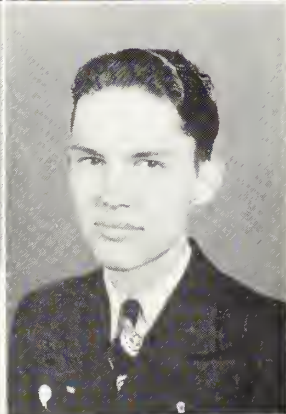
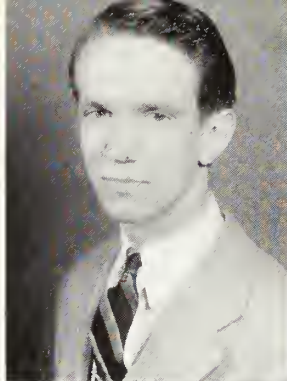
ANNA LLOYD WENDELL  
Springfield, Tennessee

RENA DUNCAN  
Greeneville, Tennessee

BOB SUMNER  
Miami, Florida

REO MILLER  
Marencie, Michigan

ROSA CROSON  
Hurricane, West Virginia





# SOPHOMORES



LEON CHAMBERS  
Fairfax, Alabama

MARY FRANCES BROWN  
Meridian, Mississippi

MILDRED FOREMAN  
Magnolia, Mississippi

WILFORD HAWKINS  
New Albany, Indiana



BOB HEDRICK  
Charleston, West Virginia

LUCILLE GARRELL  
Lake Mary, Florida



NONA EDWARDS  
Miami, Florida

ROBERT BUSH  
Columbus, Georgia



ARNOLD PRICE  
Wrightsville, Georgia

ADA MIDDLETON  
Dayton, Ohio



# SOPHOMORES ★ ★

J. R. BROWNING  
Huntington, West Virginia

LORENA SHARPLING  
McComb, Mississippi

CLARENCE PATTON  
Bloomington, Indiana

HERBERT JARED  
Nashville, Tennessee

RUTH WHALEN HUFF  
Cynthiana, Kentucky

PAUL JORDAN  
Nashville, Tennessee

LOUISE SHOAF  
Winston-Salem, North Carolina

EWIN WHITE  
Nashville, Tennessee

SARA BREEDON  
Greensboro, North Carolina



# FRESHMEN

ALMA MURREE  
Sparr, Florida

ROSS PELTON, JR.  
Waycross, Georgia

MAYME MADEWELL  
Cookeville, Tennessee

NORA FAYE WATSON  
Cullman, Alabama

JACK WALLING  
Charleston, West Virginia

RUBY STOVALL  
Highway, Kentucky

CLARA FARIS  
Victoria, Virginia

CHARLES ELBERT DODD  
Lake Charles, Louisiana

CHRISTINE MILLER  
Bowling Green, Kentucky

MARIE LINDSAY  
Nashville, Tennessee

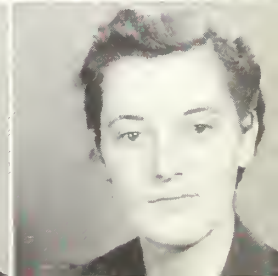
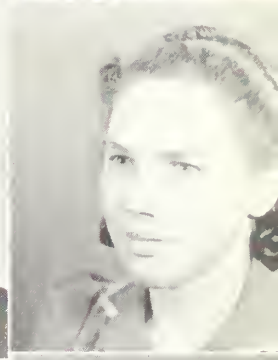
J. C. REEDY  
Rocks, Maryland

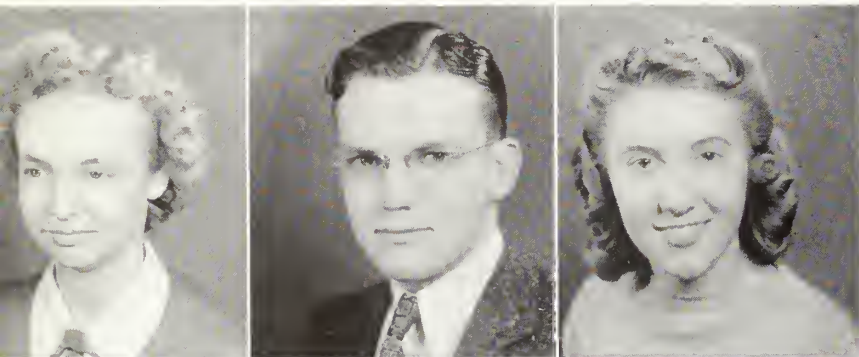
MADLINE MARSHALL  
Lakeland, Florida

IDA ZIMMERMAN  
Yale, Virginia

ARCHIE MADISON  
Nashville, Tennessee

RUTH POND  
Bennettsville, South Carolina





MARY ELIZABETH WATTS  
Frankfort, Kentucky



ROGER ROBINSON  
Loudon, Tennessee



FLORA CANTERBURY  
Holden, West Virginia



EVELYN RAMSEY  
Richmond, Kentucky



VERNON CHANDLER  
Scotsville, Kentucky



RUTH GARVIN  
Kankakee, Illinois



AUBREY BURTON  
Somerset, Kentucky



J. E. FOX  
Victoria, Virginia



MARGARET SIKES  
Lake Wales, Florida



LOUISE MCKAIG  
Nashville, Tennessee



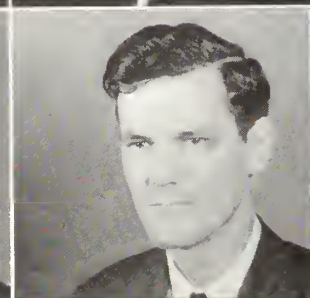
CARL ROSS  
McEwen, Tennessee



AVONELLE BURNETTE  
Frankfort, Kentucky



LILA LEE FISHER  
Paden City, West Virginia



JERRY R. MAY  
Jackson, Mississippi



DOROTHY LING  
Bartow, Florida

# FRESHMEN

EVA MAE RANSOM  
Charleston, West Virginia

GLENN CASS  
Nashville, Tennessee

NAOMI MARTIN  
Johnson City, Tennessee

JESSIE MAE MERCER  
Nashville, Tennessee

PAUL HOCUTT  
Adamsville, Alabama

LOUISE CRAWFORD  
Olive Hill, Kentucky

LEOTA COOK  
Benton, Illinois

BOB MOORE  
McComb, Mississippi

MYRTIE ABSTON  
Albany, Kentucky

ARDELLA SARTIN  
Sylacauga, Alabama

DOYLE SMITH  
Savannah, Georgia

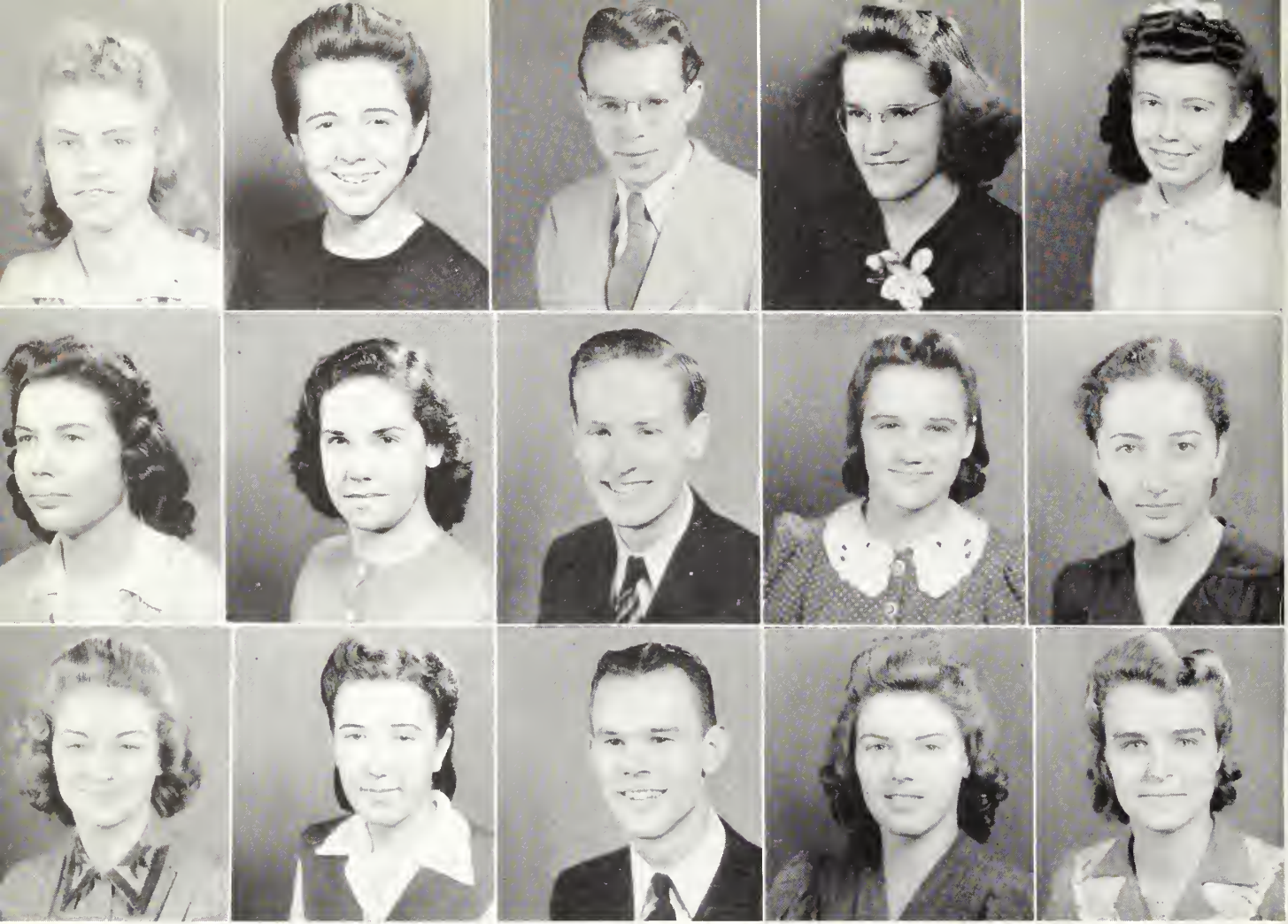
DOROTHY BOWEN  
Haldeman, Kentucky

SARA PEARSON  
Houlka, Mississippi

H. R. WARD  
Nashville, Tennessee

RUTH DERR  
Highland Springs, Virginia





MAVIS MUSE  
Somerset, Kentucky

IRIS HARRIS  
Dickson, Tennessee

MARY TODD  
Benton, Illinois

JEAN RATCLIFFE  
Indianapolis, Indiana

PATRICIA CARTE  
Charleston, West Virginia

ROBERTA SAMPLES  
Beaumont, West Virginia

ROY KRUSE  
St. Louis, Missouri

FRAZIER HANCOCK  
Thomasville, Georgia

JOHN MAURICE  
Nashville, Tennessee

DOROTHY KING  
Monroe, North Carolina

JEAN GOINS  
Cottondale, Alabama

ALEXINE MUSE  
Somerset, Kentucky

HAZEL THROWER  
Nashville, Tennessee

RUTH REID  
Florence, Alabama

OVA LEE JAMISON  
McEwen, Tennessee

# FRESHMEN

# MINISTERIAL

**SYLVAN NUSSBAUM** . . . . . Nashville, Tenn.  
 He is a Christian of sterling qualities, eager to learn, willing to persevere, ready to serve God and his fellowman.

**MAE McLINDON** . . . . . Winnsboro, S. C.  
 With all her heart she serves God; with all her life she serves her fellowman.

**MALCOLM NORTH** . . . . . Nashville, Tenn.  
 His main purpose in life is to be a soul winner. May he accomplish his purpose.

**ERMA TOMS** . . . . . Norwood, Ohio  
 She possesses the qualities of a successful Christian worker and reveals them in her service for the Master.

**ROBERT RUTHERFORD** . . . . . Orlando, Fla.  
 His consistent Christian life is testifying for the Lord in his personal work.

**LUTHER KING** . . . . . Nashville, Tenn.  
 His ideals are high, and he is expecting great things of the Lord.

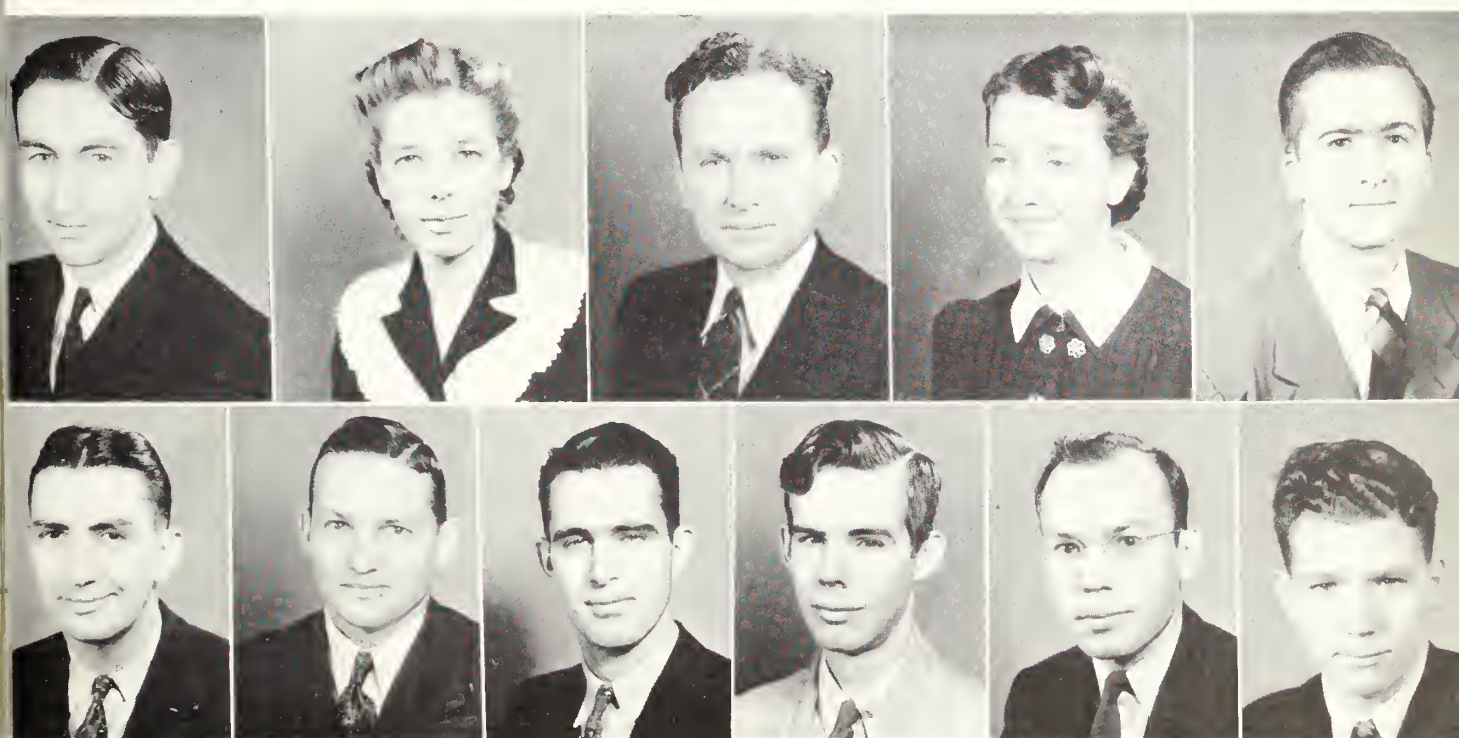
**I. W. JUSTICE** . . . . . Nashville, Tenn.  
 Quietly, patiently, and consistently he performs his duty and does it well.

**LINDON SCALES** . . . . . Nashville, Tenn.  
 It is quite evident that he is deserving of the good reputation that he has.

**ARTHUR PICKETT** . . . . . Miami, Fla.  
 His faithfulness in devotion to God and communion with God are characteristic of his life.

**HENRY HOBBS** . . . . . Savannah, Ga.  
 We have learned that he is industrious, dependable, studious—a man with high ideals.

**PAUL McGRADY** . . . . . Colora, Md.  
 Salvation surely is Paul's, for he lives it every day.





# HIGH

**MARTHA BELL KINGERY**  
Cincinnati, Ohio

Glee Club, '40, '41; Basketball Team, '40, '41, '42; Octavian Literary Society, '40, '41, '42, '43.

**CARL CROSBY**  
Columbia, South Carolina

Senior Class Poet, '43; Secretary, Georgia Club, '43; Student Council, '41.

**ETHEL VENABLE**  
St. Louis, Missouri

Glee Club, '41, '42; Ramblers' Club, '41, '42, '43; Octavian Literary Society, '41, '42, '43.

**EVANGELINE HOFFMAN**  
Birmingham, Alabama

Chorus Pianist, '43; Octavian Literary Society, '43.

**LOUISE CRAFT**  
Russell, Kentucky

Senior Class Reporter, '43; Glee Club, '42, '43; Octavian Literary Society, '42, '43; Girls' Trio, '42.

**JOHN D. BENSON**  
Princeton, Florida

Octavian Literary Society, '43.

**WILLENE AGEE**

Old Hickory, Tennessee

Secretary, Tennessee Club, '43; Vice-President, Octavian Literary Society, '43; Secretary, Senior Class, '43.

**BEAUTONNE BURRIS**

St. Louis, Missouri

Octavian Literary Society, '43.

**HERBERT L. BROWN**

Nashville, Tennessee

Football Team, '40, '41, '42, '43; President, Senior Class, '43; Ramblers' Club, '40, '41, '42, '43.

**DeRHETA YOUNG**

New Smyrna Beach, Florida

Octavian Literary Society, '43.

**NOVICE HARRISON**

Ft. Lauderdale, Florida

Secretary and Treasurer, Hobby Club, '40; Co-op Training Club, '42; Octavian Literary Society, '43.

**DORIS FORBES**

Roanoke, Virginia

President, Octavian Literary Society, '43; Virginia Club, '40, '41, '42, '43.



# SCHOOL SENIORS

**JOHN O'BANNON**

St. Louis, Missouri

Chorus, '43; Octavian Literary Society, '43; Band President, '41, '42; Track, '40, '41, '42; Football Team, '42.

**EULA MAE LINDSEY**

Waycross, Georgia

Glee Club, '40, '41, '42; Kiwanis Spelling Award, '41; Sophomore Class Treasurer, '41; Basketball, '41.

**CLAUDE E. STEWART, JR.**

Big Springs, Texas

Football, '40, '41; Treasurer, Ramblers' Club, '43; Treasurer, Christian Workers' Association, '43; Treasurer, Senior Class, '43; Vice-President, Missionary Society, '43.

**MARJORIE SNODGRASS**

Charlotte, North Carolina

Octavian Literary Society, '43; Ramblers' Club, '43.

**J. C. MARKHAM**

Greenwood, South Carolina

Pi Gamma Delta Literary Society; Sophomore Class President, '41.

**MERLE CHAPEK**

Meridian, Mississippi

Glee Club, '42, '43; Girls' Trio, '42; Octavian Literary Society, '42, '43.

**ADRIAN ROSA**

St. Louis, Missouri

Captain, Christian Workers, '43; Octavian Literary Society, '42, '43.

**GLORIA McDOWELL**

Newport, Kentucky

Basketball, '40, '41, '42, '43; Latin Club, '40; Treasurer, Kentucky Club, '43; Pen Pal Club, '41, '42.

**EMMA FRANCES WIGGS**

Gainesville, Florida

Chorus, '40, '41, '42, '43; Kiwanis Award, '41; Basketball, '40.

**ANNE TROUT**

Camden, Tennessee

Chorus, '40, '41, '42; Secretary, Missionary Society, '40, '41; President, Missionary Society, '42, '43; Captain, County Workhouse, '41, '42, '43.

**JIMMIE RUTH YOUNGBLOOD**

French Camp, Mississippi

Octavian Literary Society, '42.

**ERMA BURTON**

Olive Hill, Kentucky

Chorus, '43; Octavian Literary Society, '43; Vice-President, Kentucky Club, '43.



# H I G H S C H O O L J U N I O R S

SARAH SPRUILL . . . . . Nashville, Tenn.  
 MARY CANNON . . . . . Columbia, S. C.  
 C. B. SMITH . . . . . Claxton, Ga.  
 BROOKSIE CROCKARELL . . . . . Clarksville, Tenn.  
 MARTHA ERRICKSON . . . . . Clearwater, Fla.  
 SHIRLEY JUNE COOK . . . . . Gillett, Ark.  
 LOUISE THOMPSON . . . . . Ft. Myers, Fla.  
 WILLARD BROWN . . . . . Roanoke, Va.  
 EDITH MAURICE . . . . . Nashville, Tenn.  
 AUDREY THOMPSON . . . . . Hattiesburg, Miss.  
 FRAN MILLER . . . . . Vicksburg, Miss.  
 A. D. BOONE . . . . . Jayess, Miss.

RUTH PICKLER . . . . . Paris, Tenn.  
 ANNE BALL . . . . . Birmingham, Ala.  
 CURTIS ALBRO . . . . . Louisville, Ky.  
 JEWELLINE COOK . . . . . Sulligent, Ala.  
 BOB BLANCHARD . . . . . Jonesboro, Ark.  
 PEGGY FOUNTAIN . . . . . Lakeland, Fla.  
 HOMER BENSON . . . . . Aliceville, Ala.  
 VERNA SMITH . . . . . Chattanooga, Tenn.  
 LUCILLE RIGGS . . . . . Anniston, Mo.  
 DOROTHY BRUCE . . . . . Nashville, Tenn.  
 NORMA LEE SHARPLING . . . . . McComb, Miss.  
 MARY CATHERINE THORNLEY . . . . . Charleston, S. C.  
 EVA JEAN FARMER . . . . . Nashville, Tenn.  
 LOUISE BOTTENS . . . . . Nashville, Tenn.  
 ALICE RUTH GRESHAM . . . . . Dalton, Ga.  
 LOIS WIGGINTON . . . . . Frankfort, Ky.  
 JUANITA DAVIS . . . . . Bristol, Va.





ADELEEN WEST ..... Richmond, Va.  
 JOHN HAMBY ..... Tuscumbia, Ala.  
 DOROTHEA STEPHENSON ..... Covington, Ky.  
 LOUISE BRAKEFIELD ..... Birmingham, Ala.  
 WILLETA CASH ..... Birmingham, Ala.  
 LULU SAMPLES ..... Beaumont, W. Va.  
 JACK MOORE HARRISON ..... Mabelvale, Ark.  
 JULIA HOWARD ..... Ravenna, Ky.  
 KATREEN ELLIOTT ..... Flovilla, Ga.  
 ADELINE SANDERS ..... Indianapolis, Ind.  
 MARIE MASTERS ..... Richmond, Ky.  
 ROSCOE HENDERSON ..... Winchester, Tenn.

## H I G H S C H O O L S O P H O M O R E S

MAE KIMBRO ..... Dickson, Tenn.  
 HAZEL BOX ..... French Camp, Miss.  
 BETTY JEAN COX ..... Nashville, Tenn.  
 RUTH MOORE ..... Dickson, Tenn.  
 JAMES MacLELLAN ..... Nashville, Tenn.  
 MILDRED BROCKMAN ..... Lexington, Ky.  
 BILL THOMAS ..... Miami, Fla.  
 RALPH YOUNG ..... Winchester, Tenn.



# H I G H S C H O O L F R E S H M E N

JEAN SPRUILL . . . . . Nashville, Tenn.  
 MILDRED CAMPBELL . . . . . Russellville, Ala.  
 DOUGLAS WALKER . . . . . Nashville, Tenn.  
 NEVA GAYE MACKAY . . . . . Nashville, Tenn.  
 EVA FAYE MACKAY . . . . . Nashville, Tenn.  
 MARJORIE HOFFMAN . . . . . Birmingham, Ala.  
 MARGARET CUTTRELL . . . . . Nashville, Tenn.  
 BETTY TOMLINSON . . . . . Nashville, Tenn.  
 TOMMY HORN . . . . . Nashville, Tenn.  
 POLLY LOVORN . . . . . Louisville, Miss.

AGNES ALLCORN . . . . . Donelson, Tenn.  
 BETTY RUTH HOLLAND . . . . . New Smyrna Beach, Fla.  
 FAYE IHRIG . . . . . Ft. Thomas, Ky.  
 VERA WHITE . . . . . Frankfort, Ky.  
 MEREDITH GORE . . . . . Batesville, Miss.  
 JIMMY STEWART . . . . . Gallatin, Tenn.  
 JIMMY SUE SUDDIETH . . . . . Russellville, Ala.  
 DALE HALLMARK . . . . . Birmingham, Ala.  
 MARTHA EVA BOBBITT . . . . . Nashville, Tenn.  
 JOHN WILLIAM HOWARD . . . . . Ravenna, Ky.  
 FREDA SCOTT . . . . . Miami, Fla.  
 JOE SONGER . . . . . Charleston, W. Va.  
 BETTY STEWART . . . . . Roanoke, Va.  
 JOSEPHINE WUNDERLICK . . . . . Cullman, Ala.  
 IVA MAE GRANT . . . . . Gallatin, Tenn.

VIRGINIA PATTON  
HARRY HUFF  
NAOMI NABORS MORGAN



# SPECIAL STUDENTS

## GRAMMAR GRADES

VERA ADAMS  
JAMES ANDERSON  
EMMA BLAND  
PHILLIP CALLIS  
ELIZABETH ANN FRENSELY  
GLENN GARNER  
VIRGIL FRANKLIN GRANT  
JAMES HARRISON

OWEN WITT HOWARD  
CAROLINE KING  
CLOTINE KING  
MARY FRANCES McDANIEL  
OTIS EDWARD McELREATH  
EUNICE MacLELLAN  
ARLENE MERRYMAN

LELA JANETTE PATTON  
ESTHER RAY RODGERS  
JOHN PHILIP RODGERS  
HOWARD SPRUILL  
JAMES SPRUILL  
GERALDINE VITATOE  
ALLEN WEAVER



A N D N O W W E P A U S E . . .  
 T O R E M E M B E R

Those who have gone from our halls into every branch of the armed forces of our nation and are now in camps and on major battle fronts engaged in the struggle for life, liberty, and freedom of worship. Our prayers follow them daily.

Curtis Albro	Chester Davis	Hollis Joines	Lorena Ross
Elmer Alford	Curtis Davis	Horace Jocelyn	(Signal Corps)
John Apple	Charles Dodd	Thomas King	Dee Rushing
Bill Ayers	Glenn Eby	Curtis Kirkland	Floyd Shafer
Hubert Bankston	Carl Fannin	Shural Knippers	C. B. Smith
Martin Bass	Joe Foreman	Roy Kruse	Jimmie Smithson
Joe Bates	J. E. Fox	Clayton Langford	(WAVES)
Arthur Batson	Earle Friend	J. B. Linsley	Josh Spooner
John Benson	Melvin Gill	Campbell Mackey	Glenn Stovall
Charles Blackburn	Henry Gregory	Everett Mackey	James Stovall
Frank Blackburn	Wallace Grice	Charles May	Wilson Strasbaugh
Bob Blanchard	Marvin Halliburton	J. R. May	S. W. Strickland, Jr.
A. D. Boone	John Hamby	Jack Miller	James Sullivan
Clyde Boone	Paul Harris	Bug Mims	R. J. Sullivan
Albert Bostic	Wilford Hawkins	Andrew Minton	John Summerlin
Floyd Bowman	Frank Helm	Fred Moore	Kenneth Taylor
Carroll Bradley	Hayden Hicks	LaDell Morgan	Jack Thomas
John M. Brown	Alton Hodge	Max Morgan	Jimmie Thomas
Weston Brown	C. D. Holly	Sherman Nash	George Thomason
Preston Burnett	Edward Howard	Maurice O'Bannon	Jimmie Thrasher
Dudley Burrow	Ralph Howe	Floyd Peele	Samuel Vann
Hobson Byars	Ralph Hudson	Charles Pegram	Ewell Watson
Willie Clem	Walton Hurt	Orion Ramsey	Bob Wendell
Troy Cook	Claude Jamison	Adrian Rosa	Ralph White
Don Croft	Ronald Johnson		Willard Wilsey

(This list is as complete as possible. Any omissions are entirely unintentional.)



# ACTIVITIES



#### OFFICERS

MARY FRANCES BROWN . . . . . President      EVELYN RAMSEY . . . . . Secretary-Treasurer  
 LORENA SHARPLING . . . . . Vice-President      CARL ROSS . . . . . Chaplain  
 MRS. A. B. MACKEY . . . . . Sponsor

#### MEMBERS

Myrtie Abston	Ruth Derr	Roy Kruse	Ruth Reid
Homer Adams	Charles Elbert Dodd, Jr.	Marie Lindsley	Virginia Riggsbee
Eva Blackburn	B. Wade Downing	Dorothy Ling	Estelle Robinson
Lottie Blackburn	Rena Duncan	Mayme Madewell	Roger Robinson
Dorothy Louise Bowen	Nona Edwards	Madeline Marshall	Carl Ross
Bernice Bradley	Clara Faris	Naomi Martin	Reyndal Russell
Beatrice Brakefield	Lucy Mae Faris	Jerry R. May	Roberta Samples
Sarah Breedon	Lila Lee Fisher	Hubert Meredith	Ardella Sartin
Mary Frances Brown	Mildred Foreman	Ada Middleton	Lorena Sharpling
Avonelle Burnette	Euel M. Fox	Christeen Miller	Delia Shaw
Aubrey Burton	J. E. Fox, Jr.	Leila Dell Miller	Louise Shoaf
Robert Bush	Lucille Garrell	Reo D. Miller	Margaret Sikes
Flora Canterbury	Wilma Ruth Garvin	Robert Moore	Doyle Smith
Johnnie Carroll	Jean Goins	Alma Murrhee	Irlene Stovall
Patricia Carte	Frazier M. Hancock	Alexine Muse	Ruby Stovall
Glenn Cass	Iris Harris	Mavis Muse	Robert Sumner
Mary Frances Cass	Wilford Hawkins	Norma Muse	Lena Mae Cook Swope
Leon Chambers	Bob Hedrick	Frieda Nesbitt	Mary Todd
Vernon Chandler	Paul Hocutt	Sarah Pearson	Jack Walling
Leota Cook	Harry Huff	Ross Pelton	Nora Faye Watson
Rupert Cravens	Ruth Whalen Huff	Ruth Pond	Mary Elizabeth Watts
Louise Crawford	Ova Lee Jamison	Arnold Price	Anna Lloyd Saxon Wendell
Mary Creig	Herbert Jared	Evelyn Ramsey	Ewin White
Rosa Crosan	Connie Kelly	Eva Mae Ransom	Robert Wiggs
Boyd W. Davis	Dorothy King	Jean Ratcliffe	Ida Zimmerman

PARTHENIAN  
 LITERARY SOCIETY





#### OFFICERS

DORIS FORBES  
WILLENE AGEE

President  
Vice-President

BROOKSIE COCKARELL Secretary-Treasurer  
ADELINE SANDERS Chairman, Program Committee

#### MEMBERS

Willene Agee  
Curtis Albro  
Agnes Allcorn  
Anne Ball  
Homer Benson  
John D. Benson  
Robert Blanchard  
James O. Bland, Jr.  
Martha Eva Bobbitt  
Louise Bottens  
Hazel Box  
Louise Brakefield  
Mildred Brockman  
Herbert Brown  
Willard Brown  
Dorothy Bruce  
Calvin Burns  
Beautonne Burris  
Erma Burton  
Mildred Campbell  
Mary Cannon  
Willetta Cash  
Merle Chapek

Jewelline Cook  
Shirley June Cook  
Geraldine Courtney  
Betty Jean Cox  
Louise Craft  
Brooksie Cockarell  
Carl Crosby  
Juanita Davis  
Katreen Elliott  
Chauncey Ellis  
Martha Erickson  
Eva Jean Farmer  
Doris Forbes  
Peggy Fountain  
Max Gore  
Iva May Grant  
Alice Ruth Grasham  
John Hamby  
Jack Moore Harrison  
Novice Harrison  
Roscoe Henderson  
Evangeline Hoffman  
Marjorie Hoffman

Betty Ruth Holland  
Thomas Horn  
Bill Howard  
Julia Howard  
Faye Ihrig  
Mae Kimbro  
Martha Belle Kingery  
Eula Mae Lindsey  
Gloria McDowell  
Eva Fay Mackey  
Neva Gay Mackey  
J. C. Markham  
Marie Masters  
Fran Miller  
Ruth Moore  
Ruth Pickler  
Lucille Riggs  
Adrian Rosa  
Lulu Samples  
Adeline Sanders  
Freda Scott  
Nina Sharpe  
Norma Lee Sharpling

C. B. Smith  
Verna Smith  
Margie Snodgrass  
Joe Songer  
Jean Spruill  
Sarah Spruill  
Dorothea Stephenson  
Claude Stewart, Jr.  
Jimmie Sue Suddieth  
William K. Thomas  
Audrey Thompson  
Louise Thompson  
Mary Catherine Thornley  
Betty Tomlinson  
Anne Troutt  
Ethel Venable  
Adeline West  
Martha White  
Lois Wigginton  
Emma Frances Wiggs  
DeRheta Young  
Ralph Young  
Jimmie Ruth Youngblood



OCTAVIAN  
LITERARY SOCIETY

# MUSIC GROUPS



## COLLEGE QUARTET

REYNDAL RUSSELL  
HOMER ADAMS

JACK WALLING  
RUPERT CRAVENS

## HIGH SCHOOL QUARTET

C. B. SMITH  
HENRY HOBBS

J. H. STEWART, JR.  
JACK HARRISON



It would be strange to walk onto Trevecca's campus without hearing the strains of music. There is no better medium of expression for spiritual joy and fervor than the songs of Zion, old and new, and the zeal of our Christian youth is continually thus manifested by various vocal and instrumental groupings, not to mention the beautiful extemporaneous harmony and whole-hearted volume of the student body's singing en masse at prayermeeting and chapel. In a word music is the very heartbeat of Trevecca.





## CHRISTIAN WORKERS AND MISSIONARIES

If you could see the happy faces as the students leave for Christian work you would understand why they look forward to the week-ends so eagerly. Off to the jails, workhouses, hospitals, and even the streets they carry the glorious and inspiring message of Jesus Christ. Their enthusiasm and initiative to do something for their Savior and lost souls is blessed by fruitful services with sinners repenting for their wayward lives.

"Go out into the highways and hedges and compel them to come in," teaching them that "whosoever believeth in Him should not perish but have eternal life" has been our task, but a blessed one. To see the hardened faces light

up as the love of God comes into the hearts makes the service wonderfully worthwhile. No wonder we enjoy testifying and working for such a wonderful Savior.

---

The purpose of Trevecca College Missionary Society is to promote interest in missions. Both young men and women are privileged to attend our weekly services. If you think that a missionary service is dry just drop into one of our services and see if you do not change your mind. We have eight life members, and our aim is to do a little bit more for missions than we have ever done before.



## HONOR SOCIETY

"There is the love of knowing without the love of learning." (Confucius.) But,

"Learning by study must be won;

'Twas ne'er entail'd from son to son."

(Gay.)

"Experience is the best of schoolmasters, only the school-fees are heavy." (Confucius.)

"And seeing ignorance is the curse of God,  
Knowledge the wing wherewith we fly to Heaven."

(Shakespeare.)

We would both live to study and study to live.

## GREEK CLASS

The learning of Greek enabled the reformers to lead the great spiritual movement of Protestantism back to the true meaning of the Word of God.

Our study of the Greek New Testament opens up new treasures of spiritual truth that can be a great blessing to God's cause. We, as students of Greek classes, appreciate Professor Redford's many efforts to help us find these treasures.



# STATE



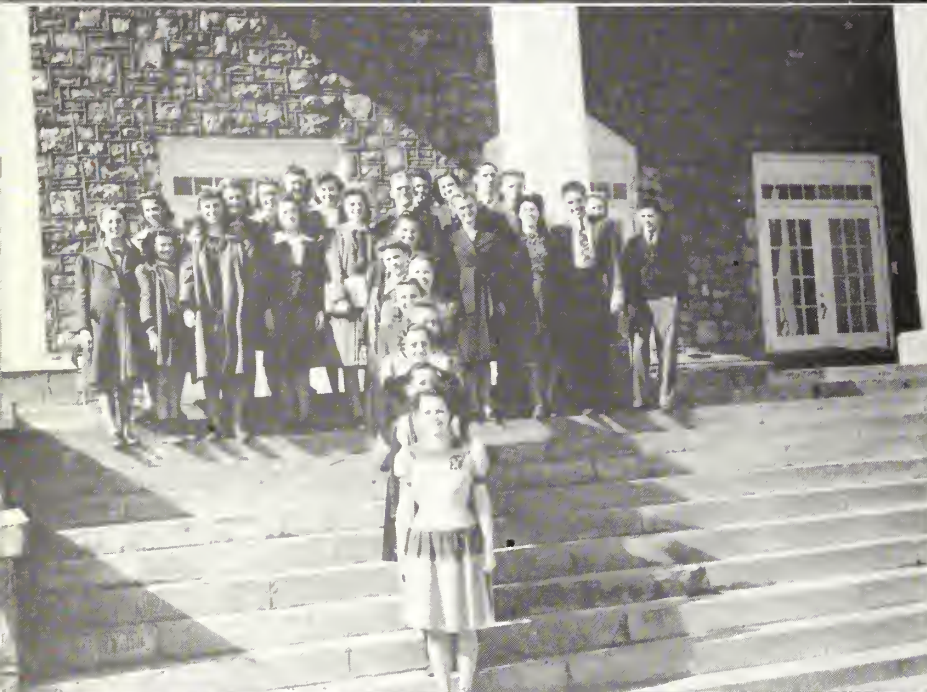
## WEST VIRGINIA CLUB

- ROBERTA SAMPLES . . . . . President
- JACK WALLING . . . . . Vice-President
- ROSA CROSON . . . . . Secretary
- PATRICIA CARTE . . . . . Treasurer
- MRS. L. D. SHELTON . . . . . Sponsor



## TENNESSEE CLUB

- ANNA LLOYD WENDELL . . . . . President
- CARL ROSS . . . . . Vice-President
- WILLENA AGEE . . . . . Secretary
- ANNE TROUTT . . . . . Treasurer
- BROOKSIE CROCKARELL . . . . . Reporter
- PROF. K. W. PHILLIPS . . . . . Sponsor



## MISSISSIPPI CLUB

- B. WADE DOWNING . . . . . President
- JOHN BROWN . . . . . Vice-President
- SARA PEARSON . . . . . Secretary
- MARY FRANCES BROWN . . . . . Treasurer
- PROF. L. P. GRESHAM . . . . . Sponsor



# CLUBS



## ALABAMA CLUB

HOMER ADAMS . . . . . President  
BEATRICE BRAKEFIELD . . . . . Vice-President  
LEON CHAMBERS . . . . . Secretary  
NAOMI NABORS MORGAN . . . . . Treasurer  
LOTTIE BLACKBURN . . . . . Reporter  
DR. AND MRS. A. K. BRACKEN . . . . . Sponsors



## FLORIDA CLUB

ROBERT L. SUMNER . . . . . President  
ALMA MURREHEE . . . . . Vice-President  
DOROTHY LING . . . . . Secretary  
LUCILLE GARRELL . . . . . Treasurer  
PROF. D. A. YARBROUGH . . . . . Sponsor



## RAMBLERS CLUB

REO D. MILLER . . . . . President  
LUCILLE RIGGS . . . . . Vice-President  
BEAUTONNE BURRIS . . . . . Secretary  
CLAUDE STEWART . . . . . Treasurer  
MRS. L. P. GRESHAM . . . . . Sponsor





# STATE CLUBS



## VIRGINIA CLUB

EUEL FOX ..... President  
 HUBERT MEREDITH ..... Vice-President  
 CLARA FARIS ..... Secretary  
 DORIS FORBES ..... Treasurer  
 LUCY MAE FARIS ..... Reporter  
 MISS ADRON HOLLINS ..... Sponsor



## KENTUCKY CLUB

LOUISE CRAWFORD ..... President  
 ERMA BURTON ..... Vice-President  
 EVELYN RAMSEY ..... Secretary  
 GLORIA McDOWELL ..... Treasurer  
 MRS. A. B. MACKAY ..... Sponsor



## GEORGIA CLUB

FRAZIER M. HANCOCK ..... President  
 CONNIE KELLY ..... Vice-President  
 CARL CROSBY ..... Secretary  
 ARNOLD PRICE ..... Treasurer  
 PROF. M. E. REDFORD ..... Sponsor





## TYPING CLASS



Trevecca High School is keeping step with the program of modern education in offering courses that will prove useful to the young people. The classes in typewriting and shorthand give training that will be invaluable to the students in the years to come.

## PREACHERS' KIDS

HOMER ADAMS, President  
BOB MOORE, Viceroys  
REYNDAL RUSSELL, Chancellor of the Exchequer

From all parts of the Southeastern Educational Zone come the sons and daughters of the Nazarene ministers. Just as their parents are leaders of the church today so are these "preachers' kids" expected to be the leaders of the Nazarene Church of tomorrow.





# The New McClurkan





The J. O. McClurkan Memorial Building is of wood, steel, concrete, brick, and stone construction. We are all happy to name this lovely, substantial, sturdy, and beautiful new building in honor of Brother J. O. McClurkan, the founder of Trevecca Nazarene College, for we feel that in a small way it represents the fine, noble, and inspiring spirit and personality of this Christian scholarly gentleman.

This building, begun during the school year of 1940-1941, is now virtually completed and equipped. The cost of building and equipment, according to President A. B. Mackey, is approximately \$45,000, with only about \$1,500 still unpaid.

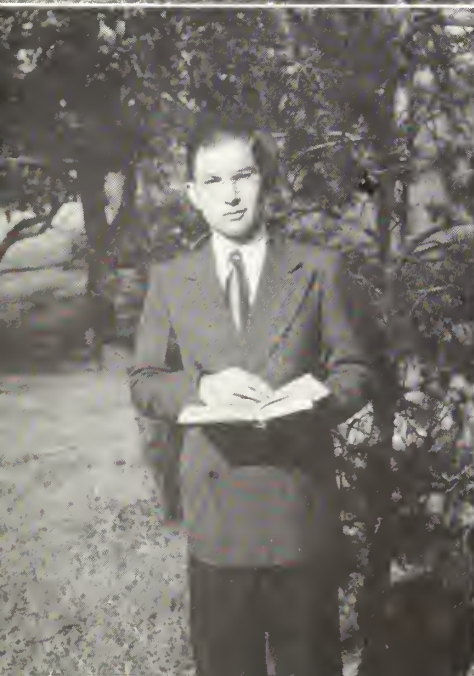
can be built fire-proof vaults for the keeping of important records. The building is modern in design, imposing in appearance, efficient in effect, and arranged according to the standards of present-day educational requirements. The grounds are being landscaped and planted in appropriate trees, shrubbery, and flowers.

God was surely in this building program, for we can see now that since we recently lost the John T. Benson Administration Building by fire we would have been forced to close operations from lack of building facilities. But, thank God, the new building is ample for carrying on for the duration. "The Lord has done great things for us, whereof we are glad."

# Memorial Building

The building is sixty-four feet by one hundred and twenty-four feet, and contains the beautiful college chapel with a platform twenty by forty feet, the main auditorium forty by eighty feet, an open balcony twenty by forty feet, a back balcony twenty by forty feet, a room back of the main auditorium twenty by forty feet, and a side balcony twenty by thirty-six feet. The last three rooms are used for class work, and can be used for the purpose of seating overflow crowds. There are eight classrooms, twenty by thirty feet each and a library reading room thirty by eighty feet which has been divided equally into administration office and a library reading room. There is a library stack room twenty by thirty-six feet and ample stairways and halls are provided. The porch is colonial in design, of concrete structure, fifteen by forty-eight feet, with four massive white square columns, and under the porch is a room of this size in which







# WHO'S WHO

## A T T R E V E C C A



### MOST ATTRACTIVE

CHAUNCEY ELLIS

FRAN MILLER

### MOST FRIENDLY

ARNOLD PRICE

ETHEL VENABLE

### MOST VERSATILE

ANNA LLOYD WENDELL

JACK WALLING

### MOST ATHLETIC

GLORIA McDOWELL

HERBERT BROWN

### MOST INTELLIGENT

B. WADE DOWNING

DOROTHY KING

### MOST EXECUTIVE

CLAUDE GALLOWAY

LORENA SHARPLING





# SNAPSHOTS

1. Taking advantage of the library we did have. 2. Cleaning Down in(g) the dating hall. 3. Going up. 4. A bull-ette session. 5. Another new desk! 6. All set to go.



1



2



3



4



5



6



7

1. Who are you spying on, Roy? 2. The apron, the smiles—they speak for themselves. 3. Master of ceremonies. 4. Our campus. 5. If it's not down the hill, it's up. 6. Thorn Hill—oh, the memories! 7. Looks like a good game.

# SNAPSHOTS



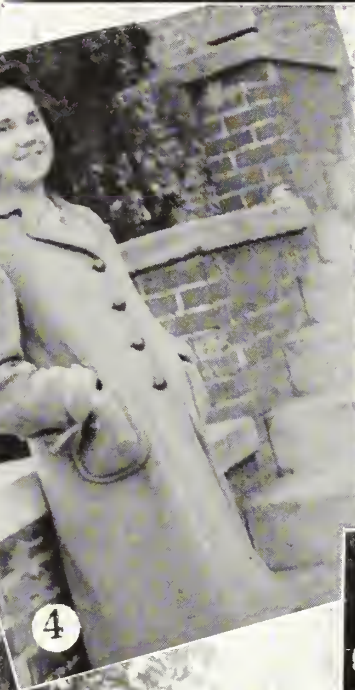
# SNAPSHOTS

1. Something interesting on the other end of the line.
2. No mother to depend on now.
3. The noon business.
4. The most popular girl in the boy's dorm.
5. Our favorite taxi.
6. The setting for happy times.



1. Watch out, Faye, he tells that to all the girls. 2. The "Dead End Kids" look down. 3. Speaking of pictures. 4. A good way to keep fit. 5. Reminiscent of that "Freshman Day." 6. Yes, they're real, honest-to-goodness men. 7. She must have an interest on the line, too.

# SNAPSHOTS



# SNAPSHOTS

1. Hear Ross's eulogy to his Georgia peach! 2. Going to the grind of classes. 3. You'd think they were studious. 4. Bob likes his pictures "a la Carte." 5. Did we surprise you, Tommy? 6. "Don't he look natural?" 7. Pause for identification. 8. Why make such a face; isn't one bad enough?





1. A congenial group. 2. The Romeo of the campus. 3. What! Jack with a book! 4. The controlling forces of our social privileges. 5. Our milking-man. 6. Thanks for the picture, girls. 7. Music with our dinner. 8. Say, fellows, that food really looks good.

## SNAPSHOTS



1



2



3



4



5



6



7

# SNAPSHOTS

1. Does Peggy live up there, Arnold? 2. Somebody ask the freshmen how they liked the "wieners." 3. Such affection! 4. One of our best preachers. 5. Your guess is as good as mine. 6. Stop bickering over the prices, you two. 7. Good-looking, these literary society officers.



1



2



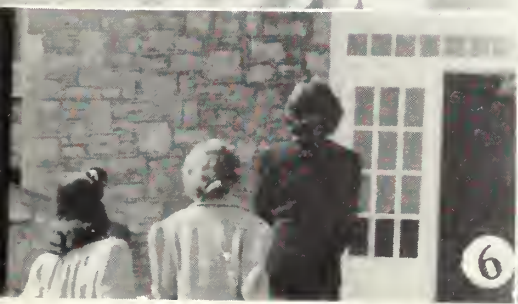
3



4



5



6



7



8

1. The "children" at play. 2. Don't let the girls kid the "old married man," John. 3. Recognize the distinguished-looking couple? 4. Just another W.P.A. gang on Clean-Up Day. 5. Did she "chaperuin" the party? 6. Catching a back view of things. 7. No need to hurry. 8. The sign is a dead give-away.

# SNAPSHOTS



# SNAPSHOTS

1. Eva Mae—how we love her! 2. "Three 'little fishes by the 'little bittie pool.'" 3. Point of interest approximately 100 yards east. 4. Come on, Roger, and give some girl a break. 5. Our pretty little Fran. 6. Are they eyeing the camera, or the camera man? 7. Fun in the snow. 8. Who are the handsome fellows? 9. Girls, look pretty. 10. Taking life easy. 11. Looks wonderful.



1. Angle of Ad Building seen from Girls' Dorm. 2. Firemen fighting fire. 3. Home of our president. 4. Peaceful view of back of Ad Building. 5. Working to save equipment from burning building. 6. Watching the destruction of the fire.

## SNAPSHOTS



# SNAPSHOTS

1. Put on your best smile, children. 2. Fast friends. 3. Is anybody looking? 4. Bob and Carmelita, a familiar sight. 5. Leave it to Curtis to think of something different. 6. "Two little sisters" this time. 7. Boo, yourself! 8. John Hamby—well-liked by everyone. 9. Must have been a wedding. 10. Have fun, girls? 11. Five fine folks facing photographer.

Mr. Redford (Talking seriously in Greek class):  
I want to go to heaven.

Lila Lee Fisher: Well I want to go to Greece.

Mr. Redford: Well, lady, you surely would  
make a lot of it!

✓ ✓ ✓

Hubert Meredith: (Down on the ground under  
the light looking for something).

Evelyn Ramsey: What's the matter? Have you  
lost something?

Meredith: Yes, I lost a half dollar up on the  
hill.

Evelyn: Well, why are you looking for it down  
here?

Meredith: Because the light's better down here.

✓ ✓ ✓

Delia Shaw: Did you know that I only weighed  
 $3\frac{3}{4}$  pounds at birth?

Dorothy Ling: Did you live?

Delia: Did I? You just ought to see me now!

✓ ✓ ✓

Bro. Saxon: Dr. Chapman, I challenge you to  
find any finer looking group of people than these  
Tennesseans.

Dr. Chapman: Well, I'll have my wife send  
you a photograph from Swaziland.

✓ ✓ ✓

Pilot, just after tailspin: I'll bet 50 per cent  
of the people down there thought we were going  
to be killed that time.

Student Pilot: Yes sir! And 50 per cent of  
the people up here thought so, too.

✓ ✓ ✓

Jack Walling: I'll take a porterhouse steak,  
drowned in mushrooms, with some delicately  
browned toast and plenty of butter.

Norma Lee Sharpling: Are you trying to order  
or just reminiscing?

Did anyone ever retrieve Miss Person's hat  
pin from the Ad Building fire?

✓ ✓ ✓

Definition of a bachelor: One who sees no  
advantage of leaving good quarters to get a  
better half.

✓ ✓ ✓

**News Flash!** Fast action opening up on home  
front. West Virginia girl's father wakes flank  
attack in new sector. Shoots at prospective son-  
in-law. Said son-in-law retreats precipitously.  
(If you're a pretty goot guesser you'll know who  
this means.)

✓ ✓ ✓

Bob Sumner wrote home: "Dear Dad—gue\$\$  
what I need mo\$t of all? That'\$ right. \$end it  
along. Be\$t wi\$he\$. Your \$on, Bob."

His father replied: "Dear Bob: NOthing ever  
happens here. Write us aNOther letter at  
aNOw. NOW we have to say goodbye."

✓ ✓ ✓

Why is the worm in the cornfield like Bob  
Wiggs? Because everything goes in one ear  
and out the other.

✓ ✓ ✓

Ruth Whalen (In meat shop): I'd like to get a  
young chicken.

Butcher: Do you want a pullet?

Ruth: No, I'll carry it.

✓ ✓ ✓

(Ewin White and Delia Shaw on bus going to  
town):

He arose with great alacrity

To give her his seat.

It was a question of whether he or she

Should stand upon his feet.

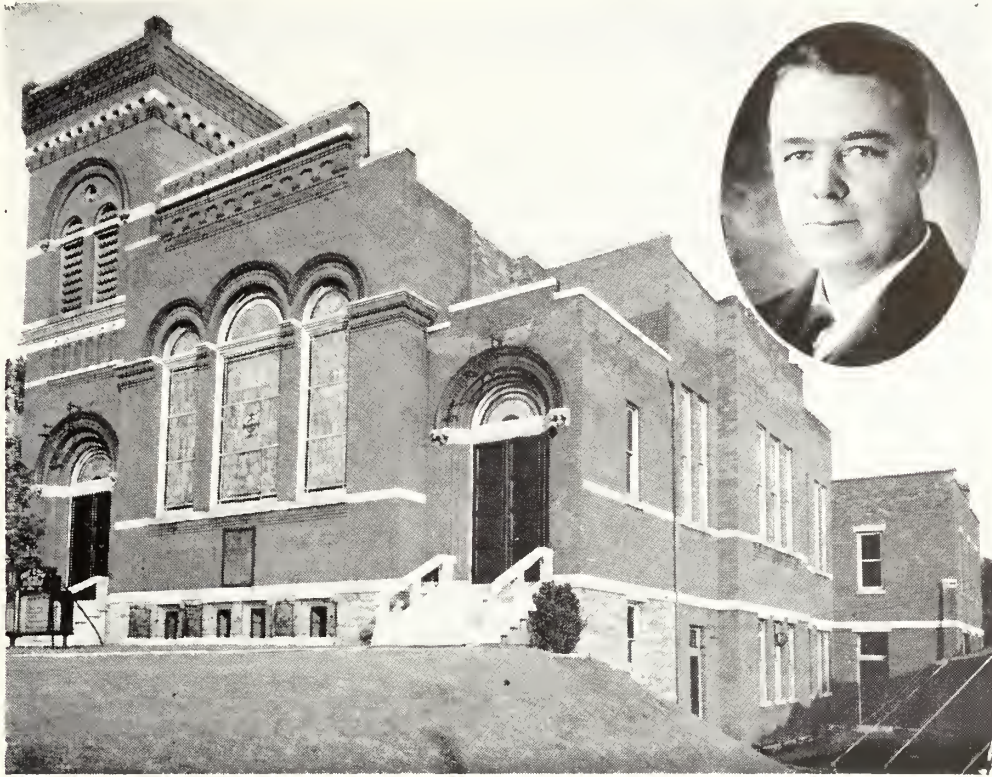


CLAUDE GALLOWAY	Editor-in-Chief
GLADYS OWEN	Assistant Editor
HOMER ADAMS	Business Manager
REYNDAL RUSSELL	Assistant Business Manager
JACK WALLING	Sales Manager
WILFORD HAWKINS	Assistant Sales Manager
ROY KRUSE	Art Representative
RUTH WHALEN HUFF	Music Representative
BEATRICE BRAKEFIELD	Stenographer
NONA EDWARDS	Stenographer
BOB BUSH	Theological Representative
EULA MAE LINDSEY	High School Representative
MRS. A. B. MACKEY	Faculty Advisor

Mrs. Mackey's advice to the 1943 Darda staff has been characterized by foresight and sound judgment. We highly appreciate her as a teacher, a Christian, and a friend.

# D A R D A S T A F F





# THE FIRST CHURCH OF THE NAZARENE

510 Woodland Street

H. H. WISE, Pastor

SUNDAY SCHOOL ..... 9:30 Each Sunday

A Department and Class for All. The Students are Welcome Here

W. E. O'FERRELL, Superintendent

N. Y. P. S. .... 6:30 Each Sunday

"Where the Students are Always Welcome"

JAMES A. PATE, President

Hi-N. Y. .... 6:30 P.M.

Jr. Hi-N. Y. .... 6:30 P.M.

COMPLIMENTS  
OF  
**NETTIE A. MILLER**  
EVANGELIST



WHERE GOD AND MAN  
MEET

REGULAR SERVICES

When in Nashville Worship  
With Us

A Cordial Welcome Awaits You

REV. M. E. REDFORD, Pastor

**SOUTHSIDE  
CHURCH OF THE NAZARENE**

Third Avenue, South, and Ash Street

Nashville

# LOUISVILLE FIRST CHURCH

You are Always Welcome at Louisville  
First Church

24th and Howard Streets

LOUISVILLE, KENTUCKY

REV. ORVILLE L. MAISH

Pastor

Residence, 2335 Date Street

The Friendly Church

## CLENDENIN CHURCH OF THE NAZARENE

CLENDENIN, WEST VIRGINIA

REV. O. O. MILLS . . . . . Pastor

L. L. SAMPLES . . . . . S. S. Supt.

L. G. CHANDLER . . . . . Pres. N. Y. P. S.

MRS. FAYE SAMPLES . . . . . Pres. W. F. M. S.

"A Friendly Church With a Hearty Welcome"

## INGLEWOOD

### CHURCH OF THE NAZARENE

Gallatin Road and Sunnymead Drive

Sunday School . . . . . 9:30 A.M.

Divine Worship . . . . . 10:45 A.M.

N. Y. P. S. . . . . 6:45 P.M.

Evangelistic . . . . . 7:30 P.M.

Prayer and Praise, Wednesday . . . . 7:30 P.M.

**EVERYBODY WELCOME**

REV. R. J. SMELTZER, Pastor

## ATLANTA FIRST CHURCH OF THE NAZARENE

REV. CHARLES STRICKLAND

Pastor

## MIAMI CENTRAL CHURCH OF THE NAZARENE

REV. HAROLD GARDNER, Pastor

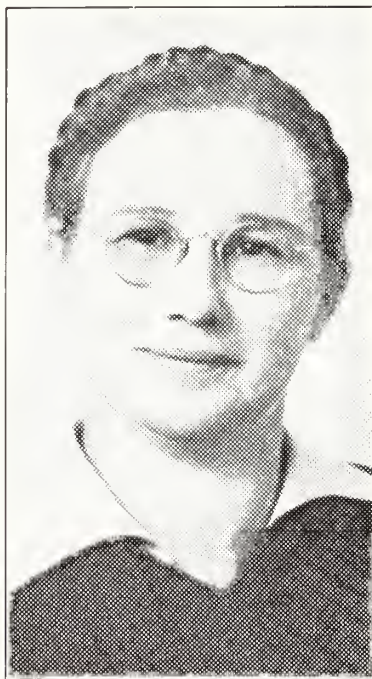
Our Support and Prayers for Trevecca

## FLORIDA STATE CLUB

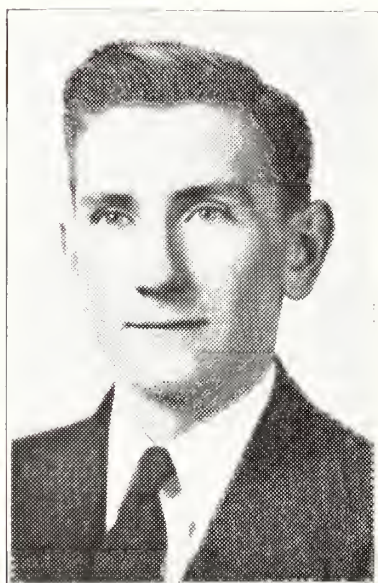
The Land of Flowers and Sunshine

# Davis Creek Church of the Nazarene

A LOYAL SUPPORTER OF TREVECCA



REV. FLORENCE WALLING  
Pastor



ARNOLD ODELL  
N. Y. P. S. President



MRS. ISABLE BAILEY  
W. F. M. S. President

# THE ALABAMA DISTRICT

REV. E. D. SIMPSON

District Superintendent

We are Whole Heartedly Supporting Dr. Mackey and  
Trevecca Nazarene College.

## DISTRICT N. Y. P. S.

### OFFICERS

LEON CHAMBERS

President

JOHNNIE RUTH JACKSON

Secretary

JEANETTE TAYLOR

Treasurer



LEON CHAMBERS

# T R E V E C C A N A Z A R E N E C O L L E G E

LOCATED IN THE ATHENS OF THE SOUTH

The fastest growing school in the Church of the Nazarene with a safe and sound basis and a firm financial foundation.

## OUR AIM

To Be Deeply Spiritual and Build Christian Characters

Trevecca is the first line of defense in the Church of the Nazarene in the Southeastern Educational Zone

Every member of the Faculty and Board of Trustees an earnest Christian.



COLLEGE, A.B.  
SCHOOL OF RELIGION, TH.B.  
FINE ARTS  
HIGH SCHOOL



Write for Catalog Today      A. B. MACKEY, President

"The Sun Never Sets on Trevecca Students"

# MCCORD OPTOMETRIST

315 FIFTH AVENUE, N.

NASHVILLE, TENN.

Eyes  
Scientifically  
Examined



L. G. McCORD



J. W. McCORD



J. T. McCORD

Frames  
Correctly  
Fitted

If not able to come to the Office, Phone 6-0304

TERMS IF DESIRED

Member Nashville Academy of Optometry

## ALLOWAY BROTHERS CO.



PROVISIONERS



TABLE TEST

POULTRY-EGGS-MEAT

## PHILLIPS & BUTTORFF MANUFACTURING CO.



Everything for Dining  
Room, Kitchen and  
Nursery



ENTERPRISE  
STOVES, FURNACES AND  
STOKERS



Established 1858

217-23 3rd Ave., N.

Nashville, Tenn.



"THE GOSPEL"  
 IN  
 SERMON • SONG • ART

EVANGELIST CLYDE B. RODGERS  
 Care Trevecca Nazarene College, Nashville, Tenn.

NEWPORT FIRST  
 CHURCH OF THE NAZARENE

REV. R. L. IHRIG, Pastor

BIRMINGHAM, NORTH  
 CHURCH OF THE NAZARENE

REV. MRS. J. E. MORRIS, Pastor  
 MR. J. E. MORRIS, S. S. Supt.  
 MRS. W. J. BRAKEFIELD, Pres. W. F. M. S.  
 DOROTHY BRADFORD, Pres. N. Y. P. S.

FLORENCE, CHURCH  
 OF THE NAZARENE

FLORENCE, ALABAMA  
 J. D. REID, Pastor  
 MRS. J. D. REID, Pres. W. F. M. S.  
 C. L. OLIVE, S. S. Supt.  
 DELAINE PATRICK, Pres. N. Y. P. S.

PADEN CITY  
 CHURCH OF THE NAZARENE

PADEN CITY, WEST VIRGINIA

COLUMBUS, MISSISSIPPI  
 CHURCH OF THE NAZARENE

REV. J. A. RUSSELL, Pastor

ALABAMA CLUB

"We then as workers together with them."



**BEASLEY AND SONS  
COMPANY**

SASH, DOORS, PAINTS, GLASS  
KIMSUL INSULATION

147 Third Ave., N. Nashville, Tenn.

**LEHMAN  
BROTHERS**

QUALITY  
GROCERIES



PHONE 6-5836

Murfreesboro at Elm Hill Road

**BENSON  
PUBLISHING CO.**

"Songs of Amazing Grace"

JOHN T. BENSON . . . . . President  
RICHARD GUNN . . . . . Vice-President

**M. E. DERRYBERRY  
COMPANY**

AND  
SPOT CASH COMPANY

Wholesale Grocers Nashville, Tenn.

Compliments of  
**RED ACE PETROLEUM CO.**  
NASHVILLE, TENN.

Compliments of  
**NEELY, HARWELL & CO.**  
Wholesale Dry Goods and Notions

See White and You'll See Right  
**DR. J. H. WHITE  
DR. CALLIE MAE WHITE**

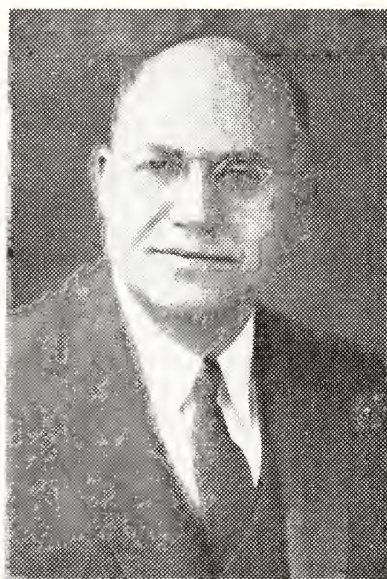
501 Hitchcock Building  
Over Liggett's Drug Store Phone 6-5970

**CAPITOL CITY MATTRESS  
COMPANY**

"Good Quality Felt Mattresses at All Dealers"

# WEST VIRGINIA DISTRICT

EDWARD C. ONEY	District Superintendent
A. J. FRANK	District Treasurer
JOS. F. MORGAN	District Secretary
C. D. TAYLOR	Chairman District C. S. Board
MRS. EDWARD C. ONEY	District W. F. M. S. Pres.
JOHN R. DONLEY	District N. Y. P. S. Pres.



Number of Churches

58

## MEMBERSHIP

CHURCH MEMBERS	4010
SUNDAY SCHOOL	7958
N. Y. P. S.	1534
W. F. M. S.	1163

WE ARE FOR TREVECCA COLLEGE 100 PER CENT

# KENTUCKY DISTRICT CHURCH OF THE NAZARENE

May God Richly Bless Trevecca Nazarene College



"Trust in the Lord and He will bring it  
to pass."



REV. L. T. WELLS . . . . .	District Superintendent
MRS. L. T. WELLS . . . . .	W. F. M. S. President
REV. C. R. THRASHER . . . . .	N. Y. P. S. President
REV. O. L. MAISH . . . . .	Chairman C. S. Board

"Delight thyself in the Lord  
and He will give thee the  
desires of thy heart."

# FIRST CHURCH OF THE NAZARENE

923 West Graymont Ave.  
BIRMINGHAM, ALABAMA

REV. RAY HANCE

Pastor

' 'THE FRIENDLY CHURCH' '

## MISSISSIPPI DISTRICT CHURCH OF THE NAZARENE

REV. CECIL KNIPPERS  
District Superintendent

REV. L. C. MILLER  
Chairman C. S. Board

REV. L. S. POLK  
N. Y. P. S. Pres.

MRS. CECIL KNIPPERS  
W. F. M. S. Pres.

## CALENDAR

Sept. 16, Tennessee District Assembly  
Sept. 17, Zone Camp Meeting  
Sept. 29, Registration Fall Term  
Nov. 2, Uncle Buddie's Coronation  
Day  
Nov. 12, Freshman-Sophomore Ban-  
quet  
Nov. 13, Founder's Day  
Dec. 17, Maurice-Wilson Wedding  
Dec. 18, Christmas Holidays  
Feb. 3, Board Meeting  
March 8, Fire Destroyed Ad. Bldg.  
March 19, Registration Spring Term  
March 25, Tenn. Preacher's Meeting  
June 6, Baccalureate Sermon  
June 9, Graduation Exercises

# CONGRATULATIONS

Trevecca College and the Darda Staff. Our Prayers and Finances are behind you.

## FIRST CHURCH OF THE NAZARENE

Central Avenue at Florida Street

CHARLESTON, WEST VIRGINIA

Our Motto: "Purity and Power"



GEORGE O. ARMSTRONG  
Sunday School Superin-  
tendent



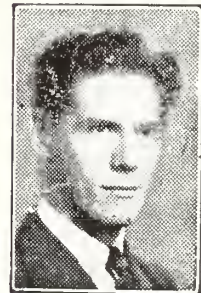
A. J. FRANK  
Pastor



MRS. CHARLES M. RANSOM  
W. F. M. S. President



MISS JEANETTE SHREEVES  
N. Y. P. S. President



SHURAL KNIPPERS  
Minister of Music

"The Church Where You are Never a Stranger"

We are proud of our students from First Church—Eva Ransom, Patricia Carte, Joe  
Songer and Chauncey Ellis.

# GRACE CHURCH—NASHVILLE



REV. STRICKLAND  
M.A., B.D.

I know of a church at the edge of the town  
Where heaven and earth seem to blend;  
For within the wide door waits the Christ we adore  
With a blessing for all who attend.

They come to the church at the edge of the town  
And join with the worshipping throng,  
And tomorrow you'll face with a confident grace  
And a faith that is steadfast and strong.

REV. S. W. STRICKLAND	.....	Pastor
CROCKETT SMITH	.....	S. S. Supt.
MRS. S. W. STRICKLAND	.....	Pres. W. F. M. S.
MRS. RUTH BYRD	.....	Pres. Esther Carsons Winans
MRS. J. D. IRWIN	.....	Pres. Y. W. F. M. S.
MISS RUBY HUGHES	.....	Pres. N. Y. P. S.
A. D. HAWKINS	.....	Pres. Hi. N. Y.

"The Friendly Church at the Edge of Town"

# SOUTHSIDE CHURCH OF THE NAZARENE

"The Church With a Welcome"

MIAMI, FLORIDA

The Church You Will Want to Visit When in Miami

MILES A. SIMMONS, Pastor

MILDRED JOHNSON, Secretary



**ELLEN DUNKUM**  
Song Evangelist

954 Strouse Ave.  
NASHVILLE, TENN.

PATRONIZE  
OUR  
ADVERTISERS

THE SUN NEVER SETS ON TREVECCA  
STUDENTS

**World's Largest Publishers**

THIS BOOK DESIGNED AND PRINTED BY

*Benson*

PRINTING COMPANY ☆ NASHVILLE

**of College Annuals**







Special 15954  
LD  
5356  
.T75  
AUTHOR  
1943  
TREVECCA NAZARENE COLLEGE  
TITLE  
The Darda

Special 15954  
LD  
5356  
.T75  
1943

Trevecca Nazarene College  
The Darda

