

**DARDA**



Mackey



Digitized by the Internet Archive  
in 2014

<https://archive.org/details/darda1942trev>





# Again The D A R D A



YEARBOOK PUBLISHED BY THE STUDENTS  
AND FEATURING IN WORD AND  
PICTURE THE YEAR'S ACTIVITIES

TREVECCA NAZARENE COLLEGE  
NASHVILLE, TENNESSEE

RUBY LEE NEELY, Editor

HOMER J. ADAMS, Manager

# DEDICATION . . .



Professor L. Paul Gresham is genuinely Christian. His home life affords him a background that is distinctly religious. Most of his educational privileges came through holiness schools. Now, as he would say, "to pay, in a sense, the debt I owe," he has given time, talent, and his very life to Trevecca. In his work he is outstandingly intellectual, unceasingly energetic, and tirelessly thorough. He moves quietly, with a most unassuming manner, into the lives of us students with a personal interest that chides professionalism. His well-founded convictions usher him along the "noiseless tenor of his way," never lacking charity toward those of contrasting opinions. Never self-asserting, always faithful in discharging responsibility, he stands among us a MAN, capable of being followed. To him the student body and the annual staff appropriately dedicate the 1942 Darda.

We have endeavored to present in these pages a true picture of TREVECCA as it has overcome new difficulties, attained greater heights, and added another glorious year to its store; and we have tried to portray the spirit of our school that makes her to us something more than just a school.

1942

*This Year*





*at* T R E V E C C A





ALEXANDER BENJAMIN MACKEY



# TREVECCA'S MAN OF THE HOUR



Almost if not altogether unique in the history of education among holiness colleges in modern times are the personality and contributions of President A. B. Mackey of our own institution.

As a student over a period of years in a number of the foremost universities of America, his chief concern was to seek out knowledge that was most practical and courses of action that were most honorable, whether to do so was popular and conventional or not. His phenomenal accomplishments as a teacher and administrator have been achieved through the conscious and consistent observance of the same simple rule of life. With him, fanfare, display and a program of the spectacular have no value in themselves; their sole *raison d'être* is to serve the practical end of increasing his own and his institution's usefulness, thereby promoting both right being and efficient doing among all who come under the influence of Trevecca Nazarene College.

The result of the operation of a college in accordance with this philosophy is a new, a rehabilitated, Trevecca. We do not believe that present conditions in the institution exhibit a loss in spirituality through the new emphasis on utility. Rather it is our feeling that the recent gains in financial strength, achieved through rigid adherence to a practical economy, have given the college a new prestige in our community, among the people on our educational zone, and throughout the Church of the Nazarene which has enlarged and intensified the sphere of our spiritual radiance.

Some phases in the development of this rehabilitated Trevecca are well known to most of

our constituency and friends. The year 1941-'42 marks the transition of the institution from junior to senior college standing. We take signal

pride in the fine class of A.B. and Th.B. graduates now going from our halls to emulate the example of our president and thus to perpetuate the ideal of the new Trevecca. Helping to make possible this expansion of our program to the four-year-college level, is the new building, to be entirely completed at least by the opening of school in September, 1942. This building is one of the largest and finest to be found on the campus of any holiness college. In addition, the area of the campus site has been expanded until it is now the largest of the college campuses of the Church of the Nazarene. The added acreage is enabling us to develop adequate playground facilities as well as to sell lots in appropriate places for the building of homes and the molding together of an ideal college community. This should interest a large group of prospective home builders who are also interested in finding a wholesome, Christian atmosphere.

What Christian parent would not be attracted by the opportunities offered for the education of children in this center of Christian faith and workable idealism?

What Christian young person will not see here the answer to his queries and the object of his quest for a college with holiness ideals as well as high standards of scholarship and academic attainment?

We submit these questions to ministers and laymen, to young and old, throughout our great Southeast.





GIRLS' DORMITORY

To us these scenes mean more than mere buildings. Memories of many happy days are connected with them. It is here that we form new friendships which enrich our lives; solve our

problems together; and rejoice with each other over spiritual victories. Fun and laughter is by no means neglected in dormitory life. We live as one big family—to us it is "home."

BOYS' DORMITORY





# THE STRENGTH OF FRIENDSHIPS

It can't be bought.  
It won't be sold.  
It isn't formed in a day or a week.  
It radiates from hearts who're willing to care,  
and bear, and share.  
It only comes  
To those who seek it.  
It doesn't linger where it isn't needed;  
Yet it yields no coolness though not incited by  
words, and gifts, and flare.

It breeds no wars,  
Nor engenders strife.  
It's the foe eternally of hate and greed.  
From it men never fear danger in shops, or  
homes, or air.  
Love's its weapon—  
"For others," its creed.  
Its conquests are never effected en masse;  
They come through no armies, excited by songs,  
and drums, and blare.

In college years  
Its ties bind strongest.  
'Tis then its warmth should environ us all.  
For what's more noble, when youth meets age,  
than to dream, and plan, and dare?  
In sterner life,  
Too, we must guard it—  
This something that wealth may not yield, nor  
fame—  
It towers e'en yet a timeless treasure, 'mid storm,  
and harm, and snare.

What is it called?  
Why, how simple 'tis!  
It's what people have when they know frankly  
well  
Who their fellows are—in virtues, follies, faults  
—yet love, and bear, and care.  
It's our friendship,  
God's gift to us here.

—L. PAUL GRESHAM.





Rigsbee, Wendell, Welch  
**THE TRUMPETERS**

**THE COLLEGE GIRLS' TRIO**

Durham, Whalen, Bradley

**VIOLINIST**

Rigsbee





# IN THE REALM OF MUSIC

Musical education plays a major part in the life of Trevecca Nazarene College. Through the well-organized program supervised by Professor and Mrs. D. A. Yarbrough, all the students learn to love and appreciate the beautiful hymns and classical selections. Individual training is given in voice and piano. He who passes certain rigid tests in either field may be awarded a certificate. Musical organizations of inestimable value are the Ladies' Glee Club, Men's Glee Club, Orchestra, and Chorus. This year the Chorus, which is composed of almost one hundred mixed voices, presented the cantata, "Ruth," in several of the Nashville churches. Besides the larger groups, there are many soloists, trios, quartets, accordionists, pianists, violinists, and trumpeters who serve to enrich the campus life. Music eliminated—Trevecca College meaningless.



Above: Bernice Bradley in voice certificate recital.

Below: The Ladies' Glee Club.







OFF FOR CHRISTIAN WORK

A CAMPUS PRAYERMEETING





# RELIGIOUS ACTIVITIES

The unusual spiritual atmosphere at Trevecca is felt by the visitors as well as by the students who make it possible by their sincere Christian lives. Along with their literary training an hour is devoted to chapel where all meet for worship. It is here they listen to Dr. Mackey's stirring messages which help and inspire them in their preparation for Christian work. Twice each week Rev. H. H. Wise, Pastor of the First Church of the Nazarene, lectures and preaches on practical themes.

Each Tuesday night all the students come together to get in touch with God

at the regular prayer service. On Wednesday night they hear soul-stirring messages on missions. The Holiness League, an auxiliary of the National Association for the Promotion of Holiness, meets each Thursday night. On Friday and Saturday nights they listen to wonderful sermons from the student preachers.

Too much could not be said about the Christian workers and their ministry in the city and neighboring towns. Each week-end one hundred or more Trevecca students carry the gospel to approximately one thousand persons.







SCIENTISTS IN THE MAKING



# THIS MATTER OF BEING EDUCATED

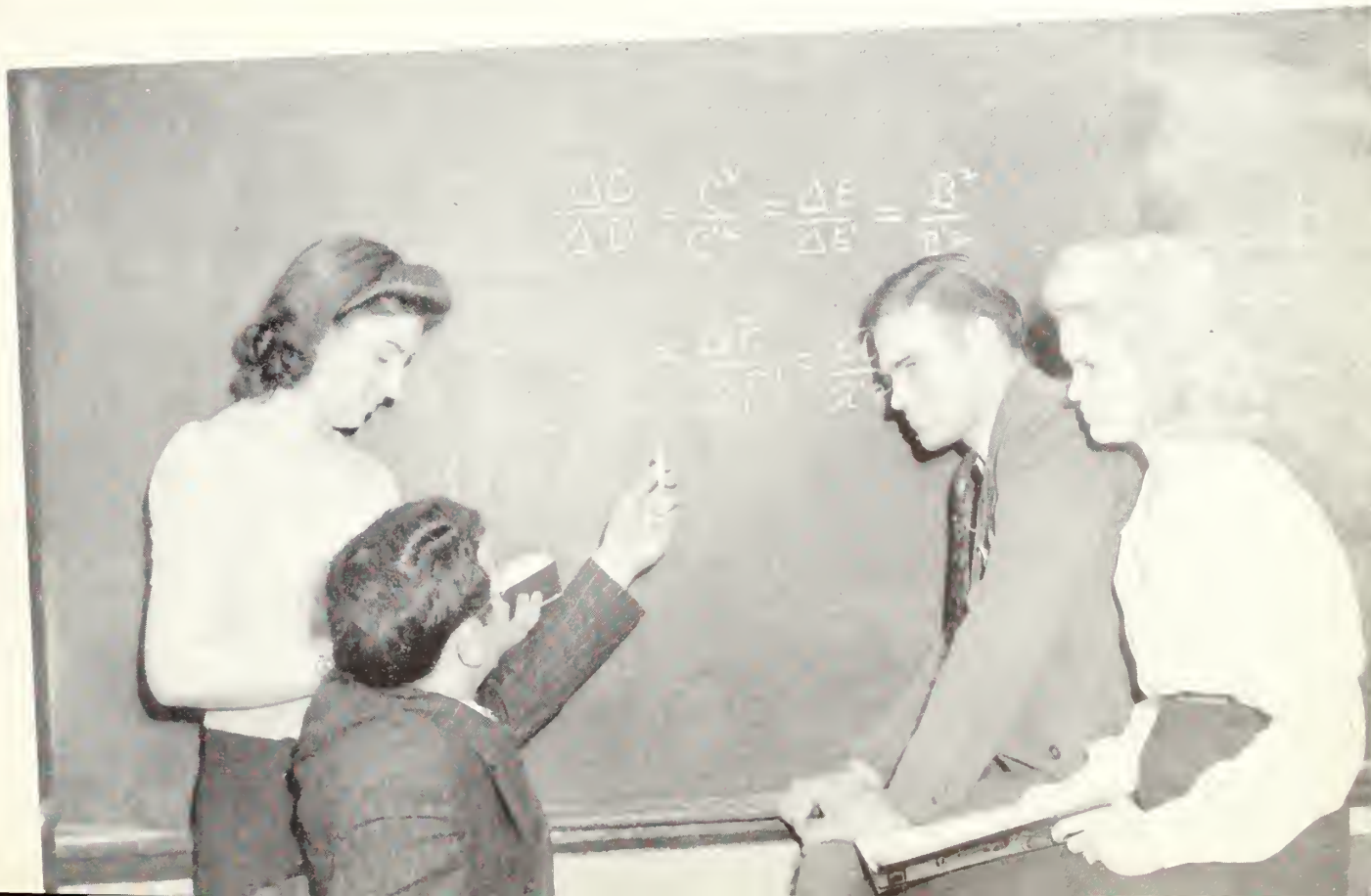
An education is the acquired ability to do well the things that need to be done. If a person could know the things that he would need to do, it would not be necessary to learn to do so many that never become necessary to do; however if we could know beforehand what the future holds, a great deal of time could be saved, but since we do not know just what we shall be doing a few years from now, and since we do not know that the skill we acquire today will be necessary with the inventions of tomorrow, the best type of education is the building of a broad foundation which enables us to do or to learn how to do almost anything. In building this broad foundation we can be sure that to learn how to get along with people is necessary for almost anything in life. Doctors, lawyers, and preachers may be well qualified in their special subjects and yet fail if they cannot make friends. There is probably no better place to get training for life with others than in a boarding school.

Economy is something anyone should know because of the problem of living which includes financing home and business; in fact, every per-

son has something to do in wealth getting and wealth using. Possibly the training in financing one's college education might build a foundation for a great business career.

It is generally agreed that an education is a great enterprise. If the statement is true a person cannot be educated by shutting himself away from the world and studying books any more than he can become a successful swimmer away from the water. A college education is probably most profitable for a young person in the face of a world crisis like today. People are now tempted to make money rather than go to college, but what money is made, a depression may come and take away—stocks and bonds can decrease in value and banks can break and the entire nation can be exploited by an enemy nation, but a trained mind and trained hands will always be in demand. A well-rounded Christian education can win in any emergency of life and even for the life hereafter. I believe this thing of being educated is a thrill of a lifetime.

A. B. MACKAY.





## OUR NEW BUILDING

The Alumni Building—attractive, substantial, modern, and efficient in design and construction. It contains a chapel, laboratories, a library, and classrooms.

The chapel, including balconies, will seat approximately eight hundred persons. The library reading room is 30x80 feet, and will accommodate about one hundred and twenty students at one time. There are two library stack rooms ample for our purposes for some time to come. Other facilities are in proportion to meet the demands of our theological and college departments for a student body of four hundred.



# EARNING OUR EXPENSES

"They fail, and they alone, who have not striven."

The door of opportunity stands open to those inspired by the burning torch of high aspirations to reach a predetermined goal. Trevecca affords many opportunities for a student to work his way through school. Most of the work in our library, dining hall, and kitchen and on

our campus is carried on by student labor. Even in our building program the students play an important part. With willing hearts and willing hands and with a determination to reach our goal, we are able to help our school while helping ourselves. The benefits gained by our own efforts may determine the success of our future.

Ready and eagerly waiting to serve to students the delicious hot food which our cafeteria affords.







## HIKING

Outdoor exercise is encouraged at Trevecca College, and nothing is more healthful than hiking. With a camera in tow students strike out across the country to Peabody Lodge or old Fort Negley. The exhilaration of the stiff exer-

cise in the cool air lifts the spirits of the young people so that they are prepared to face graver matters. Hiking, whether over green fields or through white snow, is one of our favorite forms of recreation.







## WHEN GOOD FELLOWS GET TOGETHER

Every night when some two hundred and fifty young people climb into their respective beds, they pull over them the covers of a memory-filled day. In the darkness they ponder with drowsy minds over events that will cause them to remember Trevecca and its friends forever. Perhaps it was only a friendly chat after lunch, or a group of girls gathered in a chummy conference—it might have been an hour at the Rose Room, or a lesson thoroughly learned. Into the past weekend their thoughts may turn in those last wakeful moments before sleep overtakes weary, relaxed bodies, and the events will gradually fade into peaceful dreams.











A CONFERENCE WITH DEAN SNELL

For every problem, no matter how large or small, we find interested, sympathetic understanding from Professor Snell, Dean of the College.

PRESENTING THE  
FACULTY AND CLASSES



**A. L. SNELL**  
Ph.B., B.S., M.A.  
Dean of Trevecca Nazarene College  
Psychology Education

**LILA THRASHER MACKAY**  
A.B., M.A.  
Modern Languages, History

**MARTHA DeWITT GRESHAM**  
A.B., M.A.  
Biological Science, High School  
Home Economics

**L. PAUL GRESHAM**  
A.B., M.A.  
Principal of High School  
Chemistry, History

**ALTA LINDSAY REDFORD**  
B.S., M.A.  
High School Science, Mathematics

**M. E. REDFORD**  
B.S., M.A., B.D.  
Dean of School of Religion  
History, Theology

**AMY L. PERSON**  
A.B., M.A.  
Registrar  
English, Bible

**LAVELLE BERRY YARBROUGH**  
A.B.  
Piano, High School Spanish

**D. A. YARBROUGH**  
B.S., A.B.  
Head of Music Department  
High School History

# MEMBERS OF THE FACULTY



# MEMBERS OF THE FACULTY

**FERNE DOGGETT SHELTON**  
B.S.

Art, High School English

**L. D. SHELTON**  
Dean of Men

**H. H. WISE**  
Chairman Board of Trustees  
Bible

**SADIE AGNEW JOHNSON**  
A.B., M.A.

Editor of Messenger  
Mathematics, Theology

**NINA MAE WELLS**  
Commercial

**KOY WRIGHT PHILLIPS**  
Th.B., B.S.  
High School English

**MILDRED FARIS McDOWELL**  
Bookkeeper

**ROY P. GOMER**  
Superintendent of Work

**ADRON E. HOLLINS**  
Dean of Women

**MRS. M. A. MACKEY**  
Principal of Grade School

**ELIZABETH THOMPSON SPRUILL**  
Assistant Grade Teacher

**BESSIE SEAY**  
R.N.  
Nurse



# CLASS OFFICERS



## COLLEGE SENIORS

SAMUEL P. VANN	President
NEIL RICHARDSON	Vice-President
RUBY LEE NEELY	Secretary
NORA DEAN GILLIAM	Treasurer

## COLLEGE JUNIORS

ELOISE DICKINSON	President
EUDON LATHAM	Vice-President
MONTINE MAYHAN	Secretary
LOTTIE BLACKBURN	Treasurer

## COLLEGE SOPHOMORES

HOMER ADAMS	President
GLADYS OWEN	Vice-President
SHIRLEY LEE	Secretary
GLEN STOVALL	Treasurer

## COLLEGE FRESHMEN

CARL ROSS	President
LEON CHAMBERS	Vice-President
LOUISE SHOAF	Secretary
JOHN R. BROWNING	Treasurer



# THE COLLEGE





**HIGH SCHOOL SENIORS**

J. B. ROSE ..... President  
 WILMA MOORE ..... Vice-President  
 EDITH PAUGH ..... Secretary  
 MARION HAWKINS ..... Treasurer

**HIGH SCHOOL JUNIORS**

CLARENCE MIDDENDORF ..... President  
 JAMES TATE ..... Vice-President  
 RUTH PICKLER ..... Secretary  
 EDITH WILSON ..... Treasurer

**HIGH SCHOOL SOPHOMORES**

BILL AYERS ..... President  
 SARAH SPRUILL ..... Vice-President  
 HELEN GOBER ..... Secretary  
 LUCILLE RIGGS ..... Treasurer

**HIGH SCHOOL FRESHMEN**

FAYE DOWNS ..... President  
 LULU SAMPLES ..... Vice-President  
 IRENE SUTTON ..... Secretary-Treasurer



**HIGH  
 SCHOOL**





First Row

SAMUEL P. VANN . . . . . Lake City, Fla.  
A.B., Economics

"His business ability will be proved in the future."

President, Senior Class, '42; Sales Manager, Darda, '42; President Florida Club, '41, '42; Men's Glee Club, '40, '41, '42; Parthenian Literary Society, '40, '41, '42.

RUBY LEE NEELY . . . . . Celina, Tenn.  
A.B., History

"Earnestness and faithfulness are the characterizing factors of her life."

Secretary, Tennessee Club, '40; President, Tennessee Club, '41; Vice-President, Tennessee Club, '42; Secretary, Senior Class, '42; Treasurer, Ladies' Glee Club, '42; Editor-in-Chief, Darda, '42; Honor Society, '42; Parthenian Literary Society, '39, '40, '41, '42; Christian Workers' Association, '39, '40, '41, '42.

JEANETTE TAYLOR . . . . . Calvert, Ala.  
A.B., Psychology and Education

"Faithfulness and loyalty are her marks of identity."

President, Alabama Club, '42; Christian Workers' Association, '42; Parthenian Literary Society, '42; Chorus, '42.

Second Row

ADRON E. HOLLINS . . . . . Roanoke, Va.  
A.B., English

"Dignity graces her every action."

President, Class, '37, '38, '39; Secretary, Holiness League, '40, '41; Sponsor, West Virginia Club, '40; Sponsor, S. E. A. Club, '41; Sponsor, High School Sophomore Class, '40, '41.

PAULINE CYPERT . . . . . Florence, Ala.  
A.B., Economics

"Life holds no real problems to one who smiles at trouble." Alabama Club, '39, '40, '41, '42; Reporter, Junior Class, '41; Parthenian Literary Society, '39, '40, '41, '42; Chorus, '39, '40.

MARY FLECK . . . . . Enfield, Ill.  
A.B., Psychology and Education

"Conscientiousness is the keynote of her life."

Chorus, '39, '40, '41, '42; Ladies' Glee Club, '39, '40, '41; Parthenian Literary Society, '39, '40, '41, '42; Ramblers Club, '39, '40, '41; Holiness League, '39, '40, '41, '42; Missionary Society, '39, '40, '41, '42; Christian Workers' Association, '39, '40, '41, '42.

C O L L E G E S E N I O R S





First Row

NORA DEAN GILLIAM . . . . . Algood, Tenn.  
A.B., Economics

"Her enthusiasm to work encourages others to do likewise."  
Ladies' Quartet, '39, '39, '40; Vice-President, Junior Class, '41;  
Treasurer, Senior Class, '42; Co-Editor, Darda, '42.

NEIL RICHARDSON . . . . . Springfield, Tenn.  
A.B., Economics

"His contribution to man shall not pass unnoticed."  
Editor, Darda, '38; Business Manager, Darda, '39; Assistant  
Business Manager, Darda, '42; Men's Quartet, '37, '38, '39, 40.

MYRTLE HOOPER . . . . . McEwen, Tenn.  
A.B., Economics

"When others are fainting she will still be strong."  
Tennessee Club, '38, '39, '40, '41; Vice-President, Tennessee Club,  
'40; Ladies' Glee Club, '38, '39, '40; Chorus, '38, '39, '40.

Second Row

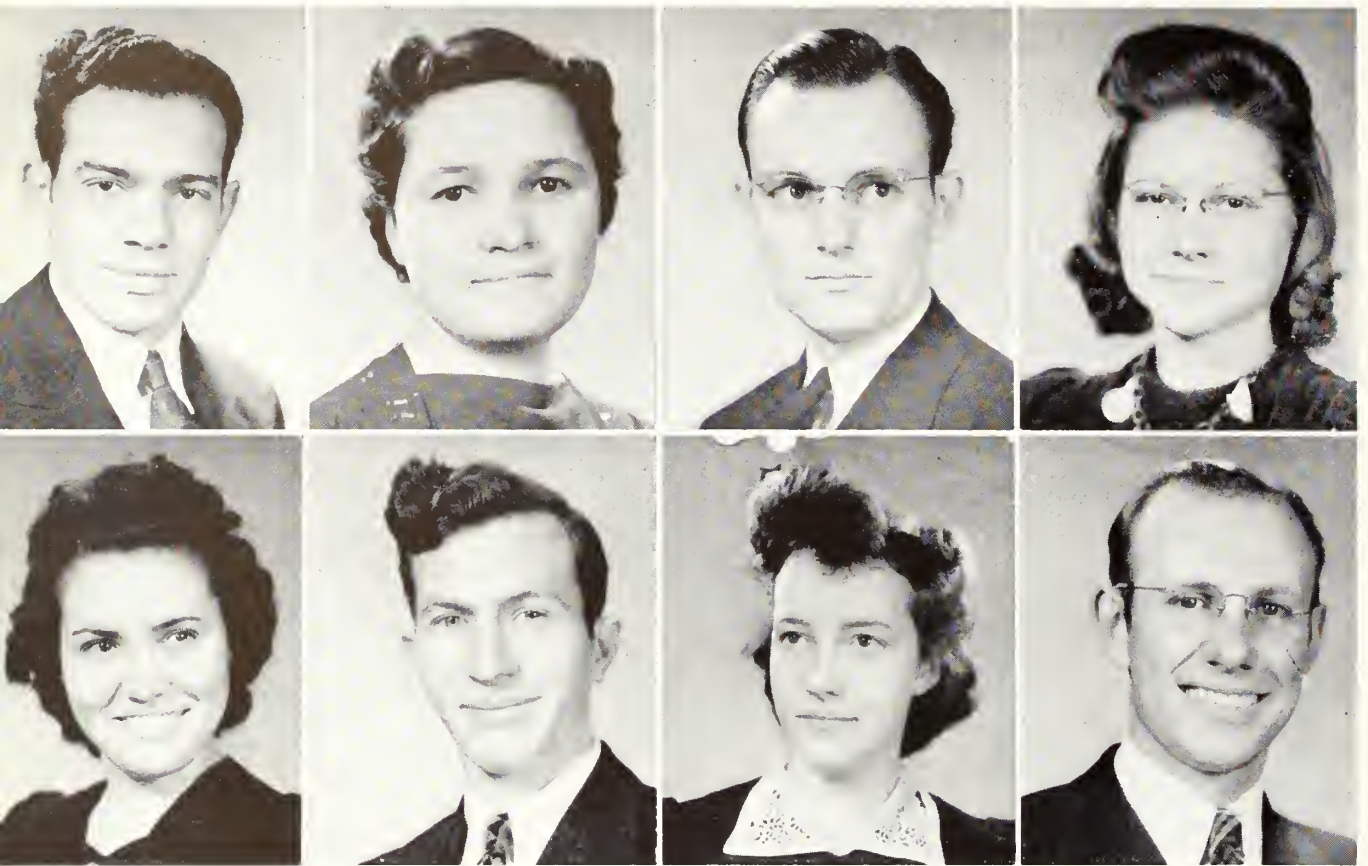
CLYDE OWENSBY . . . . . Miami, Fla.  
A.B., English

"Success awaits the good student."  
Transferred from Bethany-Peniel College; Honor Society, '41,  
'42; Darda Staff, '42; Vice-President, Christian Workers' Associa-  
tion, '42; Vice-President, Holiness League, '42; Treasurer, Florida  
Club, '42; Parthenian Literary Society, '42.

DOYLE RAE JETER . . . . . Miami, Fla.  
Th.B., Religion

"Sincerity is the compelling force of her nature."  
Parthenian Literary Society, '39, '40, '41, '42; Florida Club, '39,  
'40, '41, '42; Secretary, Florida Club, '39; President, Florida  
Club, '40; Christian Workers' Association, '39, '40, '41, '42;  
Holiness League, '39, '40, '41; Missionary Society, '39, '40, '41;  
Honor Society, '42.

# COLLEGE SENIORS



First Row

FRANK ABSTON . . . . . Albany, Kentucky  
 LUCY MAE FARIS . . . . . Victoria, Virginia  
 EUDON LATHAM . . . . . Columbus, Georgia  
 MONTINE MAYHAN . . . . . Bruce, Mississippi

Second Row

ELOISE DICKINSON . . . . . Avon Park, Florida  
 EARNEST McDOWELL . . . . . Brookville, Pennsylvania  
 ELEANOR CALLIHAN . . . . . Russell, Kentucky  
 JESSE MIDDENDORF . . . . . Nashville, Tennessee  
 (Theological)

C O L L E G E J U N I O R S





First Row

LOTTIE BLACKBURN . . . . . Robertsdale, Alabama  
 RUTH JOHNSON . . . . . Miami, Florida  
 HELEN SHIPPEY . . . . . Calhoun City, Mississippi  
 CHESTER SPECK . . . . . Alexandria, Pennsylvania  
 (Theological)

Second Floor

GUY McLEOD . . . . . Vernal, Mississippi  
 H. R. WARD . . . . . Nashville, Tennessee  
 (Theological)  
 JACKLYN WELCH . . . . . Washington, D. C.  
 RALPH HUDSON . . . . . Jasper, Alabama

# COLLEGE JUNIORS



HOMER ADAMS . . . . . Ft. Lauderdale, Fla.  
 GLADYS OWEN . . . . . Mt. Sterling, Ky.  
 RUBY JONES . . . . . Morrilton, Ark.  
 IRLENE STOVALL . . . . . Highway, Ky.  
 BERNICE BRADLEY . . . . . Hattiesburg, Miss.  
 MRS. M. E. SPRUILL . . . . . Nashville, Tenn.  
 ANNA LLOYD SAXON . . . . . Springfield, Tenn.  
 KATHLYN HOWARD . . . . . Pineville, Ky.

GLEN STOVALL . . . . . Highway, Ky.  
 NORMA MUSE . . . . . Delmer, Ky.  
 EUEL FOX . . . . . Victoria, Va.  
 MADELINE McCASKELL . . . . . Magnolia, Miss.  
 FRED A NESBITT . . . . . Paris, Tenn.  
 SHIRLEY LEE . . . . . Brewton, Ala.  
 MARY FRANCES LORD . . . . . Sanford, Fla.  
 (Picture misplaced, Miss Lord is a junior.)

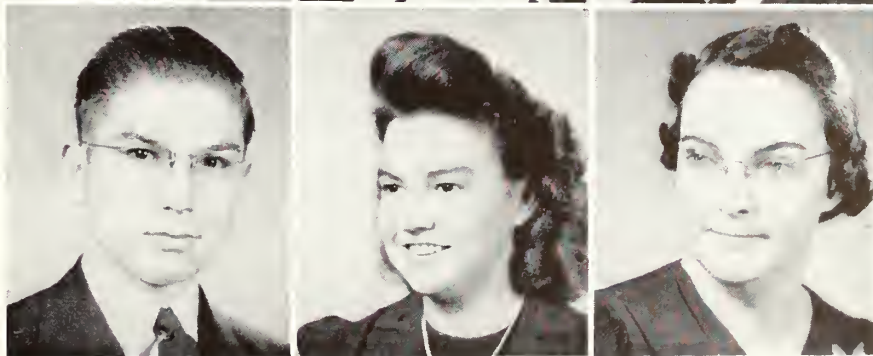
# COLLEGE SOPHOMORES



# COLLEGE SOPHOMORES

MATTIE GINTER ..... Irvine, Ky.  
 EVA BLACKBURN ..... Robertsdale, Ala.  
 HELEN HAYNES ..... Manchester, Ga.  
 CONNIE KELLY (Theological) ..... Columbia, S. C.  
 BOYD W. DAVIS (Theological) ..... Cumberland, Md.  
 LOIS DONSON (Theological) ..... Muncie, Ind.

ESTHER RUTH NOSSETT (Theological) ..... Oakland City, Ind.  
 GERALD W. EVERIST (Theological) ..... Toledo, Iowa  
 PAULINE HOWARD ..... Pineville, Ky.  
 BILLY WADE DOWNING (Theological) ..... Overt, Miss.  
 NINA MAE WELLS ..... Science Hill, Ky.





PAULINE BENTON	Ashland, Ky.	VIRGINIA RIGSBEE	West Chazy, N. Y.
RUPERT CRAVENS	Hartsville, Mo.	KENNETH TAYLOR	Brush Creek, Tenn.
FRANCES ALLEN	Moultrie, Ga.	CLARA FARIS	Victoria, Va.
ALMA MURRHEE	Starke, Fla.	WALTON HURT	Mt. Hope, W. Va.
CARROLL BRADLEY	Newport, Ky.	LUCILLE GARRELL	Lake Mary, Fla.
GLADYS KING	Waxhaw, N. C.	JOHN LAWWILL, JR.	Lexington, Ky.
ROBERT SUMNER	Miami, Fla.	RENA DUNCAN	Greeneville, Tenn.
		MARIE OVERSTREET	Nashville, Tenn.

# COLLEGE FRESHMEN

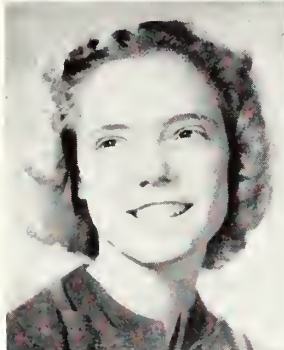


# COLLEGE FRESHMEN

CLARA LOU FULLER ..... Magnolia, Miss.  
 ANNE STRICKLAND ..... Nashville, Tenn.  
 JESSIE MAE MERCER ..... Nashville, Tenn.  
 SARA PEARSON ..... Houlika, Miss.  
 NAOMI NABORS ..... Calvert, Ala.  
 ROBERTA SAMPLES ..... Bomont, W. Va.  
 ROMA WELLS ..... Ashland, Ky.  
 ELISABETH RIGSBEE ..... West Chazy, New York

MARIE LINDSLEY  
 LORENA SHARPLING  
 MRS. ELLEN TYRE  
 EWIN WHITE  
 ROSA CROSON (Theological)  
 J. E. WARREN  
 MRS. J. E. WARREN  
 ROBERT WENDELL (Theological)

Nashville, Tenn.  
 McComb, Miss.  
 Gainesville, Fla.  
 Nashville, Tenn.  
 Hurricane, W. Va.  
 Nashville, Tenn.  
 Nashville, Tenn.  
 Johnstown, Penn.





BEATRICE BRAKEFIELD . . . . . Birmingham, Ala.  
 CHARLES MAY . . . . . Argillite, Ky.  
 MARGARET McCLAIN . . . . . Sheffield, Ala.  
 RALPH HOWE . . . . . Frankfort, Ky.  
 MARY ELLEN KNIPPERS . . . . . Florien, La.  
 WILFORD C. HAWKINS . . . . . New Albany, Ind.  
 ALENE HOWARD . . . . . Richmond, Ky.  
 ROBERT HEDRICK (Theological) . . . . . Charleston, W. Va.

LEILA DELL MILLER . . . . . Columbus, Ga.  
 J. E. FOX, JR. . . . . Victoria, Va.  
 GLADYS MILLER . . . . . Wrightsville, Ga.  
 EDWARD LAWHORN . . . . . Waycross, Ga.  
 ESTHER DURHAM . . . . . Moundsville, W. Va.  
 REO MILLER . . . . . Morenci, Mich.  
 MARY FRANCES BROWN . . . . . Meridian, Miss.  
 LESLIE JETER . . . . . Miami, Fla.

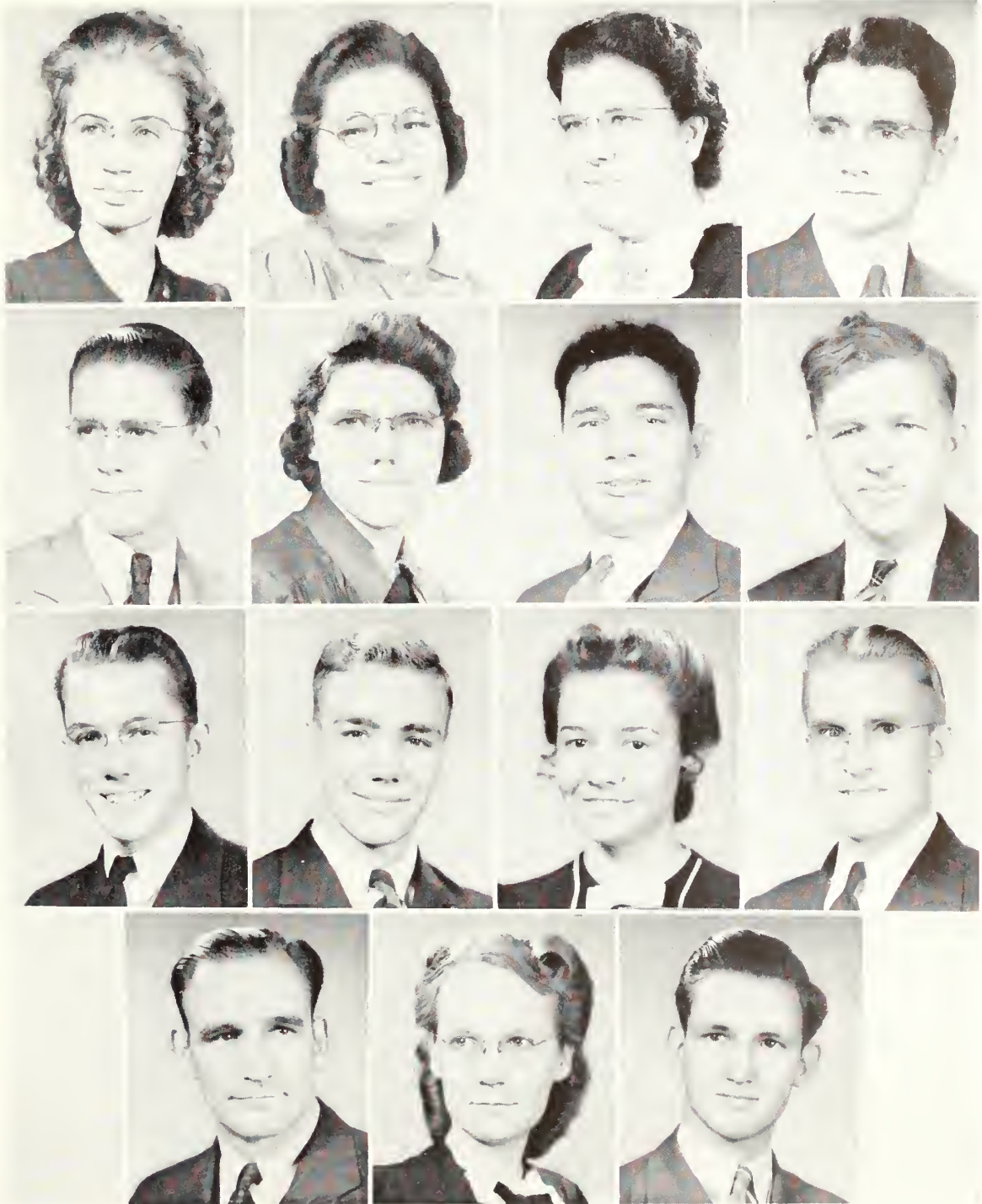
# COLLEGE FRESHMEN



# COLLEGE FRESHMEN

LOUISE SHOAF (Theological) . . . . . Winston-Salem, N. C.  
 DELIA SHAW (Theological) . . . . . Orlando, Fla.  
 MRS. H. R. WARD . . . . . Nashville, Tenn.  
 ROBERT BUSH (Theological) . . . . . Columbus, Ga.  
 GLENN CASS (Theological) . . . . . Columbus, Ga.  
 ADA MIDDLETON . . . . . Dayton, Ohio  
 ARCHIE MADISON (Theological) . . . . . Nashville, Tenn.  
 CLARENCE PATTON (Theological) . . . . . Bloomington, Ind.

LEON CHAMBERS . . . . . Fairfax, Ala.  
 JEWELL CASE . . . . . Magnolia, Miss.  
 RUTH WHALEN . . . . . Cynthiana, Ky.  
 CARL ROSS . . . . . McEwen, Tenn.  
 JOHN R. BROWNING (Theological) . . . . . Nashville, Tenn.  
 NONA EDWARDS . . . . . Miami, Fla.  
 ROBERT WIGGS . . . . . Benton, Ill.





First Row

PAUL V. RIDENHOUR . . . . . Nashville, Tenn.      ERMA TOMS . . . . . Norwood, Ohio  
 ROBERT RUTHERFORD . . . . . Orlando, Fla.

Second Row

MALCOLM NORTH . . . . . Nashville, Tenn.      GLADYS STEWART . . . . . Thomaston, Ga.  
 JOHN DAVID STAFFORD . . . . . Gainesville, Fla.

Third Row

CORDELL HUDSON . . . . . Gordonsville, Tenn.      J. DAVID BLACKMON . . . . . Nashville, Tenn.  
 A. F. HADDEN . . . . . McDonald, Tenn.

# MINISTERIAL STUDENTS



# HIGH SCHOOL SENIORS

## First Row

ROBERT CRAWFORD . . . . . High Springs, Fla.      GLEN EBY . . . . . Ft. Lauderdale, Fla.  
 "If nobody else will do it, call on me."      "My task—balancing my Gold—and budget."  
 ELIZABETH WILLIAMS . . . . . Columbus, Ga.      WILMA MOORE . . . . . Muncie, Ind.  
 "Her's was a taste for tete-a-tetes."      " . . . And the sunshine she spread was colossal, too."  
 JACK WALLING . . . . . Charleston, W. Va.  
 "He does not use his smiles sparingly, nor has he a small supply."

## Second Row

FAYE BROOKS . . . . . Old Hickory, Tenn.      MARION HAWKINS . . . . . New Albany, Ind.  
 "The waves lie still and gleaming,  
 And the lull'd winds seem dreaming."  
 EUGENE ADAMS . . . . . Ft. Lauderdale, Fla.      BEATRICE MILBY . . . . . Louisville, Ky.  
 "Up, up! my friend, and quit your books; or surely  
 you'll grow double."  
 JOHN MAURICE . . . . . Miami, Fla.  
 "Grow old along with me;  
 The best is yet to be."

## Third Row

MINNIE ASBURY HOWARD . . . . . Wilmore, Ky.      EDITH PAUGH . . . . . Beverly, W. Va.  
 "I am not lured with love where nothing lies in the fingers."  
 "Silence was but one of her many virtues."  
 VIOLA PAUGH . . . . . Beverly, W. Va.      J. RAYMOND PARKER . . . . . Laurel, Miss.  
 "Her beauty is in a task well done."  
 "A silver tongue,  
 A voice of gold."  
 J. B. ROSE . . . . . Sparta, Tenn.  
 "His praise is this,—he can be praised of none."





CLARENCE MIDDENDORF, St. Louis, Mo.  
 EVA KEYS . . . . . Winston-Salem, N. C.  
 A. D. BOONE . . . . . Jayess, Miss.  
 GLORIA McDOWELL . . . . . Newport, Ky.  
 ADRIAN ROSA . . . . . St. Louis, Mo.  
 JEWELINE COOK . . . . . Columbus, Miss.  
 LUCILLE RODGERS . . . . . Gainesville, Fla.  
 EDITH WILSON . . . . . Charleston, W. Va.

RUTH PICKLER . . . . . Faxon, Tenn.  
 MARIE TATE . . . . . Nashville, Tenn.  
 MARGARET KEETON . . . . . Ann Arbor, Mich.  
 HERBERT L. BROWN . . . . . Nashville, Tenn.  
 Hazel Lanier . . . . . Ft. Myers, Fla.  
 MARTHA BELL KINGERY . . . . . Cincinnati, O.  
 ANNE TROUT . . . . . Camden, Tenn.  
 LOUISE CRAFT . . . . . Russell, Ky.  
 VIRGINIA HOWARD . . . . . Richmond, Ky.

EULA MAE LINDSEY . . . . . Waycross, Ga.  
 LAVERNE ANDERSON . . . . . Old Hickory, Tenn.  
 DORIS FORBES . . . . . Roanoke, Va.  
 MERLE CHAPEK . . . . . Meridian, Miss.  
 WILDA MAE RUFFIN . . . . . Columbus, Miss.  
 WILLENE AGEE . . . . . Old Hickory, Tenn.  
 ETHEL VENABLE . . . . . St. Louis, Mo.  
 JOHN M. BROWN . . . . . Meridian, Miss.

# H I G H   S C H O O L   J U N I O R S



# HIGH SCHOOL SOPHOMORES

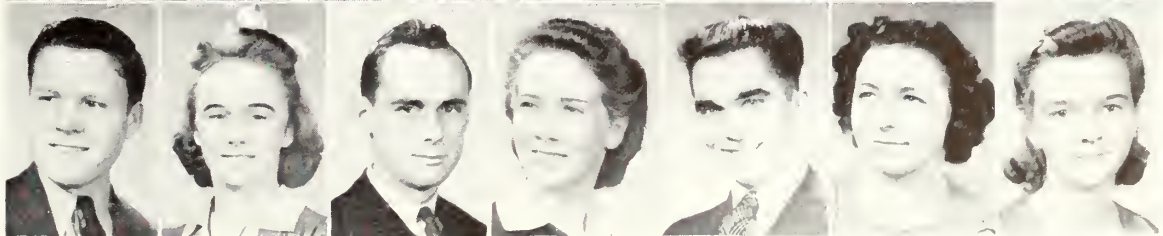
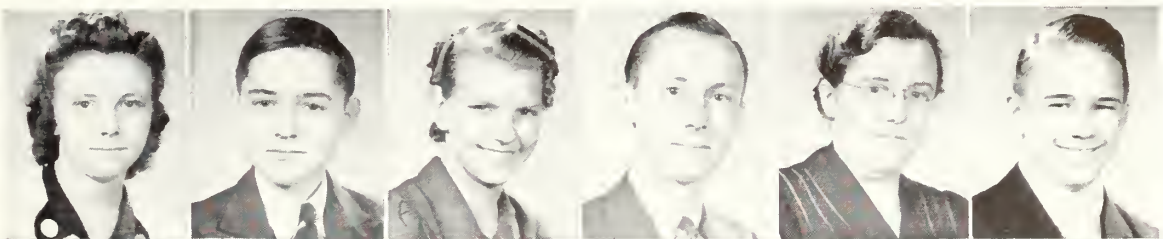


WILLIAM AYERS . . . Lancaster, Ky.  
 DOROTHY ADAMS . . . Opdyke, Ill.  
 SARAH SPRUILL . . . Nashville, Tenn.  
 TENNYSON HOWARD, Wilmore, Ky.  
 LUCILLE RIGGS . . . Anniston, Mo.  
 LOUISE THOMPSON, Ft. Myers, Fla.  
 HELEN GOBER . . . Pontiac, Mich.



# HIGH SCHOOL FRESHMEN

FAYE DOWNS . . . . . Birmingham, Ala.	LULU SAMPLES . . . . . Bomont, W. Va.	IRENE SUTTON . . . . . Old Hickory, Tenn.
JOE PARRISH . . . . . Eaton Park, Fla.	BUSTER BLANCHARD . . Jonesboro, Ark.	LEWIS SWOPE . . . . . Selinsgrove, Penn.
VERA PLETCHER . . . . . Altoona, Penn.	RAYBURN FREY . . . . . Springfield, Tenn.	MARIE C. BROCKMAN . Lexington, Ky.
WILLIAM THOMAS . . . . . Miami, Fla.	PHYLLIS BROWNING . . Nashville, Tenn.	JANE OVERSTREET . . . Nashville, Tenn.
	JAMES THOMAS . . . . . Dunbar, W. Va.	





# SPECIAL STUDENTS

CLAUDE GALLOWAY . Nashville, Tenn.  
Religion

MRS. A. F. HADDEN . McDonald, Tenn.  
Piano

JOSEPH SLAMP . . . . . Waycross, Ga.  
Voice

# GRAMMAR SCHOOL

MRS. M. A. MACKEY, Principal

Joseph Bates  
Billie Crowder  
Joe Forman  
Jessie Lee Helton  
Randall Kennedy

Curtis Kirkland  
Eva Fay Mackey  
Neva Gay Mackey  
Jean Overstreet  
Lela Patton

Jean Spruill  
Harold Lee Williams  
Esther Rae Rodgers  
Don Shelton  
Joseph Slamp

Brentson Spruill  
Clarice Spruill  
Howard Spruill  
James Spruill  
Barbara Jean Tate  
Madge Whited







THE PARTHENIAN LITERARY SOCIETY

# ACTIVITIES

The Parthenian Literary Society has endeavored to present programs which interestingly combine culture, refinement, and enjoyment.

# QUARTETS AND TRIOS



COLLEGE MEN'S QUARTET

Howe, Adams, Taylor, Stovall

COLLEGE LADIES' TRIO

Moore, McCaskell, Donson

HIGH SCHOOL BOYS' QUARTET

Walling, Hawkins, Adams, Maurice

HIGH SCHOOL GIRLS' TRIO

Craft, Thompson, Chapek



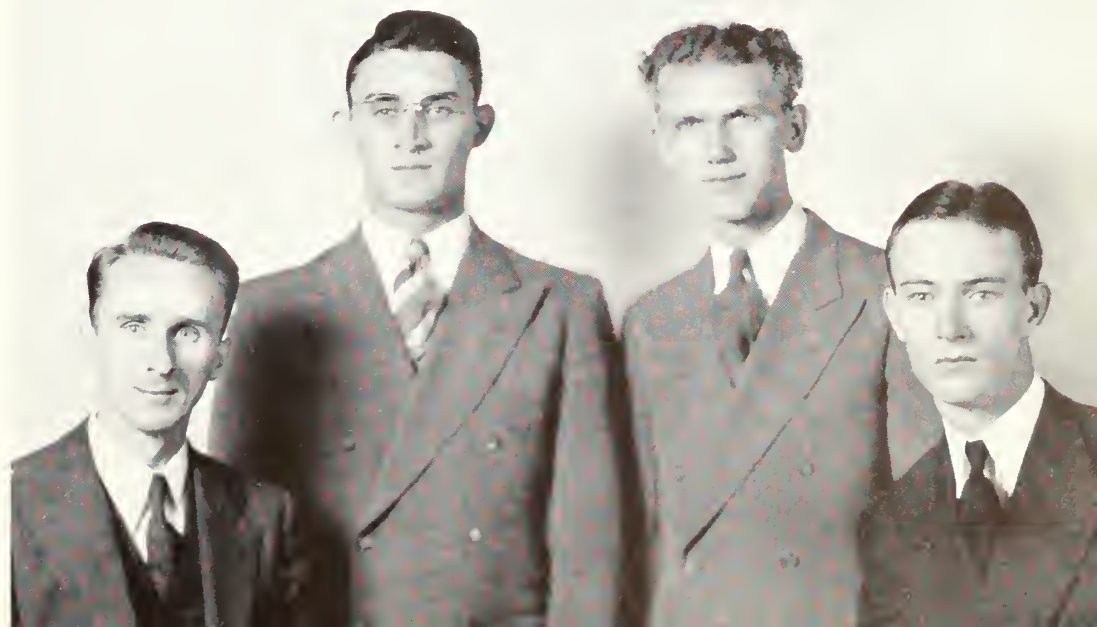


## MEN'S GLEE CLUB

"Faithful practice brings its reward as the Men's Glee Club load up for a long trip and a full day of singing." Saying good-bye isn't so bad—for the good eats will compensate.

## THE MESSENGER QUARTET

Young, Lawwill, Hendershot, Boshell





## ORCHESTRA

Our orchestra has grown until we now have a talented group of musicians which would honor any school.

## PIANO PRACTICE

The road to success is no super highway. Practice makes perfect, but it takes a lot of it.





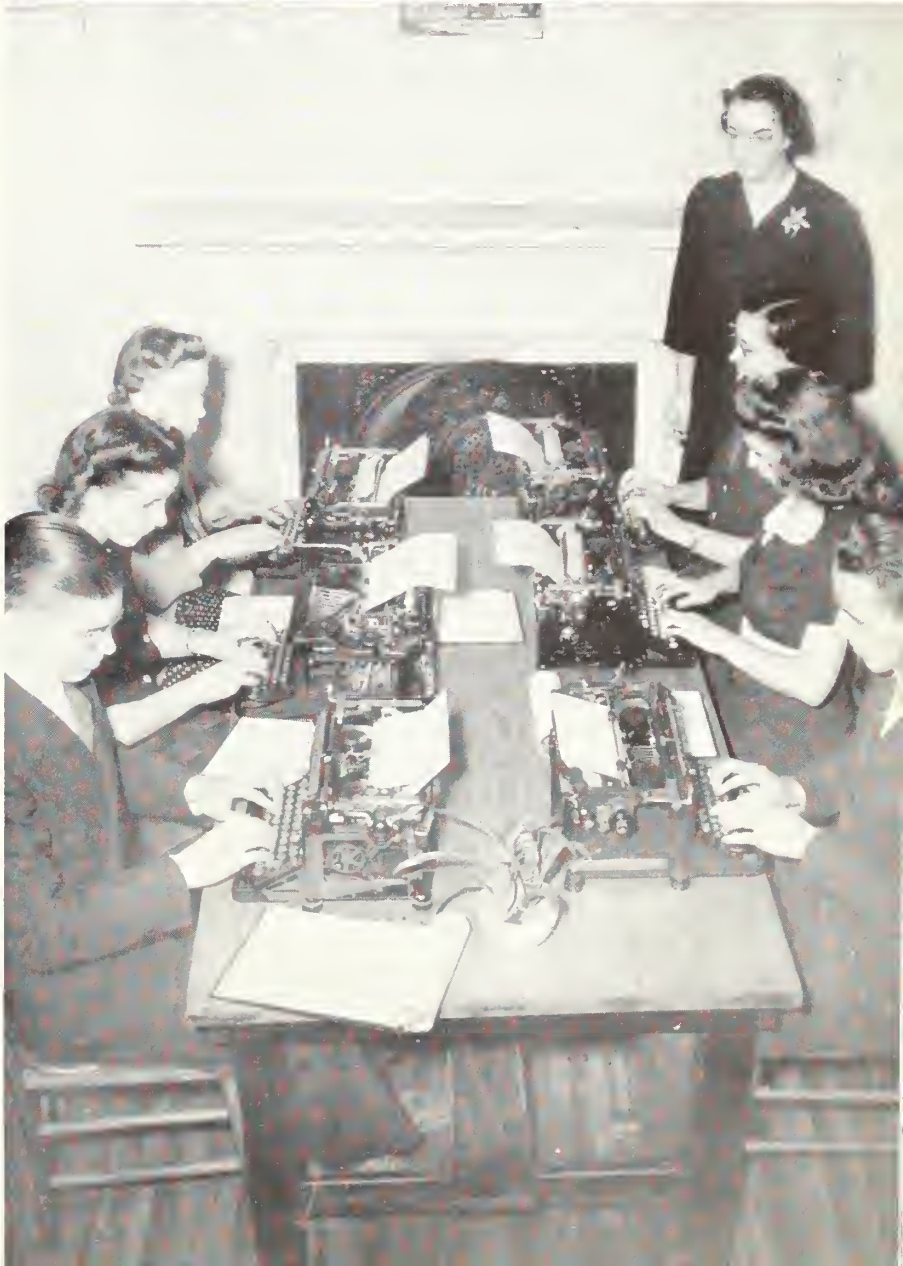
## HOME ECONOMICS

Excellent training—"She can sew a fine seam, but can she bake a cherry pie?" "Yes, she is also a good cook in the making."



## TYPING CLASS

The "hunt-and-peck" system may be all right. But these students are learning to do less "hunting" and more "pecking." The Commercial Department is a new and valuable addition to our curriculum.





## ART CLASS

There's beauty in the world, and these students are learning not only to see it, but to show it to others. Being able to appreciate art is not an ordinary characteristic, but something that requires much training.



## BIOLOGICAL SCIENCE

A young scientist explores the mysteries of the microscopic world. In the field of learning knowledge creates questions that can only be answered by further knowledge.





## OCTAVIAN LITERARY SOCIETY

The aim of the Octavian Literary Society during the current year has been to provide a high type of literary and musical entertainment, and to foster an appreciation for such entertainment among our student body.

## WE DEBATE

Pro and con—questions of momentous importance are discussed and settled as these great minds tangle in warm debate.







## CHRISTIAN WORKERS' ASSOCIATION

Christian work is the most outstanding feature of Trevecca. It is the spirit and life of the school. Each Sunday groups of happy, spirit-filled young people go out to hold services in the workhouses, hospitals, and jails. This continued Christian work is a blessing, not only to the students and the school, but to the entire city of Nashville. A thousand souls saved in a year is not unusual.

## CALLED MISSIONARIES

COME unto me.  
TARRY until ye be endued with power from on high.

GO ye unto all the world and preach the gospel.

Lo I am with you always.

These young people have received a definite call to the mission fields of Africa, India, and China. They are now making the necessary preparation and getting the proper training which will fit them for this special service.





## CAMPUS REFLECTOR

"Say, staff! Listen to this one!"

The Campus Reflector is a bi-monthly student publication which reflects humor, etiquette, news, and the social life of interest to students and their friends.

Jacklyn Welch is editor.

## THE HONOR SOCIETY

Phi Delta Lambda, the honor society of the Nazarene colleges, is represented by the Zeta Chapter in Trevecca Nazarene College. At present there are three permanent and seven associate members.



Best All-Round  
J. B. ROSE



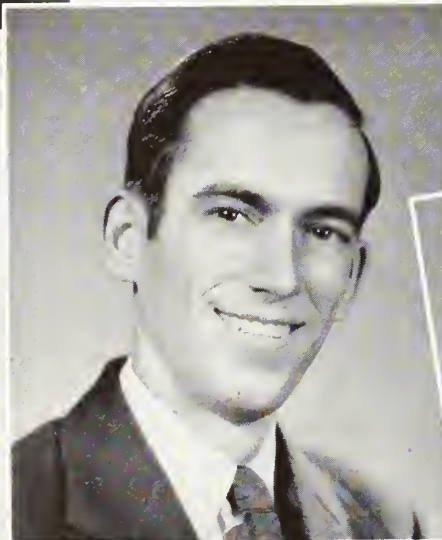
Best Student  
CLYDE OWENSBY

# WHO'S



Most Friendly  
JEWELL CASE

Most Popular  
HOMER ADAMS



Most Attractive  
J. RAYMOND PARKER







Best Student  
HELEN GOBER



Best All-Round  
RUBY LEE NEELY

# WHO

Most Popular  
RUTH WHALEN



Most Attractive  
PAULINE HOWARD



Most Friendly  
ETHEL VENABLE





# STATE CLUBS

## RAMBLERS CLUB

"No certain state for all to call our own, but we are a happy group after all."



## FLORIDA CLUB

"Cold? We guess so, 'cause we aren't used to weather like this?"



## GEORGIA CLUB

"They call us crackers, but, really, we are peaches."



## ALABAMA CLUB

"Here we rest—living up to the meaning of our state name."





### TENNESSEE CLUB

"Maybe we're hillbillies, but we're better known as 'Volunteers.'"



### KENTUCKY CLUB

"Whether you believe it or not, there IS 'gold in them thar hills.'"



### MISSISSIPPI CLUB

"The land of romance and sweet magnolias."







MRS. H. F. TATE  
Dietician

Something else new in Trevecca! This year our dining room was transformed into a cafeteria. We like it. It affords us a greater variety of food at more economical prices.

### THE ROSE ROOM

Halfway down the hill is Trevecca's own little lunch room. Proof of our enjoyment of this privilege is shown by our patronage.

# T H E C A F E T E R I A





## OUR LIBRARY



Our library has developed into a quiet, well-organized center of book research, recreational reading and study. Students who have been properly trained and are efficient and dependable in this capacity help defray their educational expenses by acting as librarians. Considering the size of our college, Trevecca's library is excellently supplied. There is an exceptional collection of rare old volumes on our shelves, many of which have been donated by friends; on the other hand, current magazines and periodicals are always available. Our library is a pleasant and profitable place in which a student may spend his time.







## IN THE DORMITORIES

It happened here that we answered September's call and entered into weeks of eternal friendships, filled by hours of

experiences with our "lived-together" fellow, and in answer to the study hall, drowsy classes, and our other campus activities.



## SOCIAL DAZE

No, not quite. Just one big family group of two hundred and fifty. From the North, the South, the East, and the West they have come until the campus resounds with their busy tread. A Georgia Cracker and a Hoosier might become acquainted, and we have heard of such developing into lasting friendship. Social life at Trevecca is more than just the Friday night visit to the Rose Room, a pleasant conversation in the reception hall, or a gaze into the fish pond. It is an everyday privilege of associating with other Christian young people, sharing their joys and helping bear their burdens.







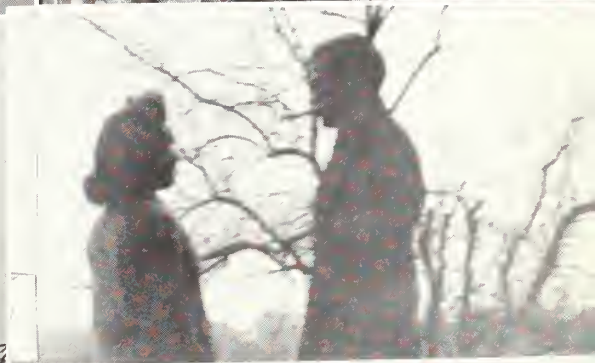
## TO AND FROM CLASSES

Obtaining an education is a serious matter, but there's always time for a friendly greeting, a word of cheer, or

help in the solution of problems—scholastic or personal.







## HERE AND THERE

1. Is this natural? Your guess is as good as mine. 2. Radioing—"There's music in the air"—making good use of her Christmas present. 3. The bus rattles, but its noise is drowned by the happy voices, as they travel the streets of Nashville. 4. "Jack of all trades," and good at all of them. 5. "A dream," at last coming true. 6. Does the sun ever set on Trevecca students? 7. Typewriters click and telephones ring as our office force efficiently discharge their duties.





## HERE AND THERE

1. After all, a preacher must practice too. 2. Loren Paul Gresham and Patsy Yarbrough. The professors have to be trained too, you know. 3. Of course beauty is only skin deep, but it requires plenty of attention. 4. "You can't do wrong and get by," this boy missed chapel. His loss—the campus' gain. 5. Don't they look happy, what could be the reason?

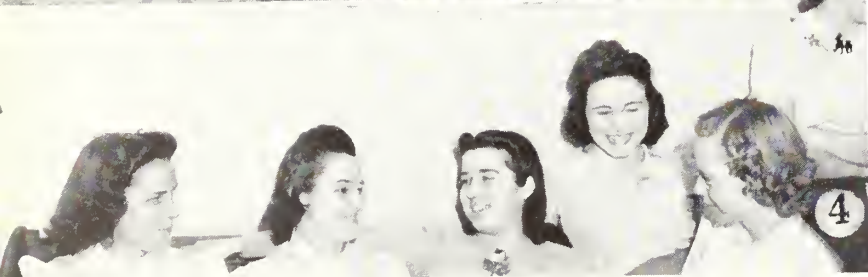




## HERE AND THERE

1. Just another sideline or should we say wash-line. 2. Here the young theologian expounds his doctrines while his locks are being shorn. 3. So you think snow is light and fluffy? Just ask this boy. 4. Freshmen think they're going places and doing things, it seems rather backward to me. 5. It's no little job to keep a furnace satisfied. 6. Are her thoughts on that book or elsewhere?





## HERE AND THERE

1. She does her part for national defense by helping maintain the morale of the army. 2. Five minutes, boys, or you'll miss your oatmeal. 3. The ups and downs of a student pastor. 4. It must be a hen party. 5. With mother and dad millions of miles away, the new student needs a big sister in this strange, new world of school.





# DARDA STAFF

DR. A. B. MACKY ..... Faculty Advisor  
 RUBY LEE NEELY ..... Editor-in-Chief  
 HOMER J. ADAMS ..... Business Manager  
 SAMUEL P. VANN ..... Sales Manager  
 NORA DEAN GILLIAM ..... Assistant Editor  
 V. NEIL RICHARDSON ..... Assistant Business Manager

LEON CHAMBERS ..... Assistant Sales Manager  
 CLYDE OWENSBY ..... College Representative  
 BILLY WADE DOWNING ..... Theological Representative  
 J. RAYMOND PARKER ..... Fine Arts Representative  
 EDITH PAUGH ..... High School Representative  
 BOB WIGGS, NONA EDWARDS ..... Stenographers



**WILSON STRASBAUGH**

Bks. 126 Ft. E.  
36th School Squadron  
Chanute Field, Ill.

**ARTHUR BATSON**

14th Recon. Squadron  
Mac Dill Field,  
Tampa, Fla.

**CADET JAMES D. THRASHER**

Air Corps Training Detachment  
Oxnard, California

**TROY COOK**

Hq. & Hq. Co., 8th Qm. B.N.  
Ft. Jackson, S. C.

**DUDLEY BURROWS**

Naval Station  
Panama Canal Zone

**PRIVATE PAUL S. HARRIS**

No picture  
Transferred to Chanute Field, Ill.  
Bks. 205 1st S. S.

**JAMES J. THOMAS**

No picture  
"B"-Bat., 11th B.N., 4th Reg. F. A. R. C.  
Ft. Bragg, N. C.

Above are the names and addresses of some of "our boys" in military service. Please put these on your prayer list and send them a card or letter occasionally.

# MCCORD OPTOMETRIST

315 FIFTH AVENUE, N.

NASHVILLE, TENN.

Eyes  
Scientifically  
Examined



DR. L. G. MCCORD



DR. J. W. MCCORD

30 Years Experience



J. T. MCCORD

Frames  
Correctly  
Fitted

If not able to come to the Office, Phone 6-0304

TERMS IF DESIRED

Member Nashville Academy of Optometry



# ALABAMA N. Y. P. S.

DISTRICT N. Y. P. S.

## OFFICERS

LEON CHAMBERS	President
REV. LINDEN SEALES	First Vice-President
REV. J. C. KELLEY	Second Vice-President
MISS EVA RAMSEY	Third Vice-President
MISS JOHNNIE RUTH JACKSON	Secretary
JEANETTE TAYLOR	Treasurer

## COMPLIMENTS

OF

## THE ROSE ROOM

LUNCHES—GROCERIES—  
ICE CREAM

J. B. ROSE, Proprietor

Operated by Trevecca  
Students

"We Boost Trevecca"

Prof. Gresham: Can you tell me anything about the great chemists of the 17th Century?  
Kenneth Taylor: They are all dead, sir.

\* \* \*

Prof. Snell: Why did you come to college anyway? You are not studying.

Jewell Case: Well, I don't know exactly myself. Mother says it is to fit me for the Presidency; Uncle, to have a good time; Sis, to get a chum for her to marry; and Pa, to bankrupt the family.

\* \* \*

Marion: Shall I take this little rug out and beat it?

Sam Vann: Hey, don't do that! That's John Brown's towel!

\* \* \*

Jack: Why didn't you shave this morning?

Chuck: I thought I did but there were six of us using the same mirror this morning, and I must have shaved some other guy.

\* \* \*

Boyd Davis: I'll bet you came from a burg where all the hicks congregate at the post office.

Bob: What's a post office?

\* \* \*

John Lawwill (Finishing a letter): I'd send you that \$5 I owe you, but I've already sealed the letter.

# THE KENTUCKY DISTRICT

AND ALL ITS DEPARTMENTS

ARE 100 PER CENT FOR

## TREVECCA NAZARENE COLLEGE



REV. L. T. WELLS, District Superintendent

REV. ORVILLE MAISH	Chairman S. S. Board
MRS. L. T. WELLS	President W. F. M. S.
REV. JOSEPH PITTS	President N. Y. P. S.



Our earnest Prayer is that Trevecca will continue her program of building  
for earnest Christian Characters.





# THE FIRST CHURCH OF THE NAZARENE

510 Woodland Street

H. H. WISE, Pastor

SUNDAY SCHOOL ..... 9:30 Each Sunday

A Department and Class for All, The Students are Welcome Here

G. H. CALLIS, Superintendent

N. Y. P. S. .... 6:30 Each Sunday

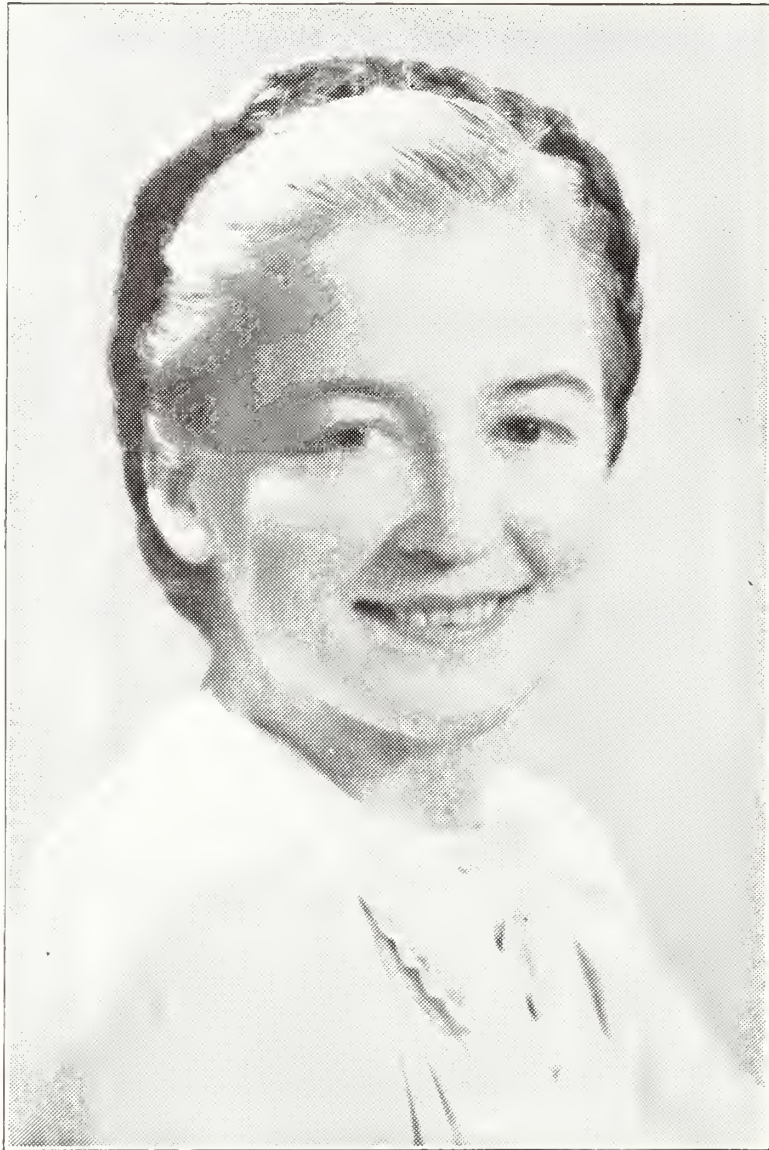
"Where the Students are Always Welcome"

JAMES A. PATE, President

Hi-N. Y. .... 6:30 P.M.

Jr. Hi-N. Y. .... 6:30 P.M.

NETTIE A. MILLER



NATIONALLY KNOWN EVANGELIST AND  
LOYAL SUPPORTER OF TREVECCA



"THE YARD OF FRIENDLY SERVICE"

# THE CASH & CARRY SERVICE LUMBER CO.

A. M. GIBBS, Manager

M. T. CLAY, Sales Manager



LUMBER • MILLWORK  
SASH • DOORS • PAINT  
AND ROOFING

A Complete Stock of High Grade  
Lumber

Call Us for Estimates

We Deliver



1203 S. Greenwood Ave.

Chattanooga, Tenn.

Phone 2-22121

# FIRST CHURCH OF THE NAZARENE

Cleveland and Worthington Aves.

CHARLOTTE, NORTH CAROLINA

Phone 3-4984

REV. HAROLD G. GARDNER

Pastor

WILMA L. BENNICK

Church Visitor



"Let the Word of Christ Dwell in You Richly in All Wisdom."

Prof. Phillips: Tell me one or two things about John Milton.

John Maurice: Well, he got worried and then wrote *Paradise Lost*. Then his wife died and he wrote *Paradise Regained*.

\* \* \*

Madeline: Have you been up before the Dean yet?

Mildred Foreman: I don't know. What time does she get up?

"Did you make the debating team?"

"N-n-no. Th-th-they s-s-said I-I-I w-wasn't t-t-tall e-e-enough."

\* \* \*

Mrs. Mackey: Students, I'm dismissing you ten minutes early today. Please go out quietly so as not to wake the other classes.

\* \* \*

Gloria McDowell: Did you pass your exam?

Kat Howard: Well, it was like this, you see—

Gloria: Shake! Neither did I!"

WE HAVE PRESENTED OUR ADVERTISERS IN THESE PAGES. THEY HAVE BEEN DEFINITE FACTORS IN THE PUBLICATION OF THIS ANNUAL AND WE KNOW THAT YOU WILL PATRONIZE THEM



# LEHMAN BROTHERS

QUALITY  
GROCERIES

PHONE 6-5836

Murfreesboro at Elm Hill Road

"CHEER UP"

MODEL LAUNDRY  
MODEL CLEANERS

D. D. CANFIELD  
Manager

Telephone 5-3114

A home without books is like a house  
without windows

## THE METHODIST PUBLISHING HOUSE

50 Years of Satisfaction

### CAPITOL CITY MATTRESS CO.

Slumber Queen Inner Spring Mattresses at All  
Good Dealers.

900 Main St.

Phone 3-0283

4—Dresses, Coats, Suits—\$1

FREE DELIVERY

5-3158

TENNESSEE DRY CLEANERS

208 Shelby Avenue

COMPLIMENTS

OF

### IMMANUEL CHURCH OF THE NAZARENE

REV. G. B. BREESE, Pastor

Onward, Trevecca!

Compliments of

### NEELY, HARWELL & CO.

Wholesale Dry Goods and Notions

Phone 6-8978

### DR. J. M. TASSEY

Optometrist

49 Arcade (Upstairs)

Nashville, Tenn.

**SOUTHSIDE  
CHURCH OF THE NAZARENE**

Third and Ash  
NASHVILLE, TENNESSEE

M. E. REDFORD  
Pastor

J. C. BIGGS . . . . . S. S. Supt.  
JULIUS CURTIS . . . . . N. Y. P. S. Pres.  
MRS. M. E. REDFORD . . . . . W. F. M. S. Pres.

WHERE YOU ARE ALWAYS  
WELCOME



Our Support Is for Trevecca

COMPLIMENTS  
OF  
**FIRST CHURCH OF  
THE NAZARENE**

123 Moreland Ave., S. E.

ATLANTA, GEORGIA

CHARLES H. STRICKLAND, Pastor



JOHN F. CHILTON . . . . . S. S. Supt.

HERBERT C. HARVEY . . . . . N. Y. P. S. Pres.

MRS. J. B. BEAVERS . . . . . W. F. M. S. Pres.

**FIRST CHURCH  
OF THE NAZARENE**

NEWPORT, KENTUCKY

R. L. IHRIG, Pastor

225 Newman Ave. . . . . Ft. Thomas, Ky.

**YOUNG  
PEOPLE'S SOCIETY**

FIRST CHURCH OF THE  
NAZARENE

22nd and Bath Avenues  
ASHLAND, KY.

GENE E. PHILLIPS, Pastor  
M. CRAY, Asst. Pastor

Broadcast From Church Over

WCMI

Sunday . . . . . 11-12 A.M.

Wednesday . . . . . 8-8:30 P.M.

"Onward for Trevecca"

COMPLIMENTS  
OF  
**CLENDENIN  
CHURCH OF THE NAZARENE**

Cleundenin, W. Va.

REV. L. D. SMITH, Pastor



**Crown Tent  
and Awning Co.**

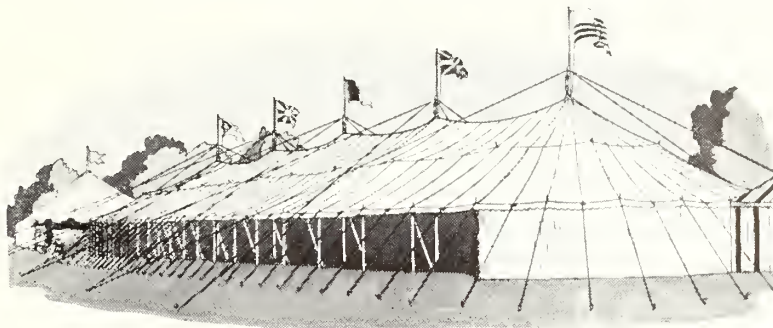
936 Third Avenue, North  
Nashville, Tenn.

**GOSPEL TENTS**

For Sale or Rent

**FOLDING CHAIRS**

For Rent



**BUDDE & WEIS MANUFACTURING CO.**

JACKSON, TENNESSEE

Highest grade pews and pulpit furniture at reasonable prices for over 35 years. Write  
for catalogue.

**INGLEWOOD  
CHURCH OF THE NAZARENE**

Gallatin Road and Sunnymead Drive

Sunday School . . . . . 9:30 A.M.  
Divine Worship . . . . . 10:45 A.M.  
N. Y. P. S. . . . . 6:45 P.M.  
Evangelistic . . . . . 7:30 P.M.  
Prayer and Praise, Wednesday . . . . 7:30 P.M.

**EVERYBODY WELCOME**

REV. R. J. SMELTZER, Pastor

Trevecca We Greet You  
**FIRST CHURCH OF THE  
NAZARENE**

Johnson City, Tennessee  
REV. and MRS. J. C. MATHEWS, Pastor

Compliments of  
**Radebaugh Lane, Optometrists**

58 Arcade

**ARGILLITE  
CHURCH OF THE NAZARENE**

Is Supporting Trevecca  
MISS DOROTHY MADDY, Pastor

**STROBEL'S MUSIC SHOP**

Everything in Music—Musical Instruments  
29 Arcade Nashville, Tennessee

Compliments of  
**DALE'S CHAPEL  
CHURCH OF THE NAZARENE**

GERALD W. EVEREST, Pastor

Hymns of All Churches Each Friday Night, 7:30  
Station WSIX

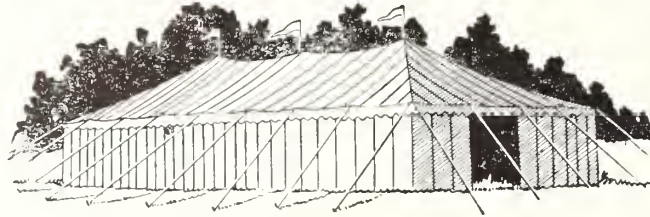
**DEAN'S**

SEWELL SUITS—GENT'S FURNISHINGS  
J. H. CASHION, Mgr. Phone 6-9369  
217 4th Ave., N. Nashville

GOSPEL  
TENTS

Sale or  
Rent

Folding Chairs  
For Rent



Expert  
Workmanship  
First Quality  
Fabrics  
Satisfaction  
Guaranteed  
50 Years  
Experience

## NASHVILLE TENT & AWNING CO.

6-2578—6-6323

309-11 1st Ave., No.

Nashville, Tennessee

## BEASLEY AND SONS COMPANY

SASH, DOORS, PAINTS, GLASS

KIMSUL INSULATION

147 3rd Ave., N.

Nashville, Tenn.

▼

## M. E. DERRYBERRY COMPANY

And

## SPOT CASH COMPANY

Wholesale Grocers

NASHVILLE, TENNESSEE

▲

## TOM, DICK, AND HARRY GROCERY

FRESH MEATS AND  
VEGETABLES

A. F. HEMMERLY, Manager

See WHITE and You'll See RIGHT

## DR. J. H. WHITE DR. CALLIE MAE WHITE

501 Hitchcock Building

Over Liggett's Drug Store

Telephone 6-5970



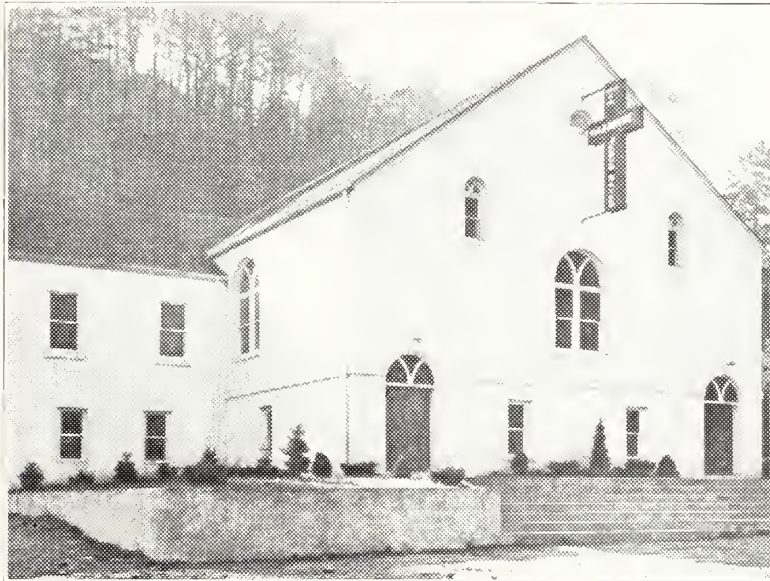
DAVIS  
CREEK



THE WALLING FAMILY

CHURCH  
OF THE

## NAZARENE



REV. FLORENCE WALLING	Pastor
R. G. MEANS	S. S. Superintendent
ARNOLD ODELL	President N. Y. P. S.
MRS. ISABELLE BICULEY	President W. F. M. S.

THE CHURCH WITH THE TRUE TREVECCA SPIRIT

## ONE VISIT—CONVINCES

"This is the school for me," is the frequent comment of alert young people who visit our school. Come yourself; see and compare the spirited tempo of our training, our equipment, and the completeness of our school and courses.

"Appealing to Those Who  
Want the Best"

## NASHVILLE BUSINESS COLLEGE

Y.M.C.A. Building, 6-5637, Nashville, Tenn.

COMPLIMENTS

OF

## RED ACE PETROLEUM COMPANY

NASHVILLE, TENNESSEE

**Union**  
*Cream of Quality*  
**ICE CREAM**



## WOODBINE

CHURCH OF THE NAZARENE

JESSE A. MIDDENDORF, Pastor



"A Church With a Heart Interest"

## SPRINGFIELD

CHURCH OF THE NAZARENE

V. NEIL RICHARDSON, Pastor

"We are Boosting Trevecca"

## MURFREESBORO

CHURCH OF THE NAZARENE

KOY W. PHILLIPS, Pastor

"The Church With a Trevecca Spirit"

## BLAKEMORE

CHURCH OF THE NAZARENE

JOHN R. BROWNING, Pastor

"We are Supporting Trevecca"

## PINE HILL

CHURCH OF THE NAZARENE

B. S. DOWNING, Pastor

The Little Church With the Big Welcome

## HERMITAGE HER-VITA FEEDS

Made in Nashville

Sold by Best Dealers Everywhere

3-1983

Phone

5-5061

## Compliments of the CHURCH OF THE NAZARENE

DOYLE, TENNESSEE

REV. A. F. HADDEN, Pastor



# PHILLIPS & BUTTORFF MANUFACTURING CO.

•  
Everything for Dining  
Room, Kitchen and  
Nursery

•  
ENTERPRISE  
STOVES, FURNACES AND  
STOKERS

•  
Established 1858  
217-23 3rd Ave., N. Nashville, Tenn.

# ALLOWAY BROTHERS CO.

•  
PROVISIONERS

•  
TABLE TEST

POULTRY-EGGS-MEAT

# COMPLIMENTS OF PEACH'S LUNCH ROOM

▼  
A Clean, Comfortable Place  
to Eat

Your Choice of Well-Cooked  
Foods

▼  
Phone 6-9485  
405 Broadway Nashville, Tenn.

AT YOUR GROCER'S  
DON'T SAY BREAD

SAY . . .

*Holsum!!!*

# NASHVILLE CHINA AND EQUIPMENT CO.

Hotel, Restaurant Supply  
and Equipment

219 4th Ave., S. Nashville, Tenn.

# T R E V E C C A NAZARENE COLLEGE

LOCATED IN THE ATHENS OF THE SOUTH

The fastest growing school in the Church of the Nazarene with a safe and sound basis and a firm financial foundation.

## OUR AIM

To Be Deeply Spiritual and Build Christian Characters

Trevecca is the first line of defense in the Church of the Nazarene in the Southeastern Educational Zone

Every member of the Faculty and Board of Trustees an earnest Christian.



COLLEGE, A.B.  
SCHOOL OF RELIGION, TH.B.  
FINE ARTS  
HIGH SCHOOL



Write for Catalog Today      A. B. MACKEY, President

"The Sun Never Sets on Trevecca Students"



## ALABAMA CLUB

JEANETTE TAYLOR . . . . . President  
NAOMI NABORS . . . . . Vice-President  
BEATRICE BRAKEFIELD . . . . . Secy.-Treas

"We are All T. N. C. Boosters"

## KENTUCKY CLUB

MATTIE GINTER . . . . . President  
GLENN STOVALL . . . . . Vice-President  
VIRGINIA HOWARD . . . . . Secretary  
PAULINE HOWARD . . . . . Treasurer

"Friendly—Willing—Loyal"

## TENNESSEE CLUB

MRS. A. B. MACKEY . . . . . Sponsor  
J. B. ROSE . . . . . President  
RUBY LEE NEELY . . . . . Vice-President  
ANNA LOYD SAXON . . . . . Secretary  
FREDA NESBITT . . . . . Treasurer

"Tennesseans Prove Their Love for Trevecca by  
Their Service"

## FLORIDA CLUB

PROF. D. A. YARBROUGH . . . . . Sponsor  
SAMUEL P. VANN . . . . . President  
HOMER J. ADAMS . . . . . Vice-President  
RUTH JOHNSON . . . . . Secretary  
CLYDE OWENSBY . . . . . Treasurer

"The State of Sunshine and Flowers"

## GEORGIA CLUB

GLENN CASS . . . . . President  
LEILA DELL MILLER . . . . . Vice-President  
HELEN HAYNES . . . . . Secretary  
ROBERT BUSH . . . . . Treasurer

"Way Down South in Dixie"

## W. VIRGINIA CLUB

ROBERTA SAMPLES . . . . . President  
JACK WALLING . . . . . Vice-President  
JIMMIE THOMAS . . . . . Treasurer  
EDITH PAUGH . . . . . Secretary

"The Mountain State"

## MISSISSIPPI CLUB

PROF. L. P. GRESHAM . . . . . Sponsor  
MADELINE McCASKELL . . . . . President  
RAYMOND PARKER . . . . . Vice-President  
MONTINE MAYHAM . . . . . Secretary  
BERNICE BRADLEY . . . . . Treasurer

"The Land of Cotton and Magnolias"

## RAMBLER'S CLUB

BOB DAVISSON . . . . . President  
WILMA MOORE . . . . . Vice-President  
BETTY RIGGSBEE . . . . . Secy.-Treas.

"We are Divided in States but are United to  
Support Trevecca."

## WITH COMPLIMENTS OF

### MRS. SADIE AGNEW JOHNSON

Teaching her twenty-third year in Trevecca

### R. D. GRUBBS

Dayton, Kentucky  
Nazarene lawyer and T. N. C. supporter

### B. W. MURPHY

Paris, Tennessee  
First church in Tennessee District to install  
fluorescent lighting

### G. PRATT

Nashville, Tennessee  
Sunday School Supt., Woodbine Church

### CARL CORDELL PRATT

Nashville, Tennessee  
N. Y. P. S. Pres., Woodbine Church

### JOHN T. BENSON

Nashville, Tennessee  
President, John T. Benson Publishing Co.

### REV. JOE E. COOK

Pastor, fastest-growing church in Old Hickory,  
Tennessee

### HOWARD W. SWEETEN

Ashley, Illinois  
National Evangelist and Loyal Trevecca  
Supporter

### P. P. BELEW

Atlanta, Georgia  
District Supt., Ga. District and member of  
Board of Trustees, Trevecca

### JOSEPH PITTS

Lexington, Kentucky  
Pastor and Trevecca Booster

## SCHOOL CALENDAR

- |   |  |
|---|--|
| Sept. 16—Registration for Fall Quarter          | Dec. 18-30—Christmas Holidays                    |
| Sept. 16-19—Services with Uncle Bud<br>Robinson | Feb. 3—Trevecca Motorcade                        |
| Sept. 26—General Social                         | Feb. 4—Board of Trustees Meeting                 |
| Oct. 3—Freshman Day                             | Mar. 26—Registration Spring Quarter              |
| Oct. 21-22—Ky. Karavan                          | May 14—Voice Recital given by Bernice<br>Bradley |
| Nov. 13—Founder's Day                           | May 26-27—Final Examinations                     |
| Nov. 27-28—Thanksgiving Recess                  | May 24-29—Commencement Week                      |
| Dec. 4-5—Final Examinations                     | May 24—Baccalaureate Sermon                      |
| Dec. 5—Registration for Winter Quar-<br>ter     | May 29—Graduation Exercises                      |



**World's Largest Publishers**

THIS BOOK DESIGNED AND PRINTED BY

*Benson*

PRINTING COMPANY ☆ NASHVILLE

**of College Annuals**

*Autographs*

---













