

Special

LD

5356

.T75

1930

c. 2

THE
DARDA

1930

Lyndell Cornwall

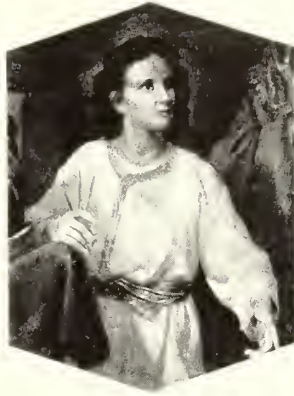
1924 - 1932



By F. H. M.

Ruby Shaw
Editor-in-Chief

L. D. Shelton
Business Manager



*"And it came to pass after three days they found
him in the temple—in the midst of doctors, both
hearing them and asking them questions, and
all were astonished at his understanding
and answers."*

THE DARDA

• • • VOLUME VI • • •

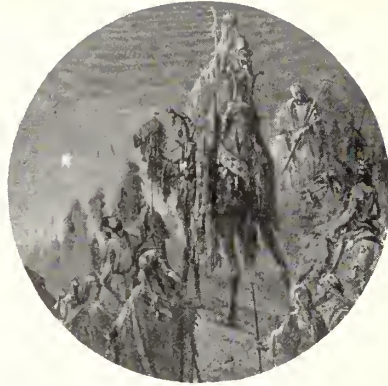
NINETEEN HUNDRED THIRTY

— PUBLISHED BY —
STUDENTS OF

TREVECCA COLLEGE

NASHVILLE, TENNESSEE

MACKAY LIBRARY
TREVECCA NAZARENE COLLEGE



"Behold there came wise men . . . to Jerusalem saying: Where is He that is born King of the Jews, for we have seen His star in the east . . . and when . . . Herod . . . demanded . . . where Christ should be born . . . They said unto him: In Bethlehem of Judea: for thus it is written . . ."

FOREWORD

To present within this book a theme that is local in color and symbolical of the spirit of the students of Trevecca college: to build a memorial not for the present but for the future—one that will keep bright and clear each sweet and tender memory of our college life, has been the aim of
The 1930 Darda.



*"And it came to pass . . . that God . . .
said unto him, Abraham: . . . take now thy
son and offer him, and Abraham bound Isaac
and laid him on the altar . . . and took the
knife to slay his son."*

DEDICATION

It is with thankful hearts that we, the Darda Staff of 1930, dedicate this sixth volume of the Darda to our Parents. In doing this we feel that too much cannot be said or done to show our appreciation to these loved ones who have sacrificed willingly to help us through life thus far and to ever keep before us a high standard of Christian ideals.

CONTENTS

Book I

THE COLLEGE

Book II

THE CLASSES

Book III

SCHOOL OF RELIGION

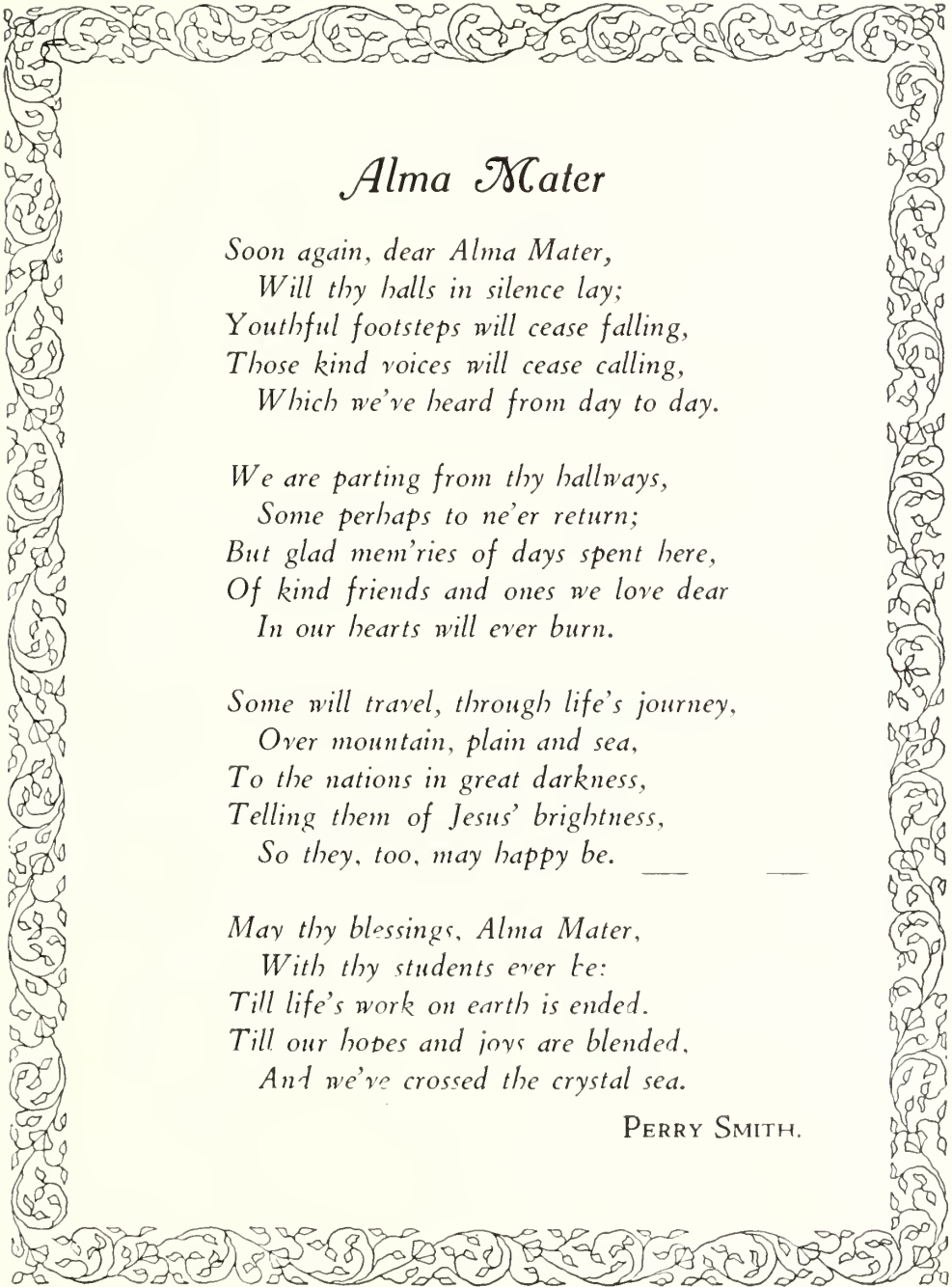
Book IV

ORGANIZATIONS AND
ACTIVITIES



*"Wisdom is better than strength. . . . The words of
wise men are heard quite more than the cry o' him
that ruleth among fools. Wisdom is better than weap-
ons . . . Wisdom is profitable to direct."*

Book I
THE COLLEGE



Alma Mater

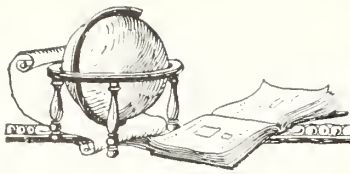
*Soon again, dear Alma Mater,
Will thy halls in silence lay;
Youthful footsteps will cease falling,
Those kind voices will cease calling,
Which we've heard from day to day.*

*We are parting from thy hallways,
Some perhaps to ne'er return;
But glad mem'ries of days spent here,
Of kind friends and ones we love dear
In our hearts will ever burn.*

*Some will travel, through life's journey,
Over mountain, plain and sea,
To the nations in great darkness,
Telling them of Jesus' brightness,
So they, too, may happy be.*

*May thy blessings, Alma Mater,
With thy students ever be:
Till life's work on earth is ended.
Till our hopes and joys are blended,
And we've crossed the crystal sea.*

PERRY SMITH.



DR. C. E. HARDY, B.S., M.D.
PRESIDENT





President's Message



It is said that when Livingston's anxious friends found him in the heart of Africa they insisted that he return with them. His remark was "Anywhere just so it is forward."

In looking over this 1929-'30 DARDA I am convinced it, too, is keeping up with all other things at Trevecca College—going forward. This school year is in considerable advance to that of the previous years. Evidently the DARDA staff has caught the inspiration and has taken a step forward. This edition is quite an improvement over that of last year.

By your labor and zeal you have demonstrated that you are directly interested in this beautifully bound book, but remember that this book is not made up of paper and ink alone. That which makes up the DARDA are the sayings, happenings, and activities of the faculty and student body. The every-day events are recorded in here. How this should remind us that our daily acts are being recorded in another great volume and what a pleasure it will be when, if we have lived noble lives, we hear our records read from the beautiful volume of the "Book of Life."

This issue should not be the closing history of this student body's strenuous efforts to obtain knowledge and build real Christian personality. Let it be the history of the beginning so when coming generations read these pages it will inspire them to greater and nobler things of life that they will be ready to follow on after your example because they find you are continually saying to pleading voices of friends and clarion notes of prosperity and pleasure "anywhere just so it is forward."

C. E. HARDY, *President.*





Faculty



R. J. KELLY, B.S., M.A.
Vice-President, Financial Director

A. B. MACKEY, A.B., M.A.
Dean of College, French, English

CLARENCE SHUTE, A.B., B.O., M.A.
Psychology, Education, Public Speaking

MISS SADIE AGNEW, A.B., M.A.
Mathematics, Church History

H. G. STUNECK, A.B.
History

MRS. MAUDE ALLEN STUNECK,
A.B., A.M., PH.D.
Modern Languages, Philosophy of Religion

MRS. MINNIE J. ELLINWOOD,
A.B., M.A., PH.D.
Greek, Latin, Theology

MRS. C. H. HURD, B.A., M.A.
Chemistry, Biology

MISS ADA B. CARROLL, B.MUS.
Voice, Expression

MISS JOHNNIE JERNIGAN
Piano, Violin, Musical Science

H. H. WISE
Bible

MISS FLORENCE NELSON, A.B.
Spanish





Faculty

FRED FLOYD, A.B., S.E.
Principal High School, History, Economics

MRS. HAZEL MITCHUM ROSS, B.L.
Latin, Science, Home Economics

E. D. CORNISH, A.B., B.S.
Mathematics, Dean of Men

MATTIE AURELIA CROWE, A.B.
French

MRS. E. D. CORNISH, A.B.
English

J. D. THRASHER
Principal Grammar School

MRS. ANNE G. JONES
Primary Department

MOTHER MARTHA ODELL
Dean of Women

MRS. SUSAN H. PENN
School Nurse

EULA LOVELACE
Assistant Nurse

MRS. COMPTON
Wind Instruments

MR. MACK CALDWELL
(Picture Missing)
Grammar Department

LILLIE SUE REDFORD
(Picture missing)
Assistant Librarian





Board of Trustees

OFFICERS

H. H. WISE, *President*
Nashville, Tenn.

C. E. HARDY, *Vice-President*
Nashville, Tenn.

G. W. FULCHER, *Secretary*
Gallatin Road at Petway
Nashville, Tenn.

TIM H. MOORE, *Treasurer*
403½ Union Street
Nashville, Tenn.

MEMBERS

- L. T. WELLS Box 132, Science Hill, Ky.
- W. M. TIDWELL . . . Sixteenth and Williams Sts., Chattanooga, Tenn.
- J. E. GAAR Trevecca College, Nashville, Tenn.
- J. A. MCDANIEL Hartselle, Ala.
- M. E. REDFORD Trevecca College, Nashville, Tenn.
- C. M. HARRISON 1724 Spring Garden St., Greensboro, N. C.
- R. H. M. WATSON College Heights, Meridian, Miss.
- OSCAR HUDSON 125 Moreland Ave., S. E. Atlanta, Ga.
- HOWARD ECKEL 535 N. W. Eighth Ave., Miami, Fla.
- J. L. ROBY 421 N. W. Fiftieth St., Miami, Fla.
- O. L. MAISH 1811 Cleveland Ave., Charlotte, N. C.
- L. S. HUFF 1000 Thirty-first St., Columbus, Ga.
- F. P. KERST 914 S. Twenty-eighth St., Louisville, Ky.





ENTRANCE TO THE COLLEGE



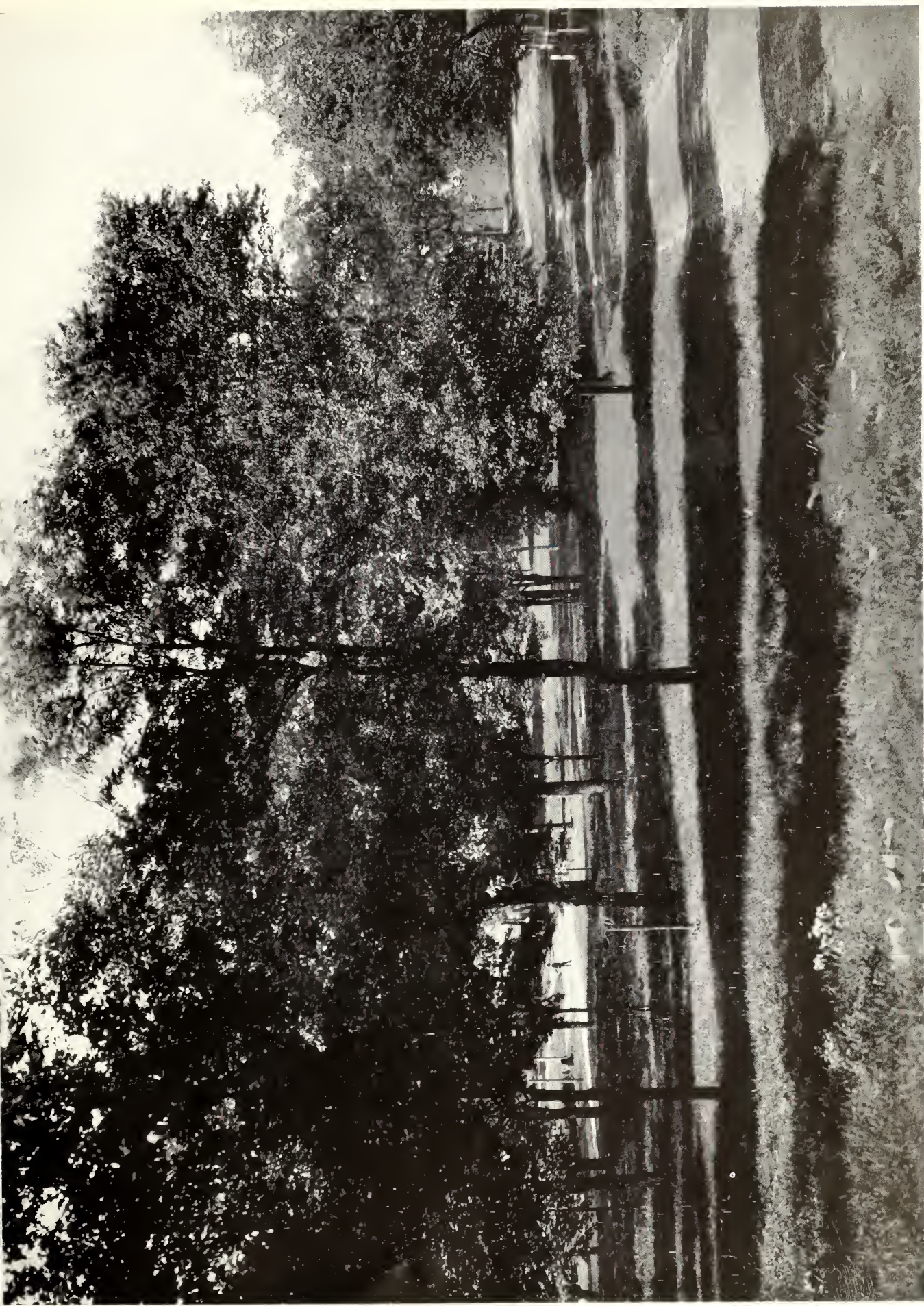
CAMPUS BEAUTY



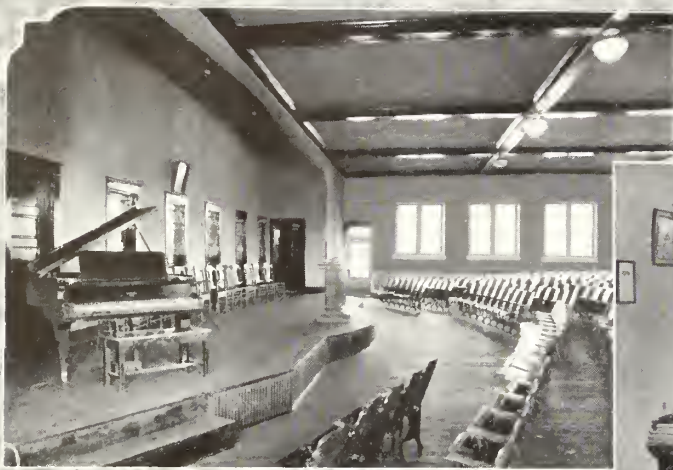
ADMINISTRATION BUILDING AND GIRLS' DORMITORY



COLLEGE BUILDING



THE DRIVEWAY

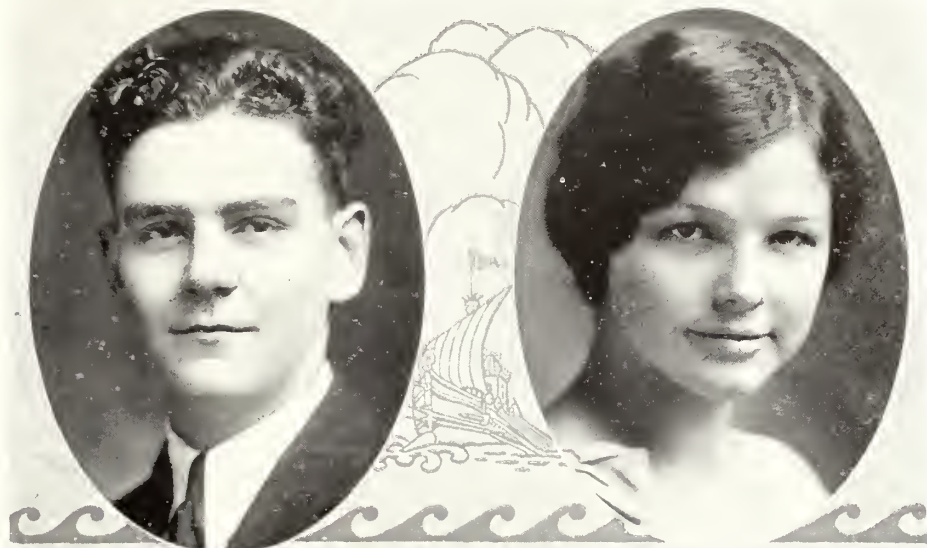
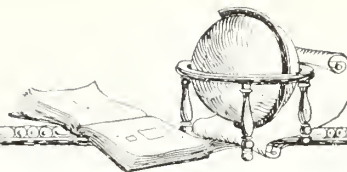


INTERIOR VIEWS—CHAPEL, STUDENTS' ROOM, LABORATORY, LIBRARY, DINING HALL



"And when he was come into his own country, he taught them in their synagogues, insomuch that they were astonished."

Book II
THE CLASSES



College Seniors

ELLIS BURNS Cullman, Alabama

Senior Class President, 1929-'30; Varsity Basketball; Athletic Association; Alabama Club; Parthenian Literary Society.

Ellis came to us as a freshman with all those qualities that mark a freshman. Now he has risen to that honorable position of Senior Class President. That, within itself, tells what Ellis is. Other than his college work, Ellis takes great interest in the social side of life, especially the feminine sex. After all, Ellis is a friend in time of need and every inch a gentleman.

RUBYEE LEE SHAW McComb, Mississippi

Vice-President Senior Class, 1929-'30; Editor-in-Chief "Darda", 1929-'30; Parthenian Literary Society; Christian Workers' Association.

Rubyee Lee needs no introduction because she has made an unusually fine collegian editor. She has proven her unusual ability both as an executive and as a scholar. This plus her winsome smiles and pleasing personality have won for her the love and admiration of every student as well as every member of the faculty. We all wonder in what direction her life's work will take her.





College Seniors

ARABELLA MAE BALLA Ashtubula, Ohio

Secretary of Senior Class; Parthenian Literary Society; Christian Workers' Association; Student Volunteers' Association; Missionary Society.

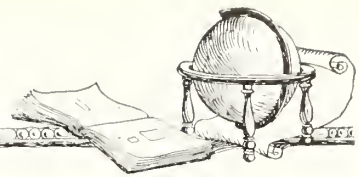
Many thanks to the state of Ohio for sending us such a wonderful girl as Arabella. With a definite purpose in life, she has set herself to the task of preparation. No student has been more diligent or faithful. Her bright smiles, brown eyes and dark hair speak for themselves of charm and attractiveness. We love her.

ETHEL BURNER Frank, West Virginia

Christian Workers' Association; Parthenian Literary Society.

Ethel is of such a type that she becomes a pleasant change from the modern type of her sex. Although an attitude of reserve veils her from most of us, those who have passed that veil have found a charming and hospitable nature. Ethel seeks achievements of true worth.





College Seniors

EMMA LEE BROWN Jasper, Alabama

Athletic Association; Alabama Club; Parthenian Literary Society; Fords; Librarian of Girls' Glee Club.

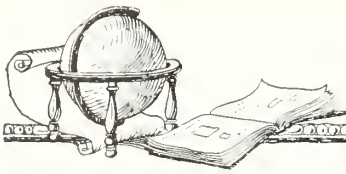
A ray of sunshine on a rainy day. She is witty, mirthful and altogether entertaining. She possesses the biggest and happiest heart of any girl in school, a heart ever ready to sympathize with all your joys and sorrows. We hate to see her leave, but our best wishes and love will go with her always.

SUSIE ALLEN Huntsville, Alabama

Parthenian Literary Society; "Darda" Staff; School of Religion.

"Still water runs deep," we often hear. Well that is Susie's type—quiet, reserved, not talking to hear herself talk, but when she does speak it is well to listen and to heed thereto. She is a deep thinker, kind, capable, a lover of beauty and possesses unusual ability as a writer. We wish her all kinds of success in her future work.





College Seniors

LAWERNCE BROWN Jasper, Alabama

Athletic Association; Varsity Basketball.

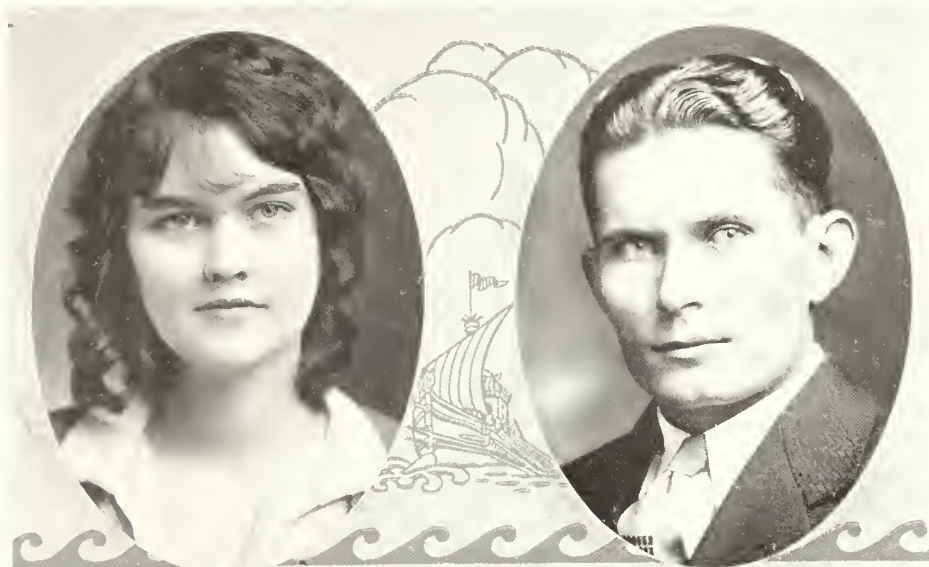
Lawernce will be remembered as one who persevered until he accomplished what he desired to do. An innate optimism lends to Lawernce an air of being at peace with the world which makes him admired by those who know him. Alabama should be proud of this boy who knows no discouragement nor defeat.

LORINNE BUNTING Jacksonville, Florida

Parthenian Literary Society; Christian Workers' Association; Secretary of Georgia Club; Secretary of Girls' Glee Club.

Lorinne is one girl who gives us a good first impression and a better second one. She is an attractive girl who will make good at most anything she tries. Some day when Lorinne has become "Professor of Rhetoric" at Vanderbilt we hope that she won't forget the little T. C. Seniors she knew in 1930.





College Seniors

IMOGENE THRASHER Albany, Kentucky

Girls' Glee Club; Parthenian Literary Society.

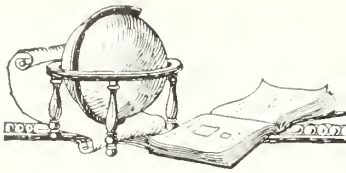
Possibly no traits of human character are more universally admired than simply love and kindness, and yet these are not the only virtues Imogene possesses. Her talents are many and she has excellent possibilities. She is happy and carefree by nature and a jolly good sport; moreover she's very attractive. Trevecca will surely be the poorer for her loss after she graduates, but the wide, wide world will be the richer.

EARL VENNUM Miami, Florida

"Big Four"; Secretary Christian Workers' Association; Parthenian Literary Society; Academy Freshman Sponsor.

Who is this man? By what mistake of nature has he strayed among ordinary people? He has proven his ability as an executive by successfully filling the position of assistant dean of men. All the boys just love Earl—and girls, too. He also possesses unusual ability as a speaker and scholar. His good talks are an inspiration to all lovers of the Christian cause.





College Seniors

ALMA W. COMPTON Nashville, Tennessee

Faculty; Orchestra.

We are glad to have Mrs. Compton in our class, for she is one who never shirks her known duty. She has an unassuming manner, back of which is talent and training. If a band director is needed Mrs. Compton is the one we would call for. But from the height of this accomplishment she humbly pursues her task as a student.

MAGGIE LOU ENGLISH Barney, Georgia

Girls' Glee Club; Girls' Quartette; Parthenian Literary Society.

Maggie Lou is one of those few girls who entered the class in '26 when we were Juniors in high school. She has stayed with us through all the struggles with term papers and occasions great and small in the history of the class. She is a jolly, good-natured sort of person and we see nothing less than a bright future in store for her.





College Seniors

RUTH LILLIAN CORNWELL Gainesboro, Tennessee

Parthenian Literary Society; Athletic Association; Chevrolet; Girls' Glee Club.

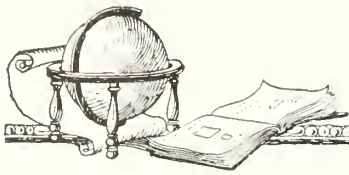
A sweet disposition may be said to be the chief characteristic of Ruth. She never seems to get vexed and tired of living, and she always has a merry smile ready to greet you wherever she meets you. During her eight years at Trevecca, Ruth has smiled miles and miles of smiles and has made just that many friends.

CRANFORD BURNS Cullman, Alabama

Parthenian Literary Society; Alabama Club; Athletic Association; College Basketball Team; Assistant Editor of "Darda" of 1930.

Cranford is a genial good friend, a gentleman through and through. It is not often that one finds a man like him. He entered with the class in '28 and has been a good worker for the class, playing on our college basketball team and always playing the game fair and hard. If you play the game of life with the same spirit, old boy, we are sure you will come out on top with a grin.





College Seniors

ERMA DUVAL Canfield, Ohio

Christian Workers' Association; Parthenian Literary Society; Fords; Girls' Glee Club.

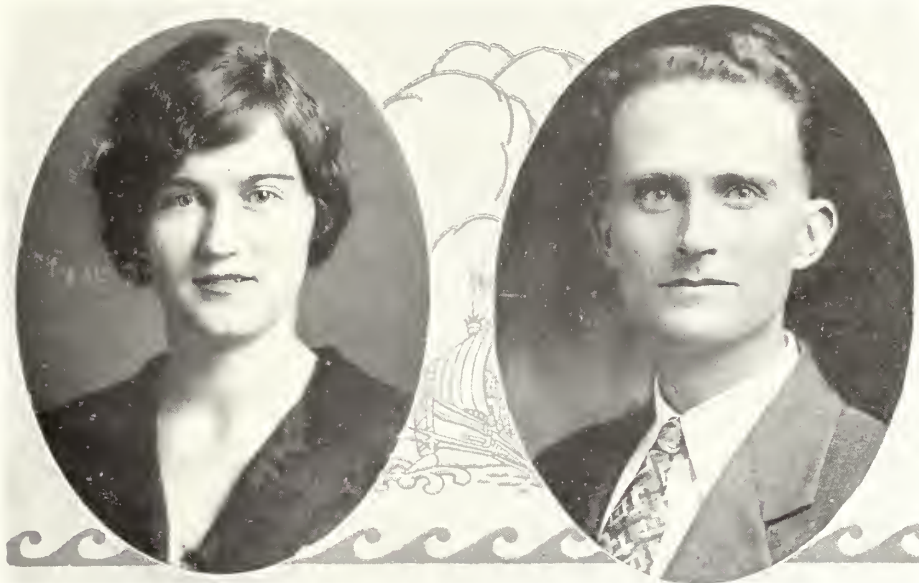
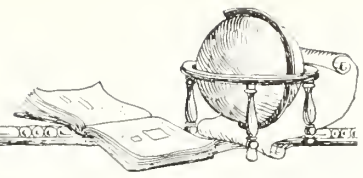
A conscientious worker, a far-sighted thinker, Erma is one of our finest girls. Everything she does is of her best, whether it is doing class work or just being a good friend. She is the kind of girl who stands up for what is fine and good in everything. She has been true to her college, true to her class, and true to the best ideals. She will do her best in everything.

ETHEL GLANCY Highland, Michigan

Parthenian Literary Society; Chevrolets.

Ethel is so quiet that perhaps we would never know she was busy if her achievements did not speak so well of her. A's in history and biology are not so easy to get and she has got A's in both. Besides this, Ethel is a bundle of sweetness and charm, possessing a sunny smile and a most agreeable disposition. A veritable God-send, no matter what the situation is, "when a fellow needs a friend."





College Seniors

PERRY ELIZABETH SMITH Alexander City, Alabama

Parthenian Literary Society; Girls' Glee Club; Vice-President Alabama Club.

Perry is sincere, earnest and quiet. She has proven that she is capable and persevering by having the courage to fling to the winds those difficulties facing her and by working hard in order to finish her school work here. High ideals and practical common sense are linked together in Perry and wherein could she fail? Success and happiness will be hers in whatever she chooses to do because Perry's the kind who can make bright the dark corners of life.

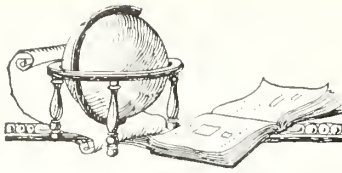
DURELL SHELTON Milford, Alabama

Business Manager of 1930 "Darda"; Christian Workers' Association; Parthenian Literary Society; Mixed Quartette; Boys' Glee Club.

*"A merry heart, a jolly laugh;
A good true friend, and that's not half."*

Durell is a good student, having that steady quality of honesty. If a man is an honest student, he cannot fail in life. Durell's life has been an inspiration to many young people to be true to Christ above everything else. His singing has gone deep and awakened in hearts the desire to be all that Christ would have them be.





College Seniors

CURTIS H. PEARSON Chattanooga, Tennessee

Christian Workers' Association; Parthenian Literary Society; School of Religion.

*"We doubt not that for one so true
There must be a noble work to do."*

Curtis is a boy who has heard the call of God and in spite of all opposing forces is training himself to fulfill the mission to which he has been called. He will be remembered as one who persevered until he accomplished what he desired to do.

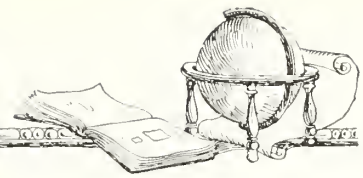
LAURA E. BROWN Highway, Kentucky

Parthenian Literary Society.

"Not too sober, not too gay, but a good, true girl in every way."

Although she has not been with us all the year, Laura has come to fit in nicely as one of our classmates. She is true blue and seeks achievement of true worth. She is one who is ever striving upward toward higher things—one always true to herself and to others.





College Seniors

LILLIAN FLOYD Elza, Georgia

Parthenian Literary Society; Fords; Sponsor of Academy Sophomores.

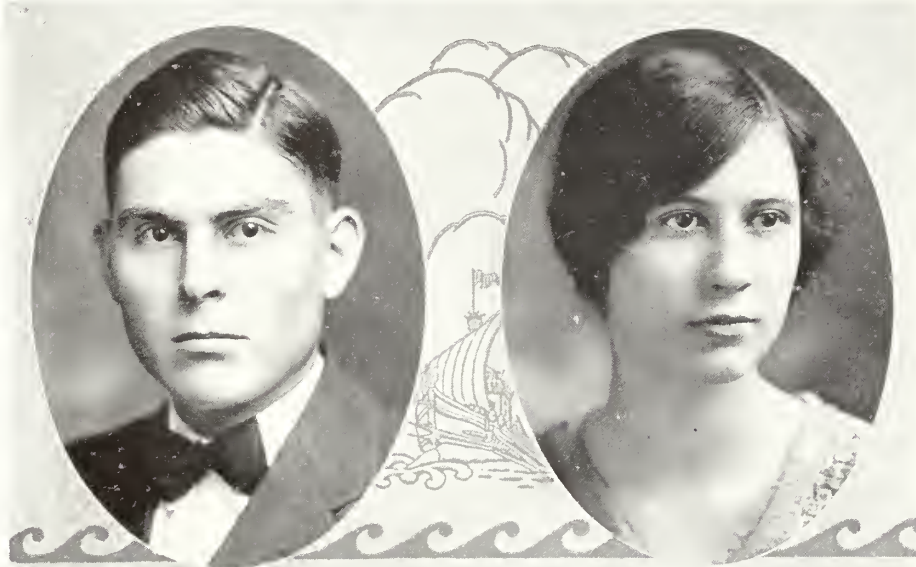
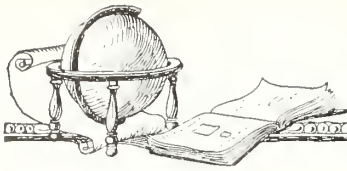
Mrs. Floyd is of gentle speech. Eternity alone can tell the good and the joy her words have brought just when they were needed most. Courage and endurance have characterized this life. She has allowed no obstacle to keep her from finishing at Trevecca. Furthermore she makes for Professor Floyd a good wife.

MARTHA VERA FELKAR Lawrenceburg, Tennessee

Parthenian Literary Society; Fords; Christian Workers' Association; Girls' Glee Club.

What can we do better than to live truly? This we are convinced Vera does—true to her class, to her college, and to her God. She always does her best in everything. She is pleasant to all, but to those of the inner circle of friends, she is gracious.





College Seniors

OTIS LEE Shivers, Mississippi

Christian Workers' Association; School of Religion; Parthenian Literary Society.

Dry humor and deep sincerity are the words that describe Lee. He has been with us during our college days, and during this time he has been an ideal classmate. He is a boy that has risen, not because he was driven or by accident, but by his own initiative and his desire to serve God and his fellowman.

SUE BESS JONES Irwinton, Georgia

Secretary Parthenian Literary Society; Athletic Association; Christian Workers' Association; Girls' Glee Club; Georgia Club.

Originality and pep stand out in glaring headlines in the character of Sue Bess. But the most striking thing about her is that everybody likes her. She is practical in thought, straightforward in purpose, ever faithful to her books, even more so to her friends. She is a girl of upright character, ready for fun or ready for work, ever loyal to ole T. C.

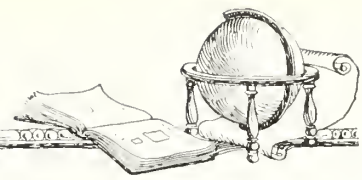
CLYDE AKINS Nashville, Tennessee

(Picture missing)

Missionary Society; Christian Workers' Association; Student Volunteer.

If sincere and earnest effort count for much, Clyde will attain. She signifies all that is conscientious, loyal and true. She is characteristically a friend to all, ready to help in whatever way she can. She has high ideals and works for their attainment.





Junior Class Officers

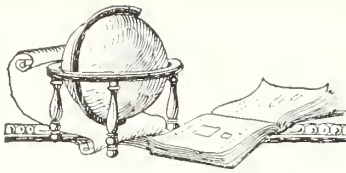
ARNOLD KIEHN, *Class President*
Pasadena, California

AMOS SMITH, *Vice-President*
Nashville, Tennessee

MAYLENE NABORS, *Secretary of Class*
McComb, Mississippi

FRANK LEGGETT, *Treasurer of Class*
Meridian, Mississippi





Junior Class

JEWEL NICHOLSON
SALEM, INDIANA

REECE METZGER
OLNEY, ILLINOIS

RUBY PARRISH
(Picture missing)
THOMASVILLE, GEORGIA

VIRGINIA SAUL
ROANOKE, VIRGINIA

BYRON PENNINGTON
OLD HICKORY, TENNESSEE

BERT RICHARDSON
JASPER, ALABAMA

GERTRUDE THETFORD
UNION CHURCH, MISSISSIPPI





Junior Class

JOHN MIMS
PARIS, TENNESSEE

LINA PARSONS
NEW MARTINVILLE, WEST VIRGINIA

WILBUR HUDSON
JASPER, ALABAMA

ALMA YARBOUGH
(Picture missing)
THOMASVILLE, GEORGIA

KELLEY D. THETFORD
UNION CHURCH, MISSISSIPPI

RUBY LEE DEES
BETHANY, OKLAHOMA

OPHA HARRIS
DOVER, TENNESSEE





Junior Class

MAMIE FOSKEY
NASHVILLE, TENNESSEE

ARCHEY CARNEY
NASHVILLE, TENNESSEE

MARY WRIGHT
CASS CITY, MICHIGAN

MACK CALDWELL
NASHVILLE, TENNESSEE

J. D. THRASHER
ALBANY, KENTUCKY

PAULINE ALEXANDER
HARTSVILLE, ALABAMA





Junior Class

LEWIS SHINGLER
DONALSONVILLE, GEORGIA

MARY KILGORE
NASHVILLE, TENNESSEE

LULA MAE SMITH
ALEXANDER CITY, ALABAMA

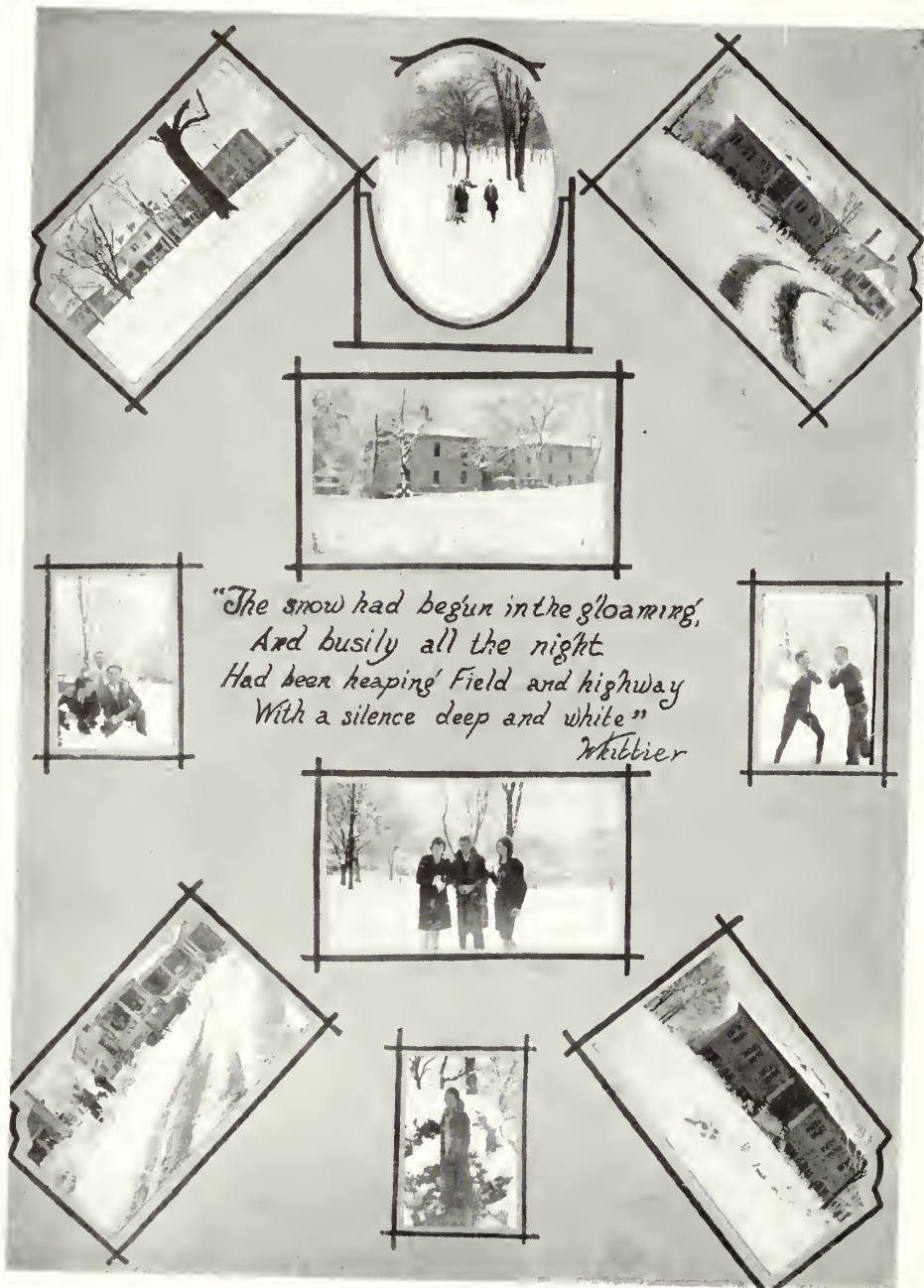
OLAF HESSON
(Picture Missing)
GORDONSVILLE, TENNESSEE

DR. E. FRANCIS BOYER

EMMA BEUGARD
GRANITE CITY, ILLINOIS

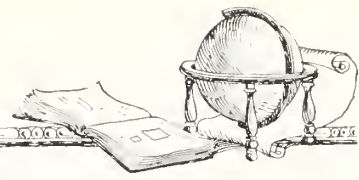
FRED GRAVES
NASHVILLE, TENNESSEE





SNAPS





Trevecca Academy

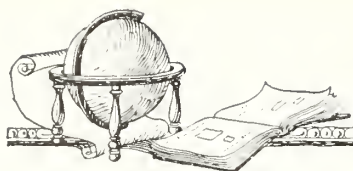
OUR president has said that if the college department or the high school and grades would have to be given up he would rather let the college go than the lower departments, for it is the early training that, to a great extent, determines what a boy or girl will be in later life. When we as high school students think of this truth it makes us appreciate more the advantages we enjoy in ole Trevecca High School. We feel deeply indebted to our teachers who have labored so patiently with us, imparting to us of their knowledge day after day, faithfully yet cautiously, lest our heads become too full and pop. We appreciate their untiring efforts and have tried to manifest our gratitude by opening the gates of our intellects to the folds of learning that they have turned our way.

Sometime in the dim future when the cares of life so beset us like a besieging army we will remember the merry school days of old and rise above the threatening cares to float on the wings of our imaginations back into the old school room and look, half smiling, at ourselves as we wrestle with stubborn algebra problems, as we try to get Wordsworth and Longfellow untwisted and put in their respective places, and as we fight anew the Civil War in history class.

*Now I am a freshman pert and green,
Stretching my neck at anything to be seen.
Now I am a sophomore lively and gay,
Studying hard every hour of the day.
Now I am a junior with lots to do,
Wondering when I will ever get through.
Now I am a senior with a dignified air,
No I'm not, here I sit in this chair,
And thus ends a pleasant dream.*

PAUL MILLIGAN.



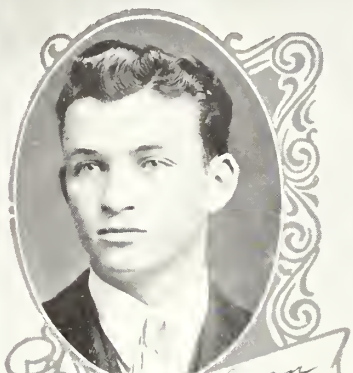


Academy Seniors

PERCY E. DEAN

President of Senior Class; President of Athenaeum Literary Society; President of Pro and Con Debating Club; Secretary of Boys' Glee Club.

"He's brilliant, clever, of a rare turn of mind. You'll have to look far for one of his kind."



Percy E. Dean

MARJORIE FITE

Vice-President of Senior Class; Athenaeum Literary Society; Ford.

"Her cheery disposition makes beauty attractive, knowledge delightful, and wit good humored."



Marjorie Fite

ESTELLE THETFORD

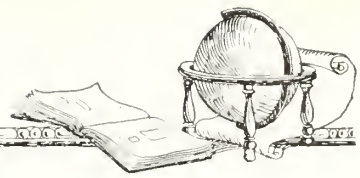
Secretary Senior Class; Athenaeum Literary Society; Girls' Glee Club; Debating Club; Girls' College Quartette; Ford.

"Steady, sincere, sweet—the three S's that make a friend like Estelle."



Estelle Thetford





Academy Seniors

THOMAS DEAN

Treasurer; President of Pro and Con Debating Club; President of Mnemosyne Literary Society; Boys' Glee Club; Ford.

"Give me the joy of living and some great work to do."

BELETA MEGGS

Mnemosyne Literary Society; Ford; Alabama Club.

"She was just the quiet kind whose nature never wavy."

WILLIE MAE REDFORD

Critic of Mnemosyne Literary Society; Secretary of Pro and Con Debating Club; Girls' Glee Club; Chevrolet.

"She is always beholding the bright countenance of truth in the quiet and still air of delightful studies."





Academy Seniors



KATHERINE COLLIER

Mnemosyne Literary Society; Ford; Athletic Association; Orchestra.

"And large brown eyes that flash on you a volley of rays that say a thousand things at once."

CLIFTON IRWIN

Basketball Captain of High School Team; Debating Club; Vice-President of Athenaeum Society; Glee Club; President of Rambler's Club.

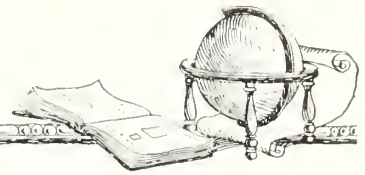
"Not too serious, not too gay, but always a jolly good fellow."

WILLIE DALE FLATT

Athenaeum Literary Society; Debating Club; DARDA Staff; Secretary Athletic Association; Ford.

*"Cheerful at morn she wakes from sweet repose,
Smiles and laughs, and carols as she goes."*





Academy Seniors

MORTIMER GARRETT

Corresponding Secretary Senior Class; Treasurer of Athenaeum Society; Georgia Club; Ford; Athletic Association; Girls' Glee Club.

"When life is bright Mortimer smiles, but when it's gloomy she laughs out loud."

MAZELLE COPELAND

Mnemosyne Literary Society; Ford; Athletic Association.

"Try being happy in the present moment, and put not off being so to a time to come."

HARRY SAUL

Debating Club; Athenaeum Literary Society; Athletic Association; Ford.

"True courtesy shows itself to the least as well as to the greatest."





Academy Seniors



CURTIS GALLOWAY

Athenaeum Literary Society; Athletic Association; Orchestra; Ford.

"My heart is whole, my fancy free; run along, little girls, don't bother me."

CATHARINE WALLING

Athenaeum Literary Society; Parliamentarian of Pro and Con Debating Club; Secretary School of Religion; Girls' Quartette; Fords; Athletic Association; Girls' Glee Club.

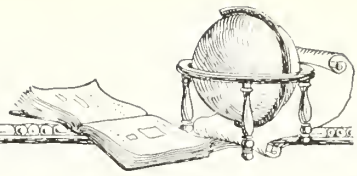
"I jolly, unselfish personality is the greatest gift of all."

MORRIS GENTRY

Mnemosyne Literary Society; Boys' Glee Club; Athletic Association; Ford.

"I fellow who seems of cheerful yesterdays, and confident tomorrows."





Academy Seniors

EZRA HENDLY

Athenaeum Literary Society; Pro and Con Debating Club; Boys' Glee Club; Athletic Association; Ford.

"Either praise me or expose me; I cannot stand to be overlooked."

ZELMA BABER

Mnemosyne Literary Society; Rambler's Club; Christian Workers; Ford.

"Life is what you make it."

VICTOR PARKER

Athenaeum Literary Society.

"If it be a gentleman and a friend you seek, you have found him."

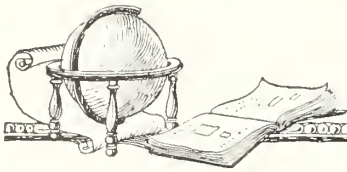
MRS. SUSAN PENN

(Picture Missing)

College Nurse; Mnemosyne Literary Society; Missionary to Africa.

*"Good actions crown themselves with everlasting days,
Who deserves well, needs not another's praise."*





Senior Class Poem

*Long years, my friends, we have striven
To reach this blissful goal.
We have come to be numbered with others,
We have come now to the threshold.*

*These years of much pleasure together
Have now come to a close.
They are written on pages of history,
They have found their evening repose.*

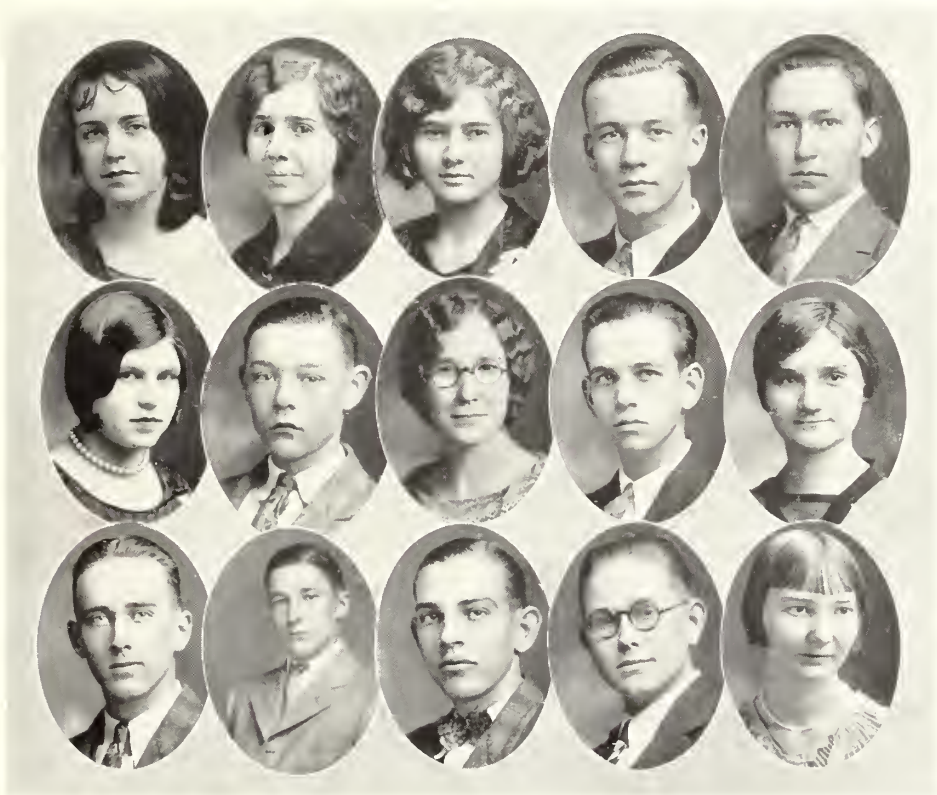
*Sweet memories each year bring to us
Of our classmates, teachers and bell,
But still in the mood of our sadness
Remember "He doeth all things well."*

*As we separate one from another
And go on life's journey so long,
May we praise our gracious Redeemer
Who lightens our burdens with song.*

*Praise God for the four years passed through;
Thank God for friends we have met;
May we live to meet in heaven
When life's evening sun is set.*

By BELETA MEGGS.





Academy Juniors

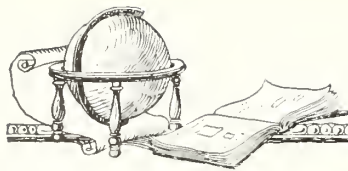
OFFICERS

- BILLYE ROGERS *President*
 IVAH RAMSEY *Vice-President*
 ANNE PEARL LENTZ *Secretary*
 JAMES MOORE *Treasurer*

MEMBERS

- | | |
|------------------|------------------|
| ROBERT YATES | OLIVE WORDSWORTH |
| LYNDELL CORNWELL | CURTIS BRAGAN |
| CHESTER HARDY | THEODORE HUDSON |
| MARY RUTH DEES | JACK WALKER |
| PAUL MILLIGAN | EARLIE JORDAN |
- MYRILE SLONECKER





Academy Sophomores

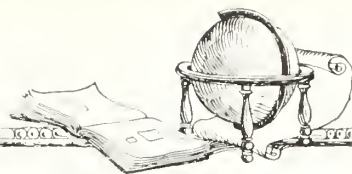
OFFICERS

- VAUGHN E. BUNTING *President*
- LOIS HARDY *Vice-President*
- ROBBIE BATES *Secretary*
- A. E. KELLEY *Treasurer*

MEMBERS

- | | |
|------------------|-------------------|
| BRENSON KELLEY | RUTH HUFFINES |
| JOE B. CANTRELL | ALICE MILLIGAN |
| MARVIN HODGE | RALPH HALLIBURTON |
| FLOYD MCKISSACK | R. J. SULLIVAN |
| ELBERT MCKISSACK | CLIFTON GALLOWAY |
| ARVAD MCKISSACK | ZARAH TEANEY |
| A. A. ROBERSON | ESTA MIMS |
| LOTTIE COCKRAN | BRESSE MARTIN |





Academy Freshmen

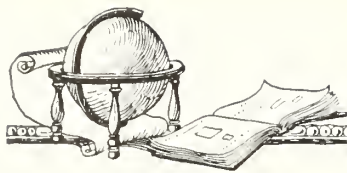
OFFICERS

SAM COLLIER *President*
 W. R. THOMPSON *Vice-President*
 EDNA MAI HARVEY *Secretary*
 EULA LOVELACE *Treasurer*
 EARL VENNUM *Sponsor*

MEMBERS

PAUL GRITTON	DUDLY BURROWS
J. B. GIBSON	HOBERT HENDRIX
PAUL THOMAS	GRACE THOMAS
J. B. ROBERTS	GRACE BOSWELL
LUELLA WALLER	PAUL BROWN
HUGH BENSON DEAN	ELIZABETH ANDERSON
PEARL SIEMM	CATHARINE ANDERSON
CLYDE BATES	THELMA IRVIN





Grades and Primary Departments

These words I am using are not original but very appropriate. They are the words of a great statesman, Daniel Webster: "If we work upon marble, it will perish; if we work upon brass, time will efface it; if we rear temples, they will crumble into dust; but if we work upon immortal souls, if we imbue them with principles with the fear of God and love of fellow-man, we engrave on those tablets something which brightens old eternity."

These are the aims of the grammar school:

1. To give children a practical, useful education.
2. To train them for efficient citizenship in our democracy.
3. To promote their health and maintain their physical strength.
4. To train them to deal justly with their fellowmen.
5. To promote their happiness through their right use of leisure.
6. To give right direction to the best methods of earning a living.
7. Above all, to lead them to God while they are young and easily influenced.

I am convinced more and more as the days go by that our greatest opportunity for reaching them is while they are in the primary and grammar grades. If we let them pass through these and fail to establish a good foundation to build on when they reach high school and college, we have lost our greatest opportunity, especially for establishing them in the Christian faith.

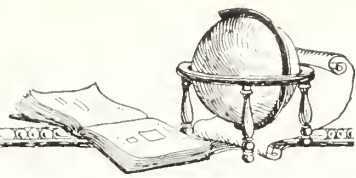
J. D. THIRASHER,
Principal Grammar Grades.





*"And Paul said: . . . as I passed by, and beheld
your devotions I found an altar with this inscription:
To the Unknown God, whom therefore ye ignorantly
worship, Him I declare unto you."*

Book III
SCHOOL OF RELIGION



Theological Graduates

MINISTERIAL GRADUATES

EZRA HENDLY

"Fear thou not for I am with thee; be not dismayed for I am thy God. I will strengthen thee, yea, I will help thee, yea, I will uphold thee with the right hand of my righteousness." Isa. 41:10.

THOMAS GARRETT

"Study to show thyself approved unto God a workman that needeth not to be ashamed, rightly dividing the word of Truth." 2 Tim. 2:15.

JOSEPH A. DIXON

"Now then we are ambassadors for Christ, as though God did beseech you by us; we pray you in Christ's stead, be ye reconciled unto God." II Cor. 5:20.

TH.B. GRADUATE

LILY SUE REDFORD Nashville, Tennessee

Assistant Librarian

"To know Lily Sue is to like her, and to like her brings the realization that you have a real friend. As actions speak louder than words, the honor roll speaks well for her subjects."

"And we know that all things work together for good to them that love God, to them who are the called according to His purpose." Romans 8:28.





College Theological Undergraduates

SUSIE ALLEN
VERA FELKAR
DURELLE SHELTON
ARNOLD KIEHN
RUBY LEE DEES
MARY I. WRIGHT
FRANK LEGGETT
OTIS LEE
VIRGINIA SAUL

OLAF HESSON
REECE METZGER
EARL VENNUM
RUBY LEE DEES
EMMA BEAUGARD
JEWEL NICHOLSON
MACK M. CALDWELL
ARABELLA BALLA
CLYDE AKINS

OPIIA HARRIS
ERNEST F. BOYER
ETHEL BURNER
FRED SOMMERS
SARA MORRISON
ERMA DUVALL
GERTRUDE THETFORD
LUELLE WALLER
RAYMOND G. GRAYSON





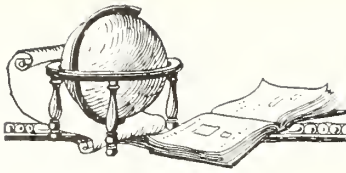
Ministerial Undergraduates

DONALD SITTS
BRENSON KELLEY
WADE JERNIGAN
EULA LOVELACE
A. E. KELLEY
VAUGHN BUNTING

FRED SOMMERS
HORACE HOWELL
ARVAD MCKISSACK
JAMES MOORE
KATHARINE WALLING
W. R. THOMPSON

RUTH HUFFINES
ROY SHEHY
ELBERT MCKISSACK
ZELMA BABER
DODSON WALLER
SUSAN H. PENN





The School of Religion



REVECCA COLLEGE lives today because its school of religion lives. It is dominated by the lofty teachings of the school of religion, and it is guided by the pure principles of the inspired Bible. In the infinite mind of the Creator the plan for such existence lay dormant until full time for it to unfold into reality. The years have hastened in their march and have brought changes in the course of events. In this enlightened twentieth century there has been ushered in a new spirit of criticism. Scepticism controls the actions and infidelity permeates the thoughts. The generation that is to succeed the passing one needs training in Christian principles. Who can doubt that Trevecca College came into being for such a purpose as this.

The purpose of the school has been to train and mold young lives in the pattern of Christianity. It not only reaches sons and daughters of our fair Southland, but it sheds a beckoning light to those of the nation and of foreign countries. The remote sections of the earth catch the gleam of its torch and all races harken to the echo of its voice. Honorable students have left the sacred halls of Trevecca to spread the news of experimental salvation to the distant climes and continents.

The instruction is of such character that it will not shake the faith of the weakest, nor fail to give stimulus to the strongest. All are welcomed to find a heaven for wholesome Christian's growth and for preparation, not only as a special worker, but as a Christian citizen. Those who have the responsibility of maturing the young folk of Trevecca are fully capable. They are equipped through experience and training to lead young lives through the channels of learning. Their lives are living examples.

Trevecca lifts high its standards and bids fair to become a greater blessing. Its banner waves above the sneers of sceptics and the reproach of critics. Long may it steer clear of that which would bring reproach on the principles of the Master Architect.

SUSIE ALLEN.





" . . . the five kings of the Amorites . . . gathered themselves together and went up, they and all their hosts, and made war against Gibeon."

Book IV
ORGANIZATIONS AND ACTIVITIES



THE DARDA STAFF





Girls' Glee Club

OFFICERS

JEWEL NICHOLSON *President*
 LORINE BUNTING *Secretary*
 EMMA LEE BROWN *Librarian*

MEMBERS

EMMA LEE BROWN
 JEWEL BROOKS
 BERTHA BRUCE
 LORINE BUNTING
 JEWEL CANNON
 LUCILE COOPER
 FRANCES COOPER
 RUBY LEE DEES
 MARY RUTH DEES
 ERMA DUVALL
 MAGGIE LOU ENGLISH
 VERA FELKER
 BERTHA GUNN
 AMANDA GUNN
 MORTIMER GARRETTE
 OPHA HARRIS
 RUTH HUFFINES



MEMBERS

ELEANORA HOLLISTER
 MARY KILGORE
 IRMA MATTHEWS
 BELETA MEGGS
 MAYLENE NABORS
 JEWEL NICHOLSON
 IVAH RAMSEY
 WILLIE MAE REDFORD
 VIRGINIA SAUL
 PERRY SMITH
 LULA MAE SMITH
 ESTELLE THETFORD
 GERTRUDE THETFORD
 LILA THRASHER
 LUELLE WALLER
 KATHERINE WALLING

QUARTETTE

HARRIS NICHOLSON
 ENGLISH BUNTING





Boys' Glee Club

OFFICERS

FLOYD MCKISSACK *President* PERCY DEAN *Secretary*
 L. D. SHELTON *Vice-President* REECE METZGER *Librarian*

MEMBERS

E. H. BOYER
 VAUGHN BUNTING
 SAMUEL COLLIER
 THOMAS DEAN
 PERCY DEAN
 JOSEPH DIXON
 MORRIS GENTRY
 HOBERT HENDRIX
 EZRA HENDLY
 CLIFTON IRWIN
 BRENTSON KELLEY
 HOWARD LANE
 FRANK LEGGETT



MEMBERS

BRESSE MARTIN
 ARVARD MCKISSACK
 FLOYD MCKISSACK
 ELBERT MCKISSACK
 REECE METZGER
 LESLIE POE
 BURT RICHARDSON
 A. A. ROBERSON
 L. D. SHELTON
 LOUIS SHINGLER
 AMOS SMITH
 KELLEY THETFORD
 W. R. THOMPSON

QUARTETTE

MCKISSACK MCKISSACK
 MCKISSACK ROBERSON





Orchestra

*"Music religious heat inspires,
It wakes the soul and lifts it high
And wings it with sublime desires
And fits it to bespeak the Deity."*



THETFORD
THETFORD

NABORS
WALLING

What Addison said of music might be applied to the orchestra of our college. Some of the best talent in Trevecca will probably be found in it.

We believe that our orchestra is consecrated to the work of God and is in harmony with the ideals of our school. The members have rendered great service in gospel work, such as playing at the jail, at street services, and various other places. It has also appeared in two public recitals at the college, as well as playing regularly at the chapel services. Some interesting radio programs are also rendered each year as part of the orchestra's varied activities.

Under the splendid leadership of the director, Miss Johnnie Jernigan, we can predict only the greatest success for this orchestra.





Parthenian Literary Society

OFFICERS

BERT RICHARDSON	<i>President</i>
REECE U. METZGER	<i>Vice-President</i>
SUE BESS JONES	<i>Secretary</i>
LESLIE C. POE	<i>Chaplain</i>
JEWEL NICHOLSON	<i>Chorist</i>
ARNOLD KIEHN	<i>Sergeant-at-Arms</i>
JOHN MIMS	<i>Sergeant-at-Arms</i>
A. B. MACKEY	<i>Critic and Parliamentarian</i>

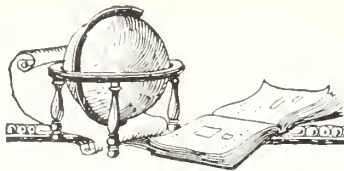
MEMBERS

PAULINE ALEXANDER
 ETHEL BURNER
 EMMA BEAUGARD
 DR. BOYER
 ARCHIE CARNEY
 MACK CALDWELL
 ERMA DUVALL
 MAMIE FOSKEY
 FRED GRAVES
 OPHA HARRIS
 MARY KILGORE
 OLAF HESSON
 OTIS LEE
 FRANK LEGGETT
 JOHN MIMS
 SARA MORRISON
 MAYLENE NABORS

LINA PARSONS
 BYRON PENNINGTON
 LULA MAE SMITH
 VIRGINIA SAUL
 AMOS SMITH
 LOUIS SHINGLER
 CLYDE AKINS
 ARABELLA BALLA
 GERTRUDE THETFORD
 KELLY THETFORD
 J. D. THRASHER
 MARY WRIGHT
 ALMA YARBOUGH
 WILBUR HUDSON
 RUBY LEE DEES
 ELLIS BURNS
 CRANFORD BURNS
 LORINE BUNTING

RUBY SHAW
 LAURA BROWN
 EMMA LEE BROWN
 EARL VENNUM
 VERA FELKER
 MAXEY BROWN
 DURELL SHELTON
 CHARLES BROWN
 SUSIE ALLEN
 ALMA W. COMPION
 CURTIS PEARSON
 IMOGENE THRASHER
 PERRY SMITH
 MAGGIE LOU ENGLISH
 LILLIAN FLOYD
 RUSSEL SMITH
 RUTH CORNWELL





Athenaeum Literary Society

OFFICERS

PERCY DEAN	<i>President</i>
SAM COLLIER	<i>Vice-President</i>
MARJORIE FITE	<i>Secretary</i>
PAUL MILLIGAN	<i>Treasurer</i>
ZARAH TEENY	<i>Sergeant-at-Arms</i>

MEMBERS

WILLIE FLATT	LOIS HARDY
ELENORA HOLLISTER	ELBERT MCKISSACK
ESTELLE THETFORD	MR. ROBERSON
CATHRINE WALLING	MR. THOMPSON
OLIVE WORDSWORTH	MR. DIXON
MORTIMER GARRETT	THEODORE HUDSON
CLIFFTON IRWIN	VAUGHN BUNTING
CURTIS GALLAWAY	RUTH KILGORE
CLYDE BATES	R. J. SULLIVAN
ROBBIE BATES	EZRA HENDLEY
MATTIE MAE BLANCETT	EDNA MAE HARVEY
THELMA IRVIN	J. B. ROBERTS
GRETCHEN WILLIAMSON	MR. SOMMERS
GRACE BOSWELL	MARY RUTH DEES
MYRTLE SLONECKER	J. B. GIBSON
LOU ELLA WALLER	JACK WALKER





Mnemosyne Literary Society

OFFICERS

- BRENISON KELLY *President*
 FLOYD MCKISSACK *Vice-President*
 IVAH RAMSEY *Recording Secretary*
 BILLYE ROGERS *Corresponding Secretary*
 BELETA MEGGS *Treasurer*
 MRS. E. D. CORNISH *Sponsor*

MEMBERS

- | | | |
|--------------------|-------------------|---------------------|
| CORDELL ALBERTSON | MORRIS GENTRY | EULA LOVELACE |
| CATHERINE ANDERSON | THOMAS DEAN | BRESSE MARTIN |
| ELIZABETH ANDERSON | PAUL GRIFTON | RUBY MAXEY |
| ZELMA BABER | RALPH HALLIBURTON | ARVARD MCKISSACK |
| CURTIS BRAGAN | HOBERT HENDRIX | ALICE MILLIGAN |
| PAUL BROWN | JEANETTE SPRINKLE | ESTA MIMS |
| J. B. CANTRELL | MARVIN HODGE | JAMES MOORE |
| LOTTIE COCHRAN | RUTH HUFFINES | SUSAN PENN |
| KATHERYN COLLIER | EARLIE JORDAN | WILIE MAE REDFORD |
| MAZELLE COPELAND | EVERETT KELLY | ROY SHEHI |
| LYNDELL CORNWELL | ANNIE PEARL LENIZ | PEARLE STEMM |
| HUGH BENSON DEAN | | GRETCHEN WILLIAMSON |



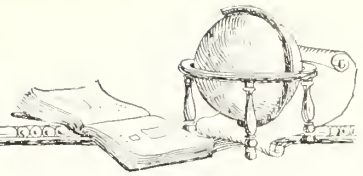


CHRISTIAN WORKERS



MISSIONARIES





An Appreciation

To the members of the Trevecca Improvement League who have spared neither time, money nor sacrifice in order that our Alma Mater might be improved, we leave this page of our annual as a token of our gratitude and appreciation.

1

Officers

MRS. C. E. HARDY *President*
MRS. R. B. DUNBAR *Vice-President*
MRS. T. E. HALE *Corresponding Secretary*
MRS. W. L. SMITH *Recording Secretary*
MRS. TIM H. MOORE *Treasurer*

MRS. N. W. MOORE
Chairman of Ways and Means Committee





Pro and Con Debating Club

OFFICERS

- THOMAS DEAN *President*
- EZRA HENDLEY *Vice-President*
- WILLIE MAE REDFORD *Secretary*
- PAUL MILLIGAN *Treasurer*

The Pro and Con Debating Club was organized by a group of Trevecca High School students with the aid of the High School principal during the school year of 1928-'29.

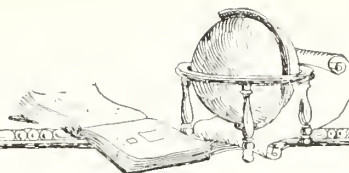
The purpose of the club is to promote interest in public speaking and debating, to cultivate ability in these subjects, to foster school pride in intellectual pursuits, and to promote fellowship and good sportsmanship among its members. The members of the club drew up a constitution by which the club was to be governed.

This club is composed of a select number (20) of high school students of Trevecca College who are able to comply with the entrance requirements and who shall be elected by two-thirds vote of the members voting at any regular meeting.

This club has already enrolled its limited number of members, and they have put on a number of interesting debates this year. We feel that the club is on the road to success and with the help of our able sponsor we expect to accomplish much through the debating club in the future.

ESTELLE THETFORD.





Trevecca Athletic Association

OFFICERS

- SAM COLLIER *President*
 CLIFTON IRWIN *Vice-President*
 CATHERINE COLLIER *Treasurer*
 WILLIE DALE FLATT *Secretary*
 FRED FLOYD *Sponsor*

MEMBERS

- | | | |
|----------------|-------------------|------------------|
| FRANK LEGGETT | CATHERINE WALLING | ESTA MIMS |
| KELLY THETFORD | MAZELLE COPELAND | MORRIS GENTRY |
| ARNOLD KIEHN | FRED SOMMERS | CLYDE BATES |
| SAM COLLIER | RALPH HALLIBURTON | J. B. GIBSON |
| BILLY IRWIN | MAYLENE NABORS | BRESSE MARTIN |
| ELLIS BURNS | JOHN MIMS | WESLEY KUTCH |
| CRANFORD BURNS | ELENORA HOLLISTER | THEODORE HUNSON |
| HARRY SAUL | LOIS HARDY | EZRA HENDLY |
| PAUL MARTIN | HOWARD LANE | CLIFTON GALLAWAY |

The Trevecca Athletic Association has been organized since 1927 and has been very successful in its many activities. Its members have set their aim to promote wholesome recreation for the boys and girls of Trevecca College, to have sports and games that will be in harmony with the spirit and ideas of the school. Good fellowship, sportsmanship, clean thoughts and habits are maintained by its members at all times.

This year the association is backing two excellent basket ball teams—the high school and the college teams. Both teams—the high school and college—have played well thus far and are looking forward to one of their best seasons.

Tennis is another of the principal sports encouraged by the school and association. Our tennis club is made up of a very enthusiastic bunch of "racketeers." The club is planning several tennis tournaments in the early spring to take place on our own courts.

As yet track has not played a very important part in our athletic activities, but in the future it is hoped that we can encourage and boost our sprinters. We have some good material and if developed we could display a crack track team.

The association is greatly encouraged by the growing enthusiasm of our student body. We believe that the Trevecca Athletic Association is not only an organization to be enjoyed by a few, but one in which every student may have a part.

CLIFTON IRWIN.





BASKETBALL TEAMS





FORDS AND CHEVROLET'S





SNAPS





L. A. BAUMAN AND SON

Men's Wear That Men Wear

2605 Broad Street

Old Hickory, Tenn.

117-19 Church Street

R. L. Patton & Son

2313 GALLATIN ROAD

Phone 3-4171-M

The Place for Good
Shoe Repairing

All Work Guaranteed

Goods Called For and Delivered

Compliments of
**NASHVILLE COAL
COMPANY**

Banner Barber Shop

C. D. ANDERSON, *Prop.*

COOLEY'S BOOK SHOP

*We Buy and Sell Second Hand
Books*

185 Eighth Ave., N.

Mr. Shehy—"I'd face death for you, dear!"
Zelma Baber—"Why didn't you face that
bulldog yesterday?"
Mr. Shehy—"He wasn't dead."

* * *

Maylene Nabors—"What would you give for
a voice like mine?"
Mazelle Copeland—"Chloroform?"

* * *

Sam Collier—"Will you shave one side of my
face for a dime?"
Barber—"Certainly, which side shall I
shave?"
Sam Collier—"The outside."

* * *

Frank Leggett—"How long can a person live
without brains?"
Professor Shute—"I don't know. How old
are you?"

* * *

Otis Lee (dreamily)—"Spring is the time for
love."
Arnold Kiehn—"Well, it's not so bad during
the other seasons either."

* * *

Mr. Metzger—"If your light, door or window
is out of order, hang it on my file."

Ezra Hendly—"What is wrong, Robert?"
Robert Yates—"I burned my hand in this hot
water."
Ezra Hendly—"Serves you right, you simp.
Why didn't you feel the water before you put
your hand into it?"

* * *

Elbert McKissack—"I've added these figures
up ten times."
Professor Cornish—"Fine! Fine!"
Elbert—"And here are the ten answers."

* * *

Clifton Irwin—"This is absolutely the worst
recitation I ever heard. I've recited at least
two-thirds of it myself."

* * *

Bert Richardson—"Why is it, Emma Lee,
that all fat people are so good-natured?"
Emma Lee—"Probably because it takes them
so long to get mad clear through."

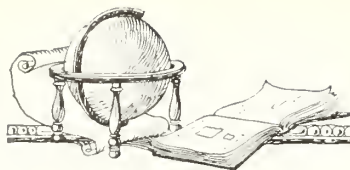
* * *

Mr. Sitts—"Is there any danger in dyeing
one's hair?"
Theodore Hudson—"I should say there is.
My uncle in Walker county did that once and
within three months he was married to a
widow with ten children."

* * *

Professor Floyd—"Mary Ruth, why are you
late?"
Mary Ruth Dees—"Class started before I got
there."





We pay cash for houses and lots in all parts of the city, either business or residence property. We also buy Real Estate Notes. See us if you wish to buy, sell, or trade. Quick, efficient, and courteous service guaranteed.

BRANSFORD REALTY CO., Inc.

LARGEST REAL ESTATE OPERATORS IN THE CITY

Capital, \$1,700,000.00

Telephone 6-5131

ENDICOTT-JOHNSON SHOE STORE

*Collegiate Footwear at
Popular Prices*

608 CHURCH STREET

NASHVILLE

NASHVILLE RAILWAY AND LIGHT COMPANY

Where 1,200 employes are striving diligently to render Faithful,
Efficient and Courteous Public Service in fulfillment
of our pledge to you.

DR. ERNEST F. BOYER

PALMER GRADUATE CHIROPRACTOR

"The Science That Gets You Well"

Call 3-3249-M

942 Strouse Avenue





LOW COST LIFE INSURANCE

A. W. McMANUS

Agent

618 Fourth and First National Bank Building

The Prudential Insurance Co. of America

Home Office, NEWARK, N. J.

Compliments of

First Nazarene Church

510 Woodland Street

REV. H. H. WISE, *Pastor*

Sunday School9:30 A.M.

Preaching.....10:45 A.M. and 7:30 P.M.

N. Y. P. S.....6:30 P.M.

Prayer Meeting...Wednesday, 7:30 P.M.

Compliments of

Robert Orr & Co.

Distributors of

**HERMITAGE BRAND
FOOD PRODUCTS**

Compliments

OF

**NASHVILLE
BANNER**

FULCHER BROS.

Electric Work

113 Fourth Avenue, North

BANNER DRY CLEANERS

L. C. ANDERSON, *Proprietor*

Ladies' Work a Specialty

Press While You Wait

EAGAN BROTHERS

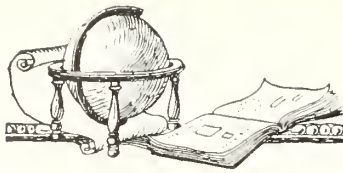
HOME OF

**FRESH MEATS, GROCERIES, SANDWICHES AND
COLD DRINKS**

PHONE 3-0868

1508 GALLATIN PIKE





J. W. McCord Optical and Jewelry Co.

CORNER FIFTH AVENUE
AND DEADERICK ST.

NASHVILLE, TENN.

Eyes
Scientifically
Examined

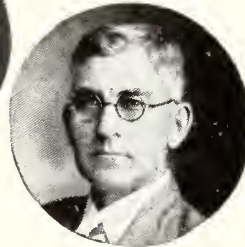


L. G. McCord



J. W. McCord

25 Years Experience



J. T. McCord

Frames
Correctly
Fitted

If not able to come to the Office, Telephone 6-0304

Oculist Prescriptions Filled

Terms If Desired

Member Nashville Academy of Optometry

WE OFFER THOROUGH, STANDARD COURSES IN
SHORTHAND, BOOKKEEPING, TYPEWRITING, BUSI-
NESS SPELLING, SECRETARIAL WORK, ETC.

NASHVILLE BUSINESS COLLEGE

225 Capitol Boulevard

NASHVILLE, TENN.

QUALITY

PURITY

EAT MORE



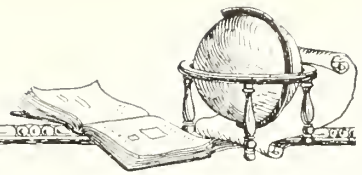
PRODUCTS

NASHVILLE PURE MILK CO.

SAFETY

SERVICE





GRACE CHURCH OF THE NAZARENE

2518 Gallatin Road
NASHVILLE, TENNESSEE

A Church
of Prayer and
Vision

*You are invited to
attend our services.*

*A hearty welcome
awaits you.*

Preaching:
10:45 A.M. and
7:30 P.M.
Midweek Prayer
Meeting
Wed. 7:30 P.M.



REV. J. E. GAAR
Pastor

*Jno. 3:7 — Marvel
not that I said unto
thee, Ye must be
born again.*

*1st Pet. 1:15-16—
But as He which
hath called you is
holy, so be ye holy
in all manner of
conversation; Be-
cause it is writ en,
Be ye holy; for I
am holy.*

W. F. M. S.

*OUR OBJECTIVE: More prayer for
a lost world—more information about
our mission fields—more funds for
their evangelization.*

SUNDAY SCHOOL

9:30 A.M.

*And these words, which I command
thee, shall be in thine heart: And
thou shall teach them diligently unto
thy children.—Deut. 6:6-7.*

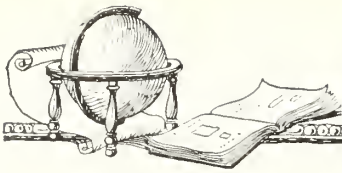
N. Y. P. S.

ALWAYS A WELCOME FOR TREVECCA STUDENTS

Good Music

Spiritual Programs





CAIN-SLOAN CO.

"Nashville's Own Department Store"

STUDENTS ARE WELCOME TO OPEN AN ACCOUNT

COMPLIMENTS OF SWEENEY FUNERAL HOME

J. H. SWEENEY, *President*

MORTICIANS

AMBULANCE SERVICE

Phone 3-0079

321 Woodland Street

MAYTAG ALUMINUM WASHER

"If It Doesn't Sell Itself, Don't Keep It"

PHONE FOR A FREE DEMONSTRATION

DIXIE MAYTAG CO.

Phone 6-6231

193 Eighth Avenue, North

MAPLEWOOD COAL CO.

KENTUCKY, TENNESSEE, AND JELICO COAL

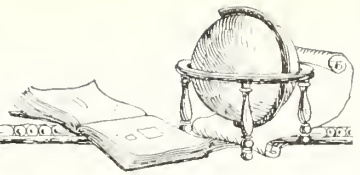
"Right Now Service"

H. L. SLONECKER, *Manager*

A. W. SLONECKER, *Sec.-Treas.*

Phone 3-3203





WOOD DRUG CO.

*Prescription
Specialist*

Where Quality and Service Prevail

Prompt Delivery Curb Service

Phones: 3-0910 and 3-9127

2513 GALLATIN ROAD

"MATRIX"

SHOES

Are worn by thousands of students
and teachers everywhere. Unequaled
for style, comfort and quality.

BELL'S BOOTERIES

504 Church Street

**Tim H. Moore
& Co.**

Fire, Automobile and Life

INSURANCE

Phone 6-4812, 3-0371

GILBERT'S
ON THE SQUARE
OUTFITTERS FOR THE FAMILY

*Quality Wearing Apparel
At Lower Prices*

Lebeck Bros.

Where a definite policy guar-
antees you the **Lowest Price** in
the city and quality maintained
at the highest level at all times.

R. H. ALLEN A. L. WHITFIELD

**Allen-Whitfield Paint
and Glass Co.**

Pratt and Lambert's Varnish
and Stains

Lowe Bros.' Products

PHONE 6-6211

407 CHURCH ST. NASHVILLE, TENN.

Phone 6-0879 *We Save You Money*

**Beesley Furniture
Company**

FURNITURE, STOVES, RANGES
RUGS

Everything for the Home

Would Be Glad to Open An Account
With You

221-223 Broadway Nashville, Tenn.

Henry McLain

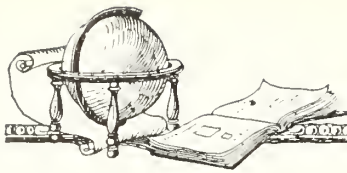
General Merchandise

We Appreciate Your Patronage

Phone 3-4171-M

2315 Gallatin Pike
NASHVILLE, TENNESSEE





W. G. THUSS

Photographer

Original "THUSS" Studio

Established 1873

217 Fifth Ave., N.

Nashville, Tennessee

EAST NASHVILLE DRY
CLEANERS

Plant: 2404 Gallatin Road

Phone 3-2896

Office: 9 South Fifth Street

Phone 3-0251

GAS— *The Cleanest, Most Reliable and
Efficient Source of Heat for—*

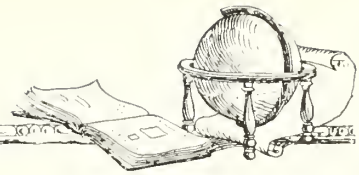
Refrigeration, Cookery, Water Heating,
Space Heating, Washing, Drying
and Ironing Clothes

Recent inventions and scientific developments in the manufacture of appliances for the utilization of gas in the service of the home now make gas just as up-to-date as radio in the many new services it performs in the household.

Gas is now the most modern agent for refrigerating food, cooking, and disposing of garbage, providing instant hot water, insuring comfortable house temperature at all seasons, and for washing, drying, and ironing clothes under home conditions of maximum cleanliness.

NASHVILLE GAS & HEATING CO.





Compliments of
N Y. P. S.
 FIRST CHURCH OF THE
 NAZARENE
*Our aim is to know Him and make
 Him known.*
 We Appreciate the Students Worship-
 ing With Us

**A. L. GOLDBERG
 & SON**
LUMBER
 139 FIFTH AVENUE, SOUTH
 Phone 6-1685

**SMART APPAREL
 EXQUISITE LINENS
 ELEGANT GIFTS
 LUNCHEONETTE**
Loveman Berger & Teitelbaum INC.
FOUNDED 1888

**WHITE TRUNK & BAG
 COMPANY**
 609 Church St. 21 Arcade

Compliments of
Bradford Furniture Mfg. Co.
 Known in Nashville Over 40 Years
 168-170 Third Avenue, North

Sole Agents for A. G. Spalding Sport ing
 Goods

 619-621 Church Street

Maxwell House Shoe Co.
 Established 1869 "The Nettleton Shop"
FINE FOOT WEAR
 Nashville, Tennessee

Phone 6-0502
 New Home
WEST PRINTING CO.
 117 Fifth Avenue, North

Compliments of
Smothermon Drug Co.
 Seymour and Gallatin Pike

Always Glad to Show You
JOHNSON & JOHNSON
 Men's and Boys' Outfitters

IN APPRECIATION
 OF BUSINESS SENT
 TO US
McEwen's Laundry
"Dependable for 49 Years"


ICE CREAM



THIS BOOK PRINTED BY BENSON



LARGEST COLLEGE ANNUAL
PUBLISHERS IN THE WORLD

HIGHEST QUALITY WORKMANSHIP
SUPERIOR EXTENSIVE SERVICE



COLLEGE ANNUAL HEADQUARTERS

Lyndell

Special 76683
LD
5356
.T75
1930
AUTHOR
TREVECCA NAZARENE COLLEGE
TITLE
The Darda

Special 76683
LD
5356
.T75
1930
c. 2

Trevecca Nazarene College
The Darda

